



CEP135 Polyclonal Antibody

Catalog No	BYab-03756
Isotype	IgG
Reactivity	Human;Mouse
Applications	WB;IHC;IF;ELISA
Gene Name	CEP135
Protein Name	Centrosomal protein of 135 kDa
Immunogen	The antiserum was produced against synthesized peptide derived from human CEP135. AA range:1081-1130
Specificity	CEP135 Polyclonal Antibody detects endogenous levels of CEP135 protein.
Formulation	Liquid in PBS containing 50% glycerol, 0.5% BSA and 0.02% sodium azide.
Source	Polyclonal, Rabbit,IgG
Purification	The antibody was affinity-purified from rabbit antiserum by affinity-chromatography using epitope-specific immunogen.
Dilution	WB: 1/500 - 1/2000. IHC: 1/100 - 1/300. ELISA: 1/40000.. IF 1:50-200
Concentration	1 mg/ml
Purity	≥90%
Storage Stability	-20°C/1 year
Synonyms	CEP135; CEP4; KIAA0635; Centrosomal protein of 135 kDa; Cep135; Centrosomal protein 4
Observed Band	134kD
Cell Pathway	Cytoplasm, cytoskeleton, microtubule organizing center, centrosome, centriole . During centriole biogenesis, it is concentrated within the proximal lumen of both parental centrioles and procentrioles.
Tissue Specificity	Brain,Epithelium,Placenta,
Function	similarity:Belongs to the CEP135/TSGA10 family.,
Background	centrosomal protein 135(CEP135) Homo sapiens This gene encodes a centrosomal protein, which acts as a scaffolding protein during early centriole biogenesis, and is also required for centriole-centriole cohesion during interphase. Mutations in this gene are associated with autosomal recessive primary microcephaly-8. [provided by RefSeq, Jun 2012],

Nanjing BYabscience technology Co.,Ltd



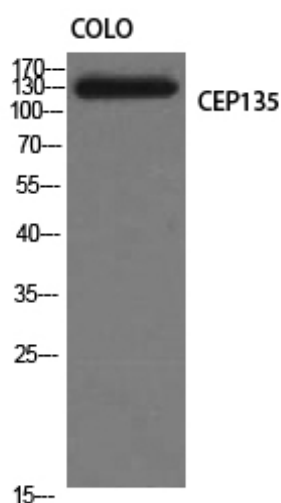
matters needing attention

Avoid repeated freezing and thawing!

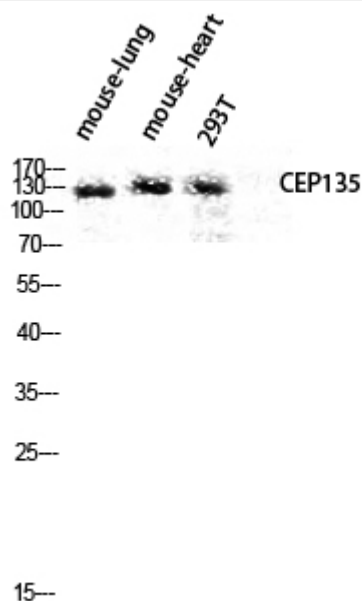
Usage suggestions

This product can be used in immunological reaction related experiments. For more information, please consult technical personnel.

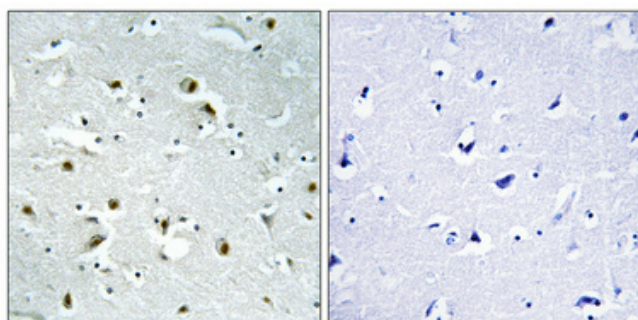
Products Images



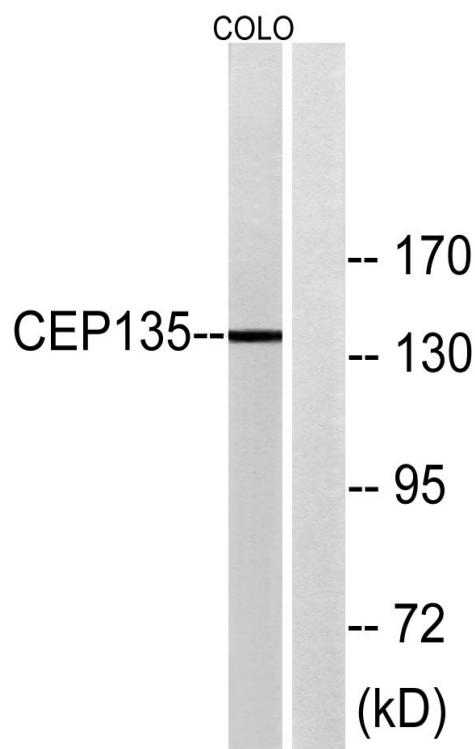
Western Blot analysis of COLO cells using CEP135 Polyclonal Antibody diluted at 1:1000



Western blot analysis of mouse-lung mouse-heart 293T lysis using CEP135 antibody. Antibody was diluted at 1:1000



Immunohistochemical analysis of paraffin-embedded Human brain. Antibody was diluted at 1:100(4° overnight). High-pressure and temperature Tris-EDTA,pH8.0 was used for antigen retrieval. Negative contrl (right) obtained from antibody was pre-absorbed by immunogen peptide.



Western blot analysis of lysates from COLO cells, using CEP135 Antibody. The lane on the right is blocked with the synthesized peptide.