



# CEP350 Polyclonal Antibody

<b>Catalog No</b>	BYab-03760
<b>Isotype</b>	IgG
<b>Reactivity</b>	Human;Rat;Mouse;
<b>Applications</b>	IHC;IF;ELISA
<b>Gene Name</b>	CEP350
<b>Protein Name</b>	Centrosome-associated protein 350
<b>Immunogen</b>	The antiserum was produced against synthesized peptide derived from human CEP35. AA range:671-720
<b>Specificity</b>	CEP350 Polyclonal Antibody detects endogenous levels of CEP350 protein.
<b>Formulation</b>	Liquid in PBS containing 50% glycerol, 0.5% BSA and 0.02% sodium azide.
<b>Source</b>	Polyclonal, Rabbit,IgG
<b>Purification</b>	The antibody was affinity-purified from rabbit antiserum by affinity-chromatography using epitope-specific immunogen.
<b>Dilution</b>	IHC: 1/100 - 1/300. ELISA: 1/40000.. IF 1:50-200
<b>Concentration</b>	1 mg/ml
<b>Purity</b>	≥90%
<b>Storage Stability</b>	-20°C/1 year
<b>Synonyms</b>	CEP350; CAP350; KIAA0480; GM133; Centrosome-associated protein 350; Cep350; Centrosome-associated protein of 350 kDa
<b>Observed Band</b>	
<b>Cell Pathway</b>	Cytoplasm, cytoskeleton, microtubule organizing center, centrosome . Cytoplasm, cytoskeleton, spindle . Nucleus . Cytoplasm, cytoskeleton, microtubule organizing center, centrosome, centriole . Cytoplasm, cytoskeleton, cilium basal body . Associated with mitotic spindles (PubMed:16314388). Nuclear, in discrete foci. Associated with intermediate filaments (PubMed:15615782). Also present in the pericentrosomal area (PubMed:17878239). Localizes on both mother and daughter centrioles. Localizes to an axial position on the mother centriole (PubMed:28625565). Localizes to the distal end of the centriole on the subdistal appendage region (PubMed:28659385). .
<b>Tissue Specificity</b>	Detected in heart, brain, skeletal muscle, testis, placenta, lung, liver, kidney and pancreas.
<b>Function</b>	function:Required for anchoring microtubules to the centrosomes. Required for the integrity of the microtubule network. Recruits PPARA to discrete subcellular compartments and thereby modulates PPARA activity.,PTM:Phosphorylated

**Nanjing BYabscience technology Co.,Ltd**



during mitosis.,similarity:Contains 1 CAP-Gly domain.,subcellular location:Associated with mitotic spindles. Nuclear, in discrete foci. Associated with intermediate filaments.,subunit:Part of a ternary complex that contains CEP350, FGFR1OP and MAPRE1. Interacts directly with FGFR1OP via its C-terminus. Interacts with NR1H3, PPARA, PPARD and PPARG.,tissue specificity:Detected in heart, brain, skeletal muscle, testis, placenta, lung, liver, kidney and pancreas.,

#### Background

centrosomal protein 350(CEP350) Homo sapiens The product of this gene is a large protein with a CAP-Gly domain typically found in cytoskeleton-associated proteins. The encoded protein primarily localizes to the centrosome, a non-membraneous organelle that functions as the major microtubule-organizing center in animal cells. The encoded protein directly interacts with another large centrosomal protein and is required to anchor microtubules at the centrosome. It is also implicated in the regulation of a class of nuclear hormone receptors in the nucleus. Several alternatively spliced transcript variants have been found, but their full-length nature has not been determined. [provided by RefSeq, Jul 2008],

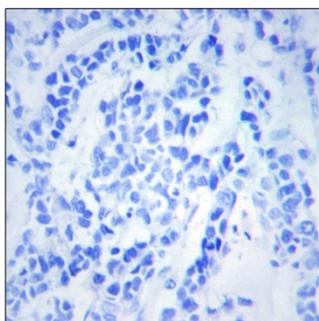
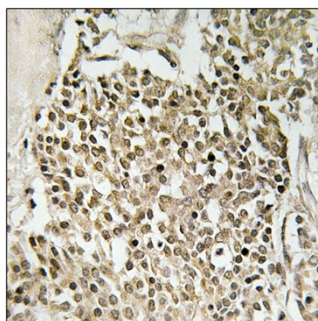
#### matters needing attention

Avoid repeated freezing and thawing!

#### Usage suggestions

This product can be used in immunological reaction related experiments. For more information, please consult technical personnel.

### Products Images



Immunohistochemistry analysis of paraffin-embedded human breast carcinoma, using CEP350 Antibody. The picture on the right is blocked with the synthesized peptide.