



# CEP76 Polyclonal Antibody

<b>Catalog No</b>	BYab-03765
<b>Isotype</b>	IgG
<b>Reactivity</b>	Human;Mouse
<b>Applications</b>	WB;IHC;IF;ELISA
<b>Gene Name</b>	CEP76
<b>Protein Name</b>	Centrosomal protein of 76 kDa
<b>Immunogen</b>	The antiserum was produced against synthesized peptide derived from human CEP76. AA range:251-300
<b>Specificity</b>	CEP76 Polyclonal Antibody detects endogenous levels of CEP76 protein.
<b>Formulation</b>	Liquid in PBS containing 50% glycerol, 0.5% BSA and 0.02% sodium azide.
<b>Source</b>	Polyclonal, Rabbit,IgG
<b>Purification</b>	The antibody was affinity-purified from rabbit antiserum by affinity-chromatography using epitope-specific immunogen.
<b>Dilution</b>	WB: 1/500 - 1/2000. IHC: 1/100 - 1/300. ELISA: 1/10000.. IF 1:50-200
<b>Concentration</b>	1 mg/ml
<b>Purity</b>	≥90%
<b>Storage Stability</b>	-20°C/1 year
<b>Synonyms</b>	CEP76; C18orf9; Centrosomal protein of 76 kDa; Cep76
<b>Observed Band</b>	74kD
<b>Cell Pathway</b>	Cytoplasm, cytoskeleton, microtubule organizing center, centrosome . Cytoplasm, cytoskeleton, microtubule organizing center, centrosome, centriole. Does not localize along the ciliary axoneme.
<b>Tissue Specificity</b>	Brain,Stomach,Teratocarcinoma,
<b>Function</b>	regulation of cell cycle process, regulation of centrosome duplication, regulation of microtubule-based process,regulation of organelle organization, regulation of centriole replication, regulation of centrosome cycle, regulation of cytoskeleton organization, regulation of cell cycle, regulation of microtubule cytoskeleton organization,
<b>Background</b>	This gene encodes a centrosomal protein which regulates centriole amplification by limiting centriole duplication to once per cell cycle. Alternative splicing results in multiple transcript variants. [provided by RefSeq, Dec 2012],

**Nanjing BYabscience technology Co.,Ltd**

网址: [www.njbybio.com](http://www.njbybio.com)

官方热线: 025-5229-8998

监督电话: 15950492658



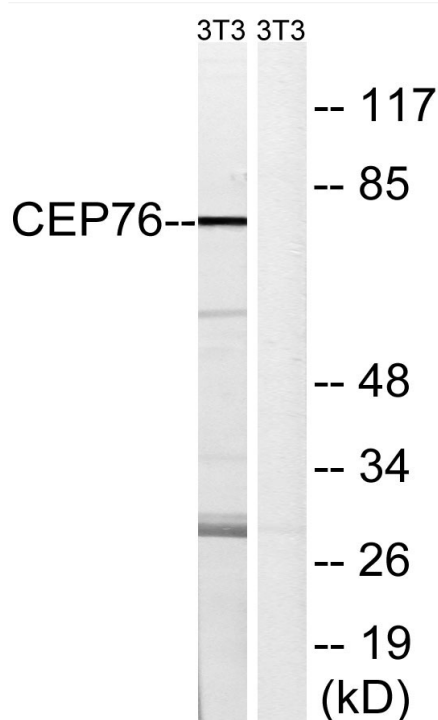
**matters needing attention**

Avoid repeated freezing and thawing!

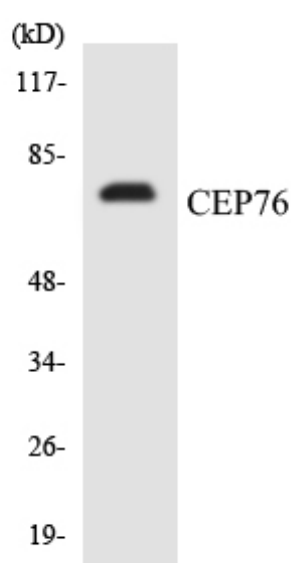
**Usage suggestions**

This product can be used in immunological reaction related experiments. For more information, please consult technical personnel.

**Products Images**

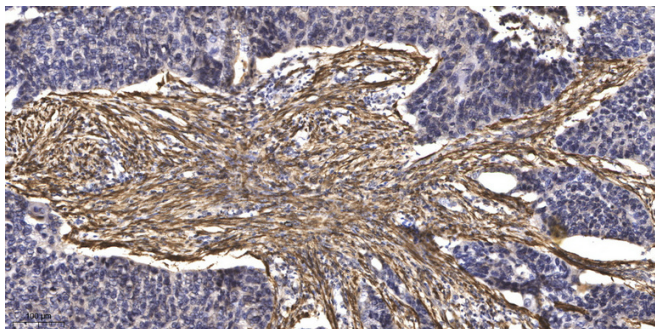


Western blot analysis of lysates from NIH/3T3 cells, using CEP76 Antibody. The lane on the right is blocked with the synthesized peptide.



Western blot analysis of the lysates from HT-29 cells using CEP76 antibody.

**Nanjing BYabscience technology Co.,Ltd**



Immunohistochemical analysis of paraffin-embedded human Squamous cell carcinoma of lung. 1, Antibody was diluted at 1:200(4° overnight). 2, Tris-EDTA,pH9.0 was used for antigen retrieval. 3,Secondary antibody was diluted at 1:200(room temperature, 45min).