



# CEP78 Polyclonal Antibody

<b>Catalog No</b>	BYab-03766
<b>Isotype</b>	IgG
<b>Reactivity</b>	Human;Mouse
<b>Applications</b>	WB;IHC;IF;ELISA
<b>Gene Name</b>	CEP78
<b>Protein Name</b>	Centrosomal protein of 78 kDa
<b>Immunogen</b>	The antiserum was produced against synthesized peptide derived from human CEP78. AA range:301-350
<b>Specificity</b>	CEP78 Polyclonal Antibody detects endogenous levels of CEP78 protein.
<b>Formulation</b>	Liquid in PBS containing 50% glycerol, 0.5% BSA and 0.02% sodium azide.
<b>Source</b>	Polyclonal, Rabbit,IgG
<b>Purification</b>	The antibody was affinity-purified from rabbit antiserum by affinity-chromatography using epitope-specific immunogen.
<b>Dilution</b>	WB: 1/500 - 1/2000. IHC: 1/100 - 1/300. ELISA: 1/20000.. IF 1:50-200
<b>Concentration</b>	1 mg/ml
<b>Purity</b>	≥90%
<b>Storage Stability</b>	-20°C/1 year
<b>Synonyms</b>	CEP78; C9orf81; Centrosomal protein of 78 kDa; Cep78
<b>Observed Band</b>	80kD
<b>Cell Pathway</b>	Cytoplasm, cytoskeleton, microtubule organizing center, centrosome . Cytoplasm, cytoskeleton, microtubule organizing center, centrosome, centriole . Cytoplasm, cytoskeleton, cilium basal body . Mainly localizes at the centriolar wall, but also found in the pericentriolar material (PubMed:27246242). Expressed in photoreceptor inner segment (PubMed:27588452). .
<b>Tissue Specificity</b>	Widely expressed (PubMed:27588451, PubMed:27588452). Expressed in different retinal cell types with higher expression in cone compared to rod cells (at protein level) (PubMed:27588452).
<b>Function</b>	similarity:Belongs to the CEP78 family.,similarity:Contains 3 LRR (leucine-rich) repeats.,
<b>Background</b>	similarity:Belongs to the CEP78 family.,similarity:Contains 3 LRR (leucine-rich) repeats.,

**Nanjing BYabscience technology Co.,Ltd**

网址: [www.njbybio.com](http://www.njbybio.com)

官方热线: 025-5229-8998

监督电话: 15950492658



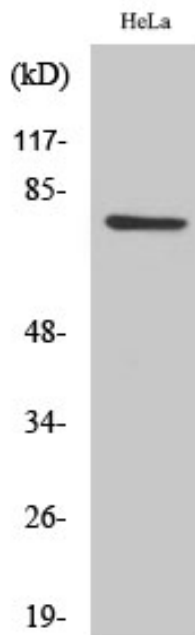
**matters needing attention**

Avoid repeated freezing and thawing!

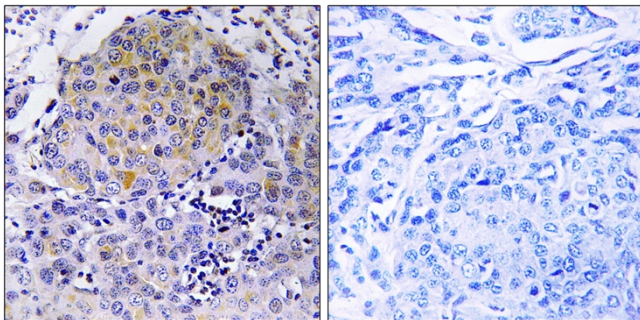
**Usage suggestions**

This product can be used in immunological reaction related experiments. For more information, please consult technical personnel.

**Products Images**



Western Blot analysis of various cells using CEP78 Polyclonal Antibody



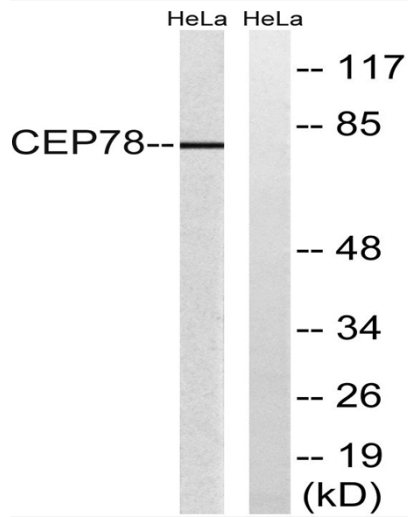
Immunohistochemistry analysis of paraffin-embedded human breast carcinoma tissue, using CEP78 Antibody. The picture on the right is blocked with the synthesized peptide.

**Nanjing BYabs science technology Co.,Ltd**

网址: [www.njbybio.com](http://www.njbybio.com)

官方热线: 025-5229-8998

监督电话: 15950492658



Western blot analysis of lysates from HeLa cells, using CEP78 Antibody. The lane on the right is blocked with the synthesized peptide.