



# CPA5 Polyclonal Antibody

<b>Catalog No</b>	BYab-03784
<b>Isotype</b>	IgG
<b>Reactivity</b>	Human;Mouse
<b>Applications</b>	WB;ELISA
<b>Gene Name</b>	CPA5
<b>Protein Name</b>	Carboxypeptidase A5
<b>Immunogen</b>	The antiserum was produced against synthesized peptide derived from human CPA5. AA range:91-140
<b>Specificity</b>	CPA5 Polyclonal Antibody detects endogenous levels of CPA5 protein.
<b>Formulation</b>	Liquid in PBS containing 50% glycerol, 0.5% BSA and 0.02% sodium azide.
<b>Source</b>	Polyclonal, Rabbit,IgG
<b>Purification</b>	The antibody was affinity-purified from rabbit antiserum by affinity-chromatography using epitope-specific immunogen.
<b>Dilution</b>	Western Blot: 1/500 - 1/2000. ELISA: 1/20000. Not yet tested in other applications.
<b>Concentration</b>	1 mg/ml
<b>Purity</b>	≥90%
<b>Storage Stability</b>	-20°C/1 year
<b>Synonyms</b>	CPA5; Carboxypeptidase A5
<b>Observed Band</b>	50kD
<b>Cell Pathway</b>	Secreted .
<b>Tissue Specificity</b>	Expression is very low or not detectable.
<b>Function</b>	catalytic activity:Release of a C-terminal amino acid, but little or no action with -Asp, -Glu, -Arg, -Lys or -Pro.,cofactor:Binds 1 zinc ion per subunit.,similarity:Belongs to the peptidase M14 family.,tissue specificity:Expression is very low or not detectable.,
<b>Background</b>	Carboxypeptidases have functions ranging from digestion of food to selective biosynthesis of neuroendocrine peptides. Members of the A/B subfamily of carboxypeptidases, such as CPA5, contain an approximately 90-amino acid pro region that assists in the folding of the active carboxypeptidase domain. Cleavage of the pro region activates the enzyme (Wei et al., 2002 [PubMed 11836249]).[supplied by OMIM, Mar 2008],

**Nanjing BYabscience technology Co.,Ltd**



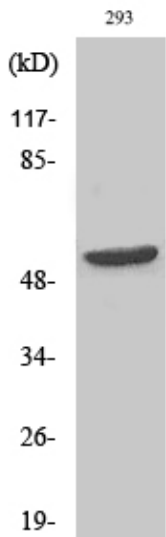
**matters needing attention**

Avoid repeated freezing and thawing!

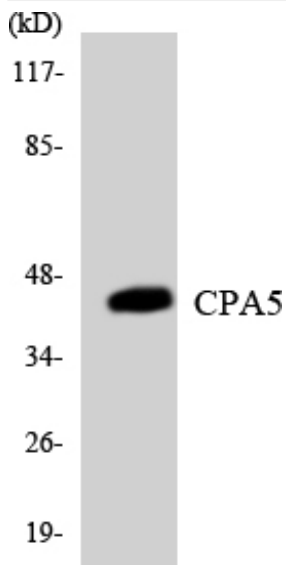
**Usage suggestions**

This product can be used in immunological reaction related experiments. For more information, please consult technical personnel.

**Products Images**



Western Blot analysis of various cells using CPA5 Polyclonal Antibody



Western blot analysis of the lysates from COLO205 cells using CPA5 antibody.