



CPTI-M Polyclonal Antibody

Catalog No	BYab-03790
Isotype	IgG
Reactivity	Human;Rat;Mouse;
Applications	WB;IHC;IF;ELISA
Gene Name	CPT1B
Protein Name	Carnitine O-palmitoyltransferase 1 muscle isoform
Immunogen	The antiserum was produced against synthesized peptide derived from human CPT1B. AA range:401-450
Specificity	CPTI-M Polyclonal Antibody detects endogenous levels of CPTI-M protein.
Formulation	Liquid in PBS containing 50% glycerol, 0.5% BSA and 0.02% sodium azide.
Source	Polyclonal, Rabbit,IgG
Purification	The antibody was affinity-purified from rabbit antiserum by affinity-chromatography using epitope-specific immunogen.
Dilution	WB: 1/500 - 1/2000. IHC: 1/100 - 1/300. ELISA: 1/40000.. IF 1:50-200
Concentration	1 mg/ml
Purity	≥90%
Storage Stability	-20°C/1 year
Synonyms	CPT1B; KIAA1670; Carnitine O-palmitoyltransferase 1; muscle isoform; CPT1-M; Carnitine O-palmitoyltransferase I, muscle isoform; CPT I; CPTI-M; Carnitine palmitoyltransferase 1B; Carnitine palmitoyltransferase I-like protein
Observed Band	88kD
Cell Pathway	Mitochondrion outer membrane ; Multi-pass membrane protein .
Tissue Specificity	Strong expression in heart and skeletal muscle. No expression in liver and kidney.
Function	catalytic activity:ATP + choline = ADP + O-phosphocholine.,catalytic activity:ATP + ethanolamine = ADP + O-phosphoethanolamine.,catalytic activity:Palmitoyl-CoA + L-carnitine = CoA + L-palmitoylcarnitine.,miscellaneous:This protein is produced by a bicistronic gene which also produces the CHKB protein from a non-overlapping reading frame.,miscellaneous:This protein is produced by a bicistronic gene which also produces the CPT1B protein from a non-overlapping reading frame.,pathway:Lipid metabolism; fatty acid beta-oxidation.,similarity:Belongs to the carnitine/choline acetyltransferase family.,similarity:Belongs to the

Nanjing BYabs science technology Co.,Ltd



choline/ethanolamine kinase family.,tissue specificity:Strong expression in heart and skeletal muscle. No expression in liver and kidney.,

Background

The protein encoded by this gene, a member of the carnitine/choline acetyltransferase family, is the rate-controlling enzyme of the long-chain fatty acid beta-oxidation pathway in muscle mitochondria. This enzyme is required for the net transport of long-chain fatty acyl-CoAs from the cytoplasm into the mitochondria. Multiple transcript variants encoding different isoforms have been found for this gene, and read-through transcripts are expressed from the upstream locus that include exons from this gene. [provided by RefSeq, Jun 2009],

matters needing attention

Avoid repeated freezing and thawing!

Usage suggestions

This product can be used in immunological reaction related experiments. For more information, please consult technical personnel.

Nanjing BYabscience technology Co.,Ltd

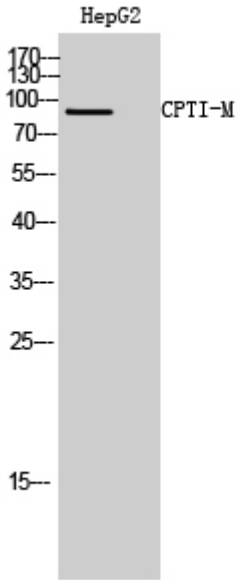
网址: www.njbybio.com

官方热线: 025-5229-8998

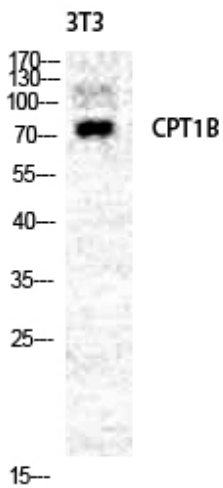
监督电话: 15950492658



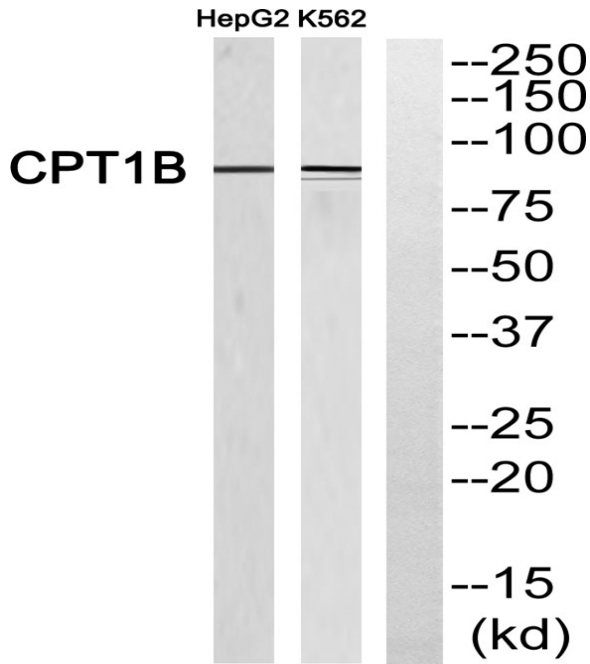
Products Images



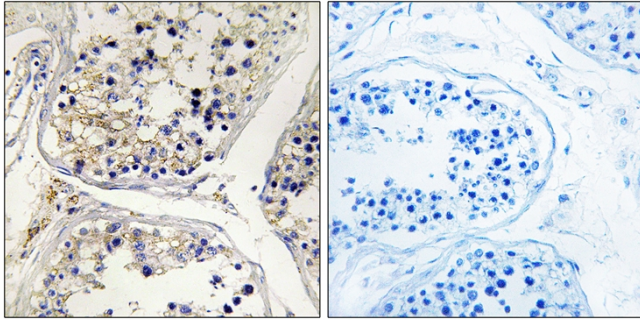
Western Blot analysis of HepG2 cells using CPTI-M Polyclonal Antibody diluted at 1:2000



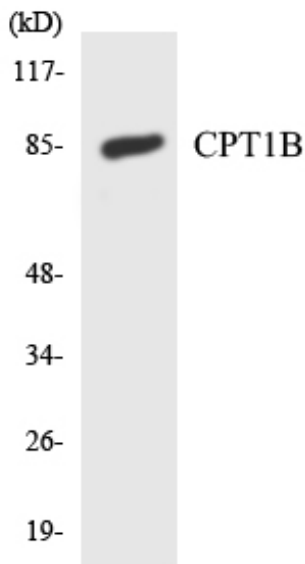
Western Blot analysis of NIH-3T3 cells using CPTI-M Polyclonal Antibody diluted at 1:2000



Western blot analysis of CPT1B Antibody. The lane on the right is blocked with the CPT1B peptide.



Immunohistochemistry analysis of paraffin-embedded human testis, using CPT1B Antibody. The lane on the right is blocked with the CPT1B peptide.



Western blot analysis of the lysates from HepG2 cells using CPT1B antibody.