



Cyclophilin F Polyclonal Antibody

Catalog No	BYab-03800
Isotype	IgG
Reactivity	Human;Mouse;Rat
Applications	WB;IHC;IF;ELISA
Gene Name	PPIF
Protein Name	Peptidyl-prolyl cis-trans isomerase F mitochondrial
Immunogen	The antiserum was produced against synthesized peptide derived from human PPIF. AA range:86-135
Specificity	Cyclophilin F Polyclonal Antibody detects endogenous levels of Cyclophilin F protein.
Formulation	Liquid in PBS containing 50% glycerol, 0.5% BSA and 0.02% sodium azide.
Source	Polyclonal, Rabbit,IgG
Purification	The antibody was affinity-purified from rabbit antiserum by affinity-chromatography using epitope-specific immunogen.
Dilution	Western Blot: 1/500 - 1/2000. Immunohistochemistry: 1/100 - 1/300. Immunofluorescence: 1/200 - 1/1000. ELISA: 1/20000. Not yet tested in other applications.
Concentration	1 mg/ml
Purity	≥90%
Storage Stability	-20°C/1 year
Synonyms	PPIF; CYP3; Peptidyl-prolyl cis-trans isomerase F; mitochondrial; PPlase F; Cyclophilin F; Rotamase F
Observed Band	22kD
Cell Pathway	Mitochondrion matrix .
Tissue Specificity	Blood,Cord blood,Ovary,
Function	catalytic activity:Peptidylproline (omega=180) = peptidylproline (omega=0).,function:PPlases accelerate the folding of proteins.,function:PPlases accelerate the folding of proteins. It catalyzes the cis-trans isomerization of proline imidic peptide bonds in oligopeptides.,similarity:Belongs to the cyclophilin-type PPlase family.,similarity:Contains 1 PPlase cyclophilin-type domain.,
Background	The protein encoded by this gene is a member of the peptidyl-prolyl cis-trans isomerase (PPlase) family. PPlases catalyze the cis-trans isomerization of proline imidic peptide bonds in oligopeptides and accelerate the folding of proteins. This

Nanjing BYabs science technology Co.,Ltd



protein is part of the mitochondrial permeability transition pore in the inner mitochondrial membrane. Activation of this pore is thought to be involved in the induction of apoptotic and necrotic cell death. [provided by RefSeq, Jul 2008],

matters needing attention

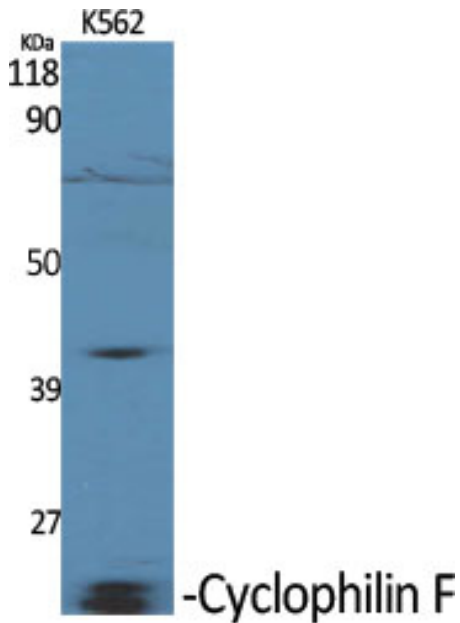
Avoid repeated freezing and thawing!

Usage suggestions

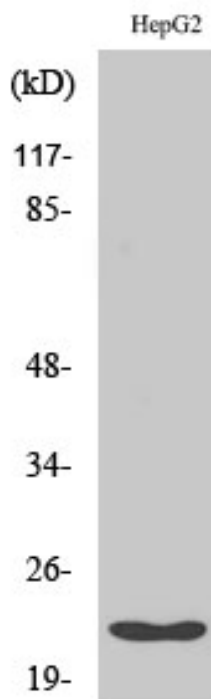
This product can be used in immunological reaction related experiments. For more information, please consult technical personnel.



Products Images



Western Blot analysis of various cells using Cyclophilin F Polyclonal Antibody diluted at 1:2000



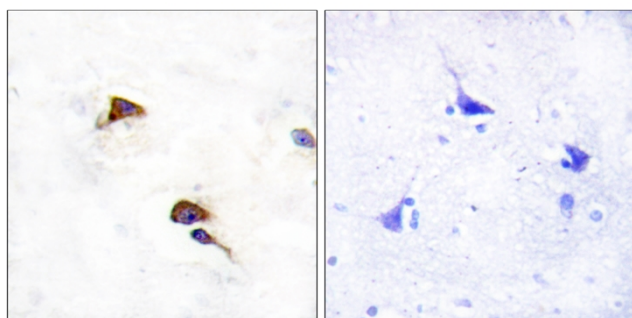
Western Blot analysis of HuvEc cells using Cyclophilin F Polyclonal Antibody diluted at 1:2000

Nanjing BYabs science technology Co.,Ltd

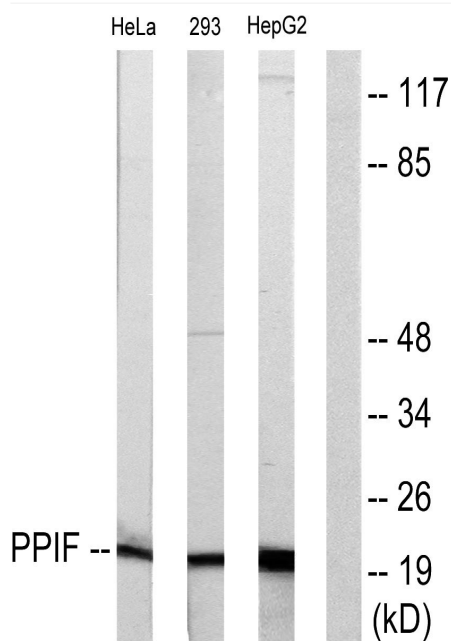
网址: www.njbybio.com

官方热线: 025-5229-8998

监督电话: 15950492658



Immunohistochemistry analysis of paraffin-embedded human brain tissue, using PPIF Antibody. The picture on the right is blocked with the synthesized peptide.



Western blot analysis of lysates from HepG2, HeLa, and 293 cells, using PPIF Antibody. The lane on the right is blocked with the synthesized peptide.