



Dok-6 Polyclonal Antibody

Catalog No	BYab-03825
Isotype	IgG
Reactivity	Human;Mouse
Applications	WB;IHC;IF;ELISA
Gene Name	DOK6
Protein Name	Docking protein 6
Immunogen	The antiserum was produced against synthesized peptide derived from human DOK6. AA range:111-160
Specificity	Dok-6 Polyclonal Antibody detects endogenous levels of Dok-6 protein.
Formulation	Liquid in PBS containing 50% glycerol, 0.5% BSA and 0.02% sodium azide.
Source	Polyclonal, Rabbit,IgG
Purification	The antibody was affinity-purified from rabbit antiserum by affinity-chromatography using epitope-specific immunogen.
Dilution	Western Blot: 1/500 - 1/2000. Immunohistochemistry: 1/100 - 1/300. Immunofluorescence: 1/200 - 1/1000. ELISA: 1/10000. Not yet tested in other applications.
Concentration	1 mg/ml
Purity	≥90%
Storage Stability	-20°C/1 year
Synonyms	DOK6; DOK5L; Docking protein 6; Downstream of tyrosine kinase 6
Observed Band	43kD
Cell Pathway	
Tissue Specificity	Highly expressed in fetal and adult brain. Highly expressed in the cerebellum. Weak expression in kidney, spinal cord and testis.
Function	domain:PTB domain mediates receptor interaction.,function:DOK proteins are enzymatically inert adaptor or scaffolding proteins. They provide a docking platform for the assembly of multimolecular signaling complexes. DOK6 promotes Ret-mediated neurite growth. May have a role in brain development and/or maintenance.,PTM:On Ret activation, phosphorylated on one or more C-terminal tyrosine residues by an Src family kinase.,similarity:Belongs to the DOK family. Type B subfamily.,similarity:Contains 1 IRS-type PTB domain.,similarity:Contains 1 PH domain.,subunit:Interacts via its PTB domain with phosphorylated RET.,tissue specificity:Highly expressed in fetal and adult brain. Highly expressed in the cerebellum. Weak expression in kidney, spinal cord and testis.,

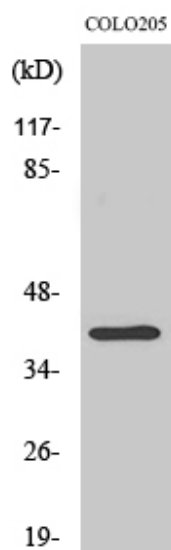
Nanjing BYabscience technology Co.,Ltd



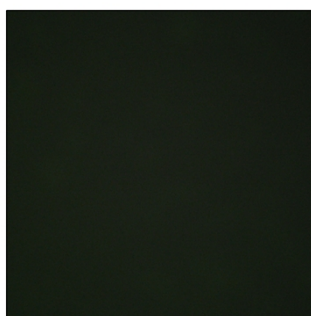
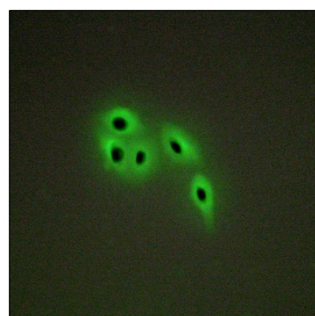
Background	docking protein 6(DOK6) Homo sapiens DOK6 is a member of the DOK (see DOK1; MIM 602919) family of intracellular adaptors that play a role in the RET (MIM 164761) signaling cascade (Crowder et al., 2004 [PubMed 15286081]).[supplied by OMIM, Mar 2008],
matters needing attention	Avoid repeated freezing and thawing!
Usage suggestions	This product can be used in immunological reaction related experiments. For more information, please consult technical personnel.



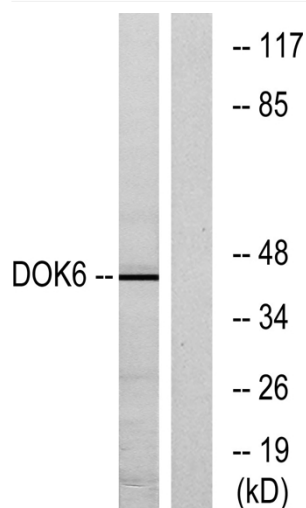
Products Images



Western Blot analysis of various cells using Dok-6 Polyclonal Antibody



Immunofluorescence analysis of A549 cells, using DOK6 Antibody. The picture on the right is blocked with the synthesized peptide.



Western blot analysis of lysates from COLO cells, using DOK6 Antibody. The lane on the right is blocked with the synthesized peptide.

Nanjing BYabs science technology Co.,Ltd

网址: www.njbybio.com

官方热线: 025-5229-8998

监督电话: 15950492658



Immunohistochemical analysis of paraffin-embedded human tonsil. 1, Antibody was diluted at 1:200(4° overnight). 2, Tris-EDTA,pH9.0 was used for antigen retrieval. 3,Secondary antibody was diluted at 1:200(room temperature, 30min).