



eIF1AY Polyclonal Antibody

Catalog No	BYab-03835
Isotype	IgG
Reactivity	Human;Mouse;Rat
Applications	IHC;IF;ELISA
Gene Name	EIF1AY
Protein Name	Eukaryotic translation initiation factor 1A Y-chromosomal
Immunogen	The antiserum was produced against synthesized peptide derived from human EIF1AY. AA range:21-70
Specificity	eIF1AY Polyclonal Antibody detects endogenous levels of eIF1AY protein.
Formulation	Liquid in PBS containing 50% glycerol, 0.5% BSA and 0.02% sodium azide.
Source	Polyclonal, Rabbit,IgG
Purification	The antibody was affinity-purified from rabbit antiserum by affinity-chromatography using epitope-specific immunogen.
Dilution	IHC: 1/100 - 1/300. ELISA: 1/40000.. IF 1:50-200
Concentration	1 mg/ml
Purity	≥90%
Storage Stability	-20°C/1 year
Synonyms	EIF1AY; Eukaryotic translation initiation factor 1A; Y-chromosomal; eIF-1A Y isoform; Eukaryotic translation initiation factor 4C; eIF-4C
Observed Band	
Cell Pathway	
Tissue Specificity	Ubiquitous.
Function	function:Seems to be required for maximal rate of protein biosynthesis. Enhances ribosome dissociation into subunits and stabilizes the binding of the initiator Met-tRNA(I) to 40 S ribosomal subunits.,similarity:Belongs to the eIF-1A family.,similarity:Contains 1 S1-like domain.,tissue specificity:Ubiquitous.,
Background	This gene is located on the non-recombining region of the Y chromosome. It encodes a protein related to eukaryotic translation initiation factor 1A (EIF1A), which may function in stabilizing the binding of the initiator Met-tRNA to 40S ribosomal subunits. Alternative splicing results in multiple transcript variants. [provided by RefSeq, Jul 2013],

Nanjing BYabs science technology Co.,Ltd



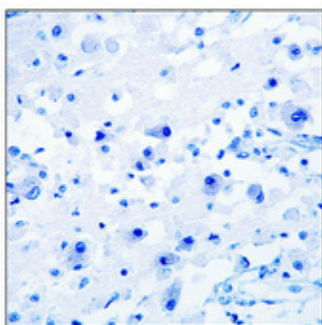
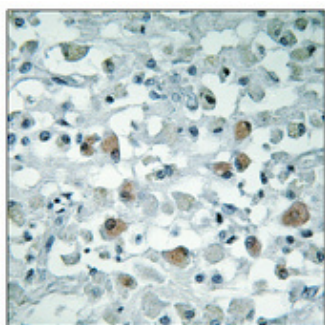
matters needing attention

Avoid repeated freezing and thawing!

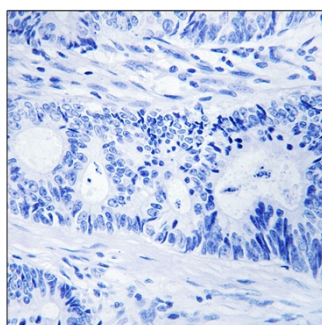
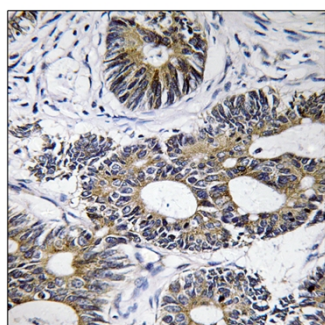
Usage suggestions

This product can be used in immunological reaction related experiments. For more information, please consult technical personnel.

Products Images



Immunohistochemical analysis of paraffin-embedded Human brain. Antibody was diluted at 1:100(4° overnight). High-pressure and temperature Tris-EDTA,pH8.0 was used for antigen retrieval. Negative contrl (right) obtained from antibody was pre-absorbed by immunogen peptide.



Immunohistochemistry analysis of paraffin-embedded human colon carcinoma tissue, using EIF1AY Antibody. The picture on the right is blocked with the synthesized peptide.