



Gads Polyclonal Antibody

Catalog No	BYab-03886
Isotype	IgG
Reactivity	Human;Rat;Mouse;
Applications	WB;ELISA
Gene Name	GRAP2
Protein Name	GRB2-related adapter protein 2
Immunogen	The antiserum was produced against synthesized peptide derived from human GRAP2. AA range:121-170
Specificity	Gads Polyclonal Antibody detects endogenous levels of Gads protein.
Formulation	Liquid in PBS containing 50% glycerol, 0.5% BSA and 0.02% sodium azide.
Source	Polyclonal, Rabbit,IgG
Purification	The antibody was affinity-purified from rabbit antiserum by affinity-chromatography using epitope-specific immunogen.
Dilution	Western Blot: 1/500 - 1/2000. ELISA: 1/40000. Not yet tested in other applications.
Concentration	1 mg/ml
Purity	≥90%
Storage Stability	-20°C/1 year
Synonyms	GRAP2; GADS; GRB2L; GRID; GRB2-related adapter protein 2; Adapter protein GRID; GRB-2-like protein; GRB2L; GRBLG; GRBX; Grf40 adapter protein; Grf-40; Growth factor receptor-binding protein; Hematopoietic cell-associated adapter protein Grp
Observed Band	38kD
Cell Pathway	Nucleus . Cytoplasm . Endosome .
Tissue Specificity	Blood,Lung,Platelet,Spleen,T-cell,Thymus,
Function	function:Interacts with SLP-76 to regulate NF-AT activation. Binds to tyrosine-phosphorylated shc.,similarity:Belongs to the GRB2/sem-5/DRK family.,similarity:Contains 1 SH2 domain.,similarity:Contains 2 SH3 domains.,subunit:Interacts with phosphorylated LIME1 upon TCR activation (By similarity). Interacts with phosphorylated LAT and LAX1 upon TCR activation. Interacts with SHB.,

Nanjing BYabscience technology Co.,Ltd

**Background**

This gene encodes a member of the GRB2/Sem5/Drk family. This member is an adaptor-like protein involved in leukocyte-specific protein-tyrosine kinase signaling. Like its related family member, GRB2-related adaptor protein (GRAP), this protein contains an SH2 domain flanked by two SH3 domains. This protein interacts with other proteins, such as GRB2-associated binding protein 1 (GAB1) and the SLP-76 leukocyte protein (LCP2), through its SH3 domains. Multiple alternatively spliced transcript variants encoding distinct isoforms have been found for this gene. [provided by RefSeq, Apr 2014],

matters needing attention

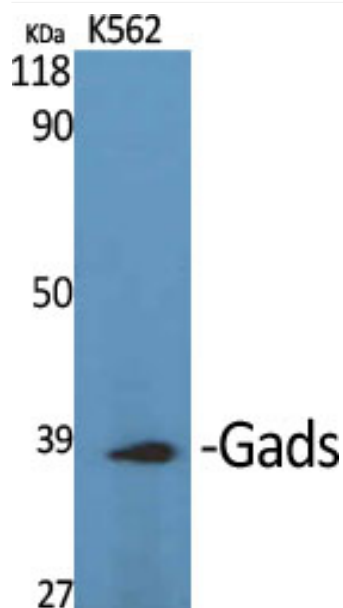
Avoid repeated freezing and thawing!

Usage suggestions

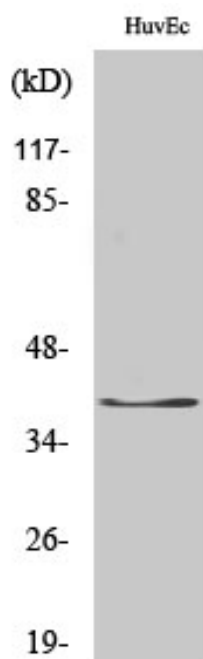
This product can be used in immunological reaction related experiments. For more information, please consult technical personnel.



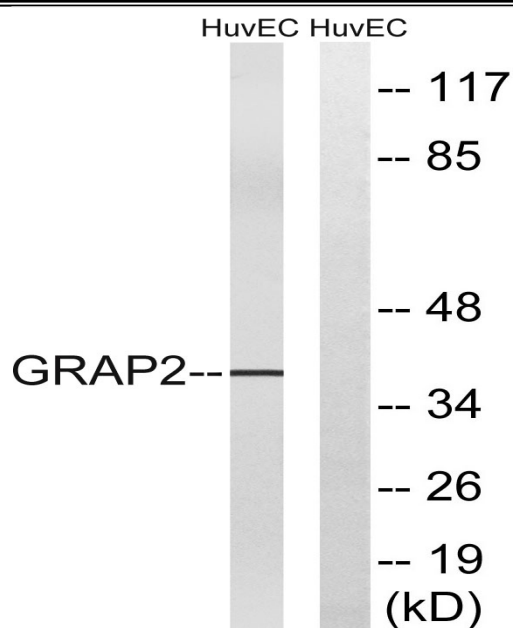
Products Images



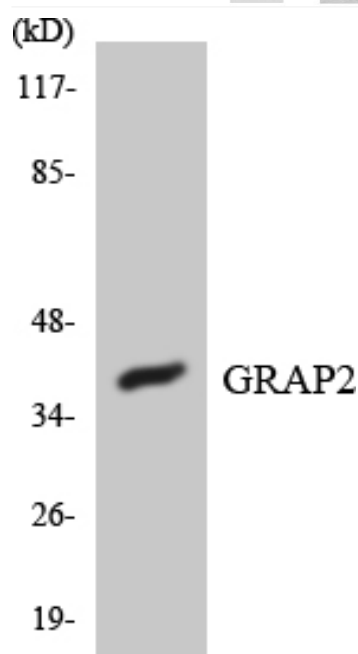
Western Blot analysis of various cells using Gads Polyclonal Antibody



Western Blot analysis of HuvEc cells using Gads Polyclonal Antibody



Western blot analysis of lysates from HUVEC cells, using GRAP2 Antibody. The lane on the right is blocked with the synthesized peptide.



Western blot analysis of the lysates from HUVEC cells using GRAP2 antibody.