



GFRP Polyclonal Antibody

Catalog No	BYab-03900
Isotype	IgG
Reactivity	Human;Rat
Applications	IHC;IF;ELISA
Gene Name	GCHFR
Protein Name	GTP cyclohydrolase 1 feedback regulatory protein
Immunogen	The antiserum was produced against synthesized peptide derived from human GCHFR. AA range:31-80
Specificity	GFRP Polyclonal Antibody detects endogenous levels of GFRP protein.
Formulation	Liquid in PBS containing 50% glycerol, 0.5% BSA and 0.02% sodium azide.
Source	Polyclonal, Rabbit,IgG
Purification	The antibody was affinity-purified from rabbit antiserum by affinity-chromatography using epitope-specific immunogen.
Dilution	IHC: 1/100 - 1/300. ELISA: 1/10000.. IF 1:50-200
Concentration	1 mg/ml
Purity	≥90%
Storage Stability	-20°C/1 year
Synonyms	GCHFR; GFRP; GTP cyclohydrolase 1 feedback regulatory protein; GFRP; GTP cyclohydrolase I feedback regulatory protein; p35
Observed Band	
Cell Pathway	Nucleus . Nucleus membrane . Cytoplasm, cytosol .
Tissue Specificity	In epidermis, expressed predominantly in basal undifferentiated keratinocytes and in some but not all melanocytes (at protein level).
Function	function:Mediates tetrahydrobiopterin inhibition of GTP cyclohydrolase 1. This inhibition is reversed by L-phenylalanine.,similarity:Belongs to the GFRP family.,subunit:Homopentamer. Forms a complex with GCH1 where a GCH1 homodecamer is sandwiched by two GFRP homopentamers (By similarity). Interacts with GCH1.,tissue specificity:In epidermis, expressed predominantly in basal undifferentiated keratinocytes and in some but not all melanocytes (at protein level).,
Background	GTP cyclohydrolase I feedback regulatory protein binds to and mediates tetrahydrobiopterin inhibition of GTP cyclohydrolase I. The regulatory protein,

Nanjing BYabscience technology Co.,Ltd



GCHFR, consists of a homodimer. It is postulated that GCHFR may play a role in regulating phenylalanine metabolism in the liver and in the production of biogenic amine neurotransmitters and nitric oxide. [provided by RefSeq, Jul 2008],

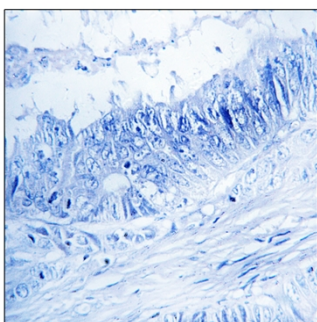
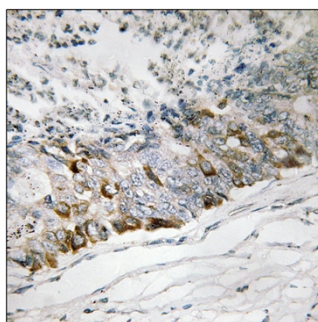
matters needing attention

Avoid repeated freezing and thawing!

Usage suggestions

This product can be used in immunological reaction related experiments. For more information, please consult technical personnel.

Products Images



Immunohistochemistry analysis of paraffin-embedded human colon carcinoma tissue, using GCHFR Antibody. The picture on the right is blocked with the synthesized peptide.