



HC-II Polyclonal Antibody

Catalog No	BYab-03911
Isotype	IgG
Reactivity	Human;Mouse;Rat
Applications	WB;IHC;IF;ELISA
Gene Name	SERPIND1
Protein Name	Heparin cofactor 2
Immunogen	The antiserum was produced against synthesized peptide derived from human Heparin Cofactor II. AA range:41-90
Specificity	HC-II Polyclonal Antibody detects endogenous levels of HC-II protein.
Formulation	Liquid in PBS containing 50% glycerol, 0.5% BSA and 0.02% sodium azide.
Source	Polyclonal, Rabbit,IgG
Purification	The antibody was affinity-purified from rabbit antiserum by affinity-chromatography using epitope-specific immunogen.
Dilution	Western Blot: 1/500 - 1/2000. Immunohistochemistry: 1/100 - 1/300. Immunofluorescence: 1/200 - 1/1000. ELISA: 1/5000. Not yet tested in other applications.
Concentration	1 mg/ml
Purity	≥90%
Storage Stability	-20°C/1 year
Synonyms	SERPIND1; HCF2; Heparin cofactor 2; Heparin cofactor II; HC-II; Protease inhibitor leuserpin-2; HLS2; Serpin D1
Observed Band	60kD
Cell Pathway	extracellular region,extracellular space,extracellular exosome,
Tissue Specificity	Expressed predominantly in liver. Also present in plasma.
Function	disease:Defects in SERPIND1 are the cause of heparin cofactor 2 deficiency (HCF2D) [MIM:612356]. HCF2D is an important risk factor for hereditary thrombophilia, a hemostatic disorder characterized by a tendency to recurrent thrombosis.,domain:The N-terminal acidic repeat region mediates, in part, the glycosaminoglycan-accelerated thrombin inhibition.,function:Peptides at the N-terminal of HC-II have chemotactic activity for both monocytes and neutrophils.,function:Thrombin inhibitor activated by the glycosaminoglycans, heparin or dermatan sulfate. In the presence of the latter, HC-II becomes the predominant thrombin inhibitor in place of antithrombin III (AT-III). Also inhibits

Nanjing BYabs science technology Co.,Ltd



chymotrypsin, but in a glycosaminoglycan-independent manner.,similarity:Belongs to the serpin family.,tissue specificity:Expressed predominantly in liver.,

Background

This gene belongs to the serpin gene superfamily. Serpins play roles in many processes including inflammation, blood clotting, and cancer metastasis. Members of this family have highly conserved secondary structures with a reactive center loop that interacts with the protease active site to inhibit protease activity. This gene encodes a plasma serine protease that functions as a thrombin and chymotrypsin inhibitor. The protein is activated by heparin, dermatan sulfate, and glycosaminoglycans. Allelic variations in this gene are associated with heparin cofactor II deficiency. [provided by RefSeq, Jul 2015],

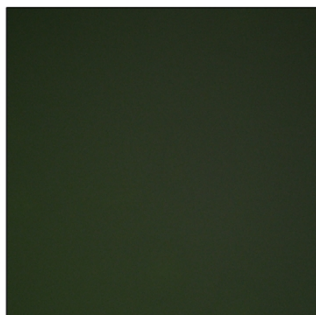
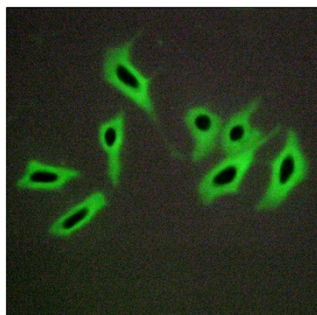
matters needing attention

Avoid repeated freezing and thawing!

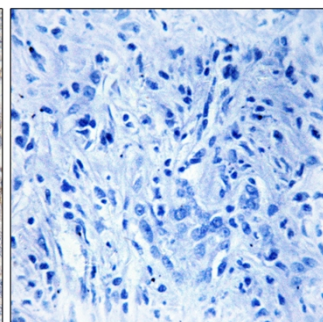
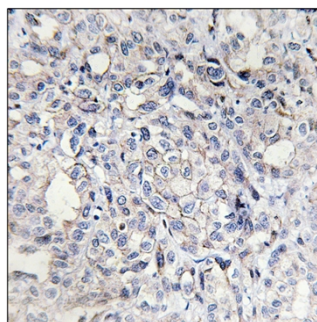
Usage suggestions

This product can be used in immunological reaction related experiments. For more information, please consult technical personnel.

Products Images



Immunofluorescence analysis of HepG2 cells, using Heparin Cofactor II Antibody. The picture on the right is blocked with the synthesized peptide.



Immunohistochemistry analysis of paraffin-embedded human liver carcinoma tissue, using Heparin Cofactor II Antibody. The picture on the right is blocked with the synthesized peptide.

Nanjing BYabscience technology Co.,Ltd

网址: www.njbybio.com

官方热线: 025-5229-8998

监督电话: 15950492658