



HSP70L Polyclonal Antibody

Catalog No	BYab-03915
Isotype	IgG
Reactivity	Human;Mouse;Rat
Applications	WB;IHC;IF;ELISA
Gene Name	HSPA1L/HSPA1A
Protein Name	Heat shock 70 kDa protein 1-like/Heat shock 70 kDa protein 1A/1B
Immunogen	The antiserum was produced against synthesized peptide derived from human HSPA1L. AA range:221-270
Specificity	HSP70 Polyclonal Antibody detects endogenous levels of HSP70 protein.
Formulation	Liquid in PBS containing 50% glycerol, 0.5% BSA and 0.02% sodium azide.
Source	Polyclonal, Rabbit,IgG
Purification	The antibody was affinity-purified from rabbit antiserum by affinity-chromatography using epitope-specific immunogen.
Dilution	WB: 1/500 - 1/2000. IHC: 1/100 - 1/300. ELISA: 1/40000.. IF 1:50-200
Concentration	1 mg/ml
Purity	≥90%
Storage Stability	-20°C/1 year
Synonyms	HSPA1L; Heat shock 70 kDa protein 1-like; Heat shock 70 kDa protein 1L; Heat shock 70 kDa protein 1-Hom; HSP70-Hom; HSPA1A; HSPA1; HSPA1B; Heat shock 70 kDa protein 1A/1B; Heat shock 70 kDa protein 1/2; HSP70-1/HSP70-2; HSP70.1/HSP70.2
Observed Band	70kD
Cell Pathway	zona pellucida receptor complex,nucleoplasm,mitochondrial matrix,cytosol,COP9 signalosome,cell body,blood microparticle,
Tissue Specificity	Expressed in spermatids.
Function	function:In cooperation with other chaperones, Hsp70s stabilize preexistent proteins against aggregation and mediate the folding of newly translated polypeptides in the cytosol as well as within organelles. These chaperones participate in all these processes through their ability to recognize nonnative conformations of other proteins. They bind extended peptide segments with a net hydrophobic character exposed by polypeptides during translation and membrane translocation, or following stress-induced damage.,induction:Not induced by heat

Nanjing BYabscience technology Co.,Ltd



shock.,similarity:Belongs to the heat shock protein 70 family.,tissue
specificity:Expressed in spermatids.,

Background

This gene encodes a 70kDa heat shock protein. In conjunction with other heat shock proteins, this protein stabilizes existing proteins against aggregation and mediates the folding of newly translated proteins in the cytosol and in organelles. The gene is located in the major histocompatibility complex class III region, in a cluster with two closely related genes which also encode isoforms of the 70kDa heat shock protein. [provided by RefSeq, Jul 2008],

matters needing attention

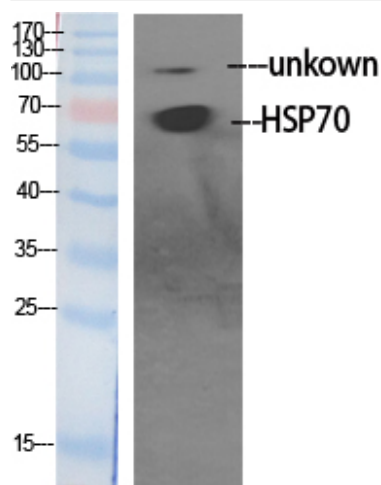
Avoid repeated freezing and thawing!

Usage suggestions

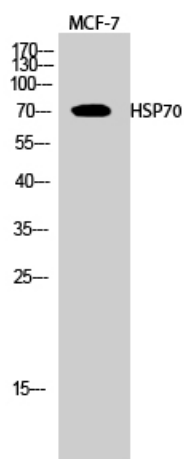
This product can be used in immunological reaction related experiments. For more information, please consult technical personnel.



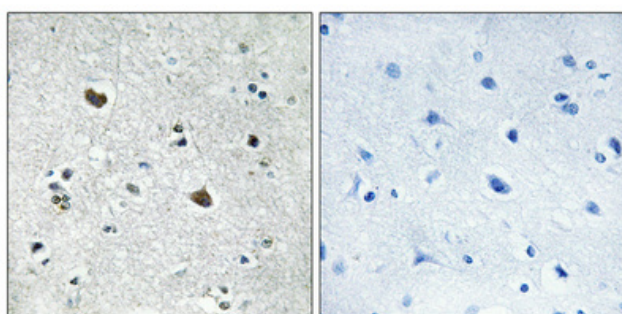
Products Images



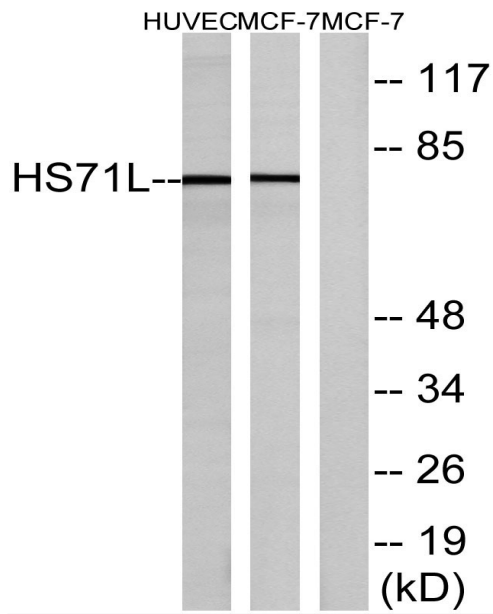
Western Blot analysis of various cells using HSP70
Polyclonal Antibody diluted at 1:1000



Western Blot analysis of MCF-7 cells using HSP70
Polyclonal Antibody diluted at 1:1000



Immunohistochemical analysis of paraffin-embedded
Human brain. Antibody was diluted at 1:100(4°
overnight). High-pressure and temperature
Tris-EDTA,pH8.0 was used for antigen retrieval.
Negative contrl (right) obtained from antibody was
pre-absorbed by immunogen peptide.



Western blot analysis of lysates from MCF-7 cells and HUVEC cells, using HS71L Antibody. The lane on the right is blocked with the synthesized peptide.