



# LONP2 Polyclonal Antibody

Catalog No	BYab-03946
Isotype	IgG
Reactivity	Human;Mouse;Rat
Applications	WB;IHC;IF;ELISA
Gene Name	LONP2
Protein Name	Lon protease homolog 2 peroxisomal
Immunogen	The antiserum was produced against synthesized peptide derived from human LONP2. AA range:780-829
Specificity	LONP2 Polyclonal Antibody detects endogenous levels of LONP2 protein.
Formulation	Liquid in PBS containing 50% glycerol, 0.5% BSA and 0.02% sodium azide.
Source	Polyclonal, Rabbit,IgG
Purification	The antibody was affinity-purified from rabbit antiserum by affinity-chromatography using epitope-specific immunogen.
Dilution	WB: 1/500 - 1/2000. IHC: 1/100 - 1/300. ELISA: 1/40000.. IF 1:50-200
Concentration	1 mg/ml
Purity	≥90%
Storage Stability	-20°C/1 year
Synonyms	LONP2; LONP; Lon protease homolog 2; peroxisomal; Lon protease-like protein 2; Lon protease 2; Peroxisomal Lon protease
Observed Band	95kD
Cell Pathway	Peroxisome matrix .
Tissue Specificity	Widely expressed, with high levels in the liver, kidney and pancreas.
Function	function:Probable serine protease which may be involved in peroxisome biogenesis.,similarity:Belongs to the peptidase S16 family.,
Background	function:Probable serine protease which may be involved in peroxisome biogenesis.,similarity:Belongs to the peptidase S16 family.,
matters needing attention	Avoid repeated freezing and thawing!

Nanjing BYabscience technology Co.,Ltd

网址: [www.njbybio.com](http://www.njbybio.com)

官方热线: 025-5229-8998

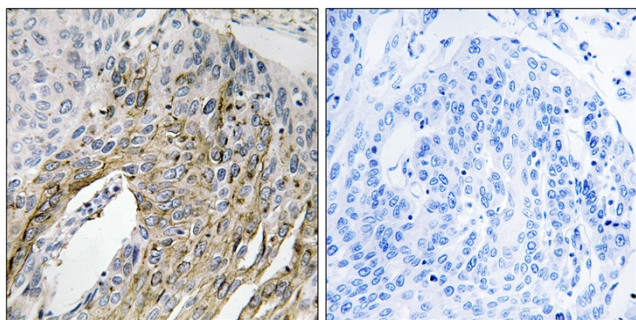
监督电话: 15950492658



### Usage suggestions

This product can be used in immunological reaction related experiments. For more information, please consult technical personnel.

### Products Images



Immunohistochemistry analysis of paraffin-embedded human lung carcinoma tissue, using LONP2 Antibody. The picture on the right is blocked with the synthesized peptide.