



ME2 Polyclonal Antibody

Catalog No	BYab-03952
Isotype	IgG
Reactivity	Human;Rat;Mouse;
Applications	WB;IHC;IF;ELISA
Gene Name	ME2
Protein Name	NAD-dependent malic enzyme mitochondrial
Immunogen	The antiserum was produced against synthesized peptide derived from human ME2. AA range:201-250
Specificity	ME2 Polyclonal Antibody detects endogenous levels of ME2 protein.
Formulation	Liquid in PBS containing 50% glycerol, 0.5% BSA and 0.02% sodium azide.
Source	Polyclonal, Rabbit,IgG
Purification	The antibody was affinity-purified from rabbit antiserum by affinity-chromatography using epitope-specific immunogen.
Dilution	WB: 1/500 - 1/2000. IHC: 1/100 - 1/300. ELISA: 1/40000.. IF 1:50-200
Concentration	1 mg/ml
Purity	≥90%
Storage Stability	-20°C/1 year
Synonyms	ME2; NAD-dependent malic enzyme; mitochondrial; NAD-ME; Malic enzyme 2
Observed Band	65kD
Cell Pathway	Mitochondrion matrix .
Tissue Specificity	B-cell,Placenta,Platelet,
Function	catalytic activity:(S)-malate + NAD(+) = pyruvate + CO(2) + NADH.,cofactor:Divalent metal cations. Prefers magnesium or manganese.,enzyme regulation:Subject to allosteric activation by fumarate.,miscellaneous:This isoenzyme can also use NADP(+) but is more effective with NAD(+).,similarity:Belongs to the malic enzymes family.,subunit:Homotetramer.,
Background	This gene encodes a mitochondrial NAD-dependent malic enzyme, a homotetrameric protein, that catalyzes the oxidative decarboxylation of malate to pyruvate. It had previously been weakly linked to a syndrome known as Friedreich ataxia that has since been shown to be the result of mutation in a completely

Nanjing BYabscience technology Co.,Ltd



different gene. Certain single-nucleotide polymorphism haplotypes of this gene have been shown to increase the risk for idiopathic generalized epilepsy. Alternatively spliced transcript variants encoding different isoforms found for this gene. [provided by RefSeq, Dec 2009],

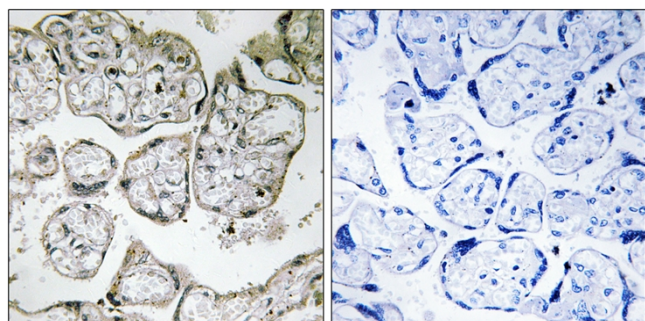
matters needing attention

Avoid repeated freezing and thawing!

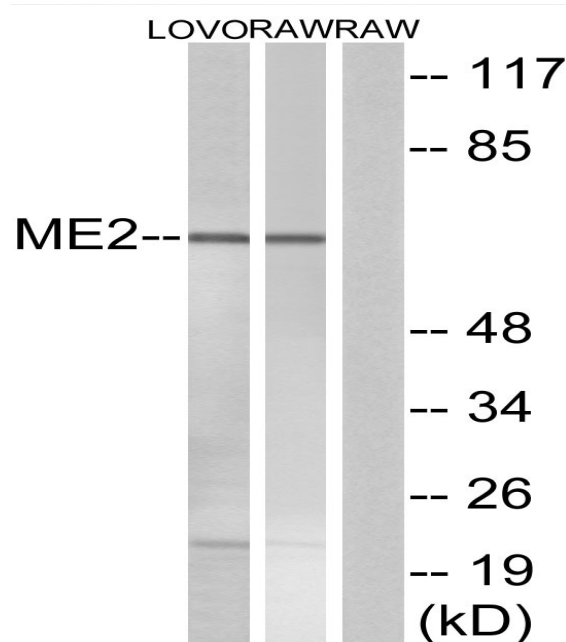
Usage suggestions

This product can be used in immunological reaction related experiments. For more information, please consult technical personnel.

Products Images



Immunohistochemistry analysis of paraffin-embedded human placenta tissue, using ME2 Antibody. The picture on the right is blocked with the synthesized peptide.



Western blot analysis of lysates from RAW264.7 and LOVO cells, using ME2 Antibody. The lane on the right is blocked with the synthesized peptide.

Nanjing BYabs science technology Co.,Ltd