



MOV10L1 Polyclonal Antibody

Catalog No	BYab-03968
Isotype	IgG
Reactivity	Human;Rat;Mouse;
Applications	WB;IHC;IF;ELISA
Gene Name	MOV10L1
Protein Name	Putative helicase Mov10l1
Immunogen	The antiserum was produced against synthesized peptide derived from human MOV10L1. AA range:318-367
Specificity	MOV10L1 Polyclonal Antibody detects endogenous levels of MOV10L1 protein.
Formulation	Liquid in PBS containing 50% glycerol, 0.5% BSA and 0.02% sodium azide.
Source	Polyclonal, Rabbit,IgG
Purification	The antibody was affinity-purified from rabbit antiserum by affinity-chromatography using epitope-specific immunogen.
Dilution	WB: 1/500 - 1/2000. IHC: 1/100 - 1/300. ELISA: 1/5000.. IF 1:50-200
Concentration	1 mg/ml
Purity	≥90%
Storage Stability	-20°C/1 year
Synonyms	MOV10L1; Putative helicase Mov10l1; Moloney leukemia virus 10-like protein 1; MOV10-like protein 1
Observed Band	140kD
Cell Pathway	Cytoplasm . Component of the meiotic nuage, also named P granule, a germ-cell-specific organelle required to repress transposon activity during meiosis. .
Tissue Specificity	[Isoform 1]: Specifically expressed in testis.
Function	alternative products:Additional isoforms seem to exist,function:Putative RNA helicase. Isoform 1 may play a role in male germ cell development.,similarity:Belongs to the DNA2/NAM7 helicase family. SDE3 subfamily.,tissue specificity:Isoform 1 is specifically expressed in testis.,
Background	Mov10 RISC complex RNA helicase like 1(MOV10L1) Homo sapiens This gene is similar to a mouse gene that encodes a putative RNA helicase and shows testis-specific expression. Multiple transcript variants encoding different isoforms have been found for this gene. [provided by RefSeq, Aug 2009],

Nanjing BYabscience technology Co.,Ltd



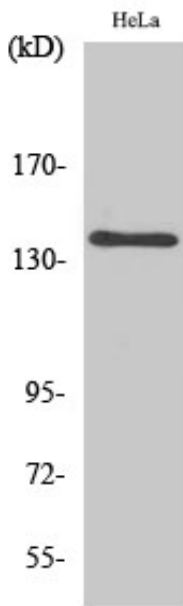
matters needing attention

Avoid repeated freezing and thawing!

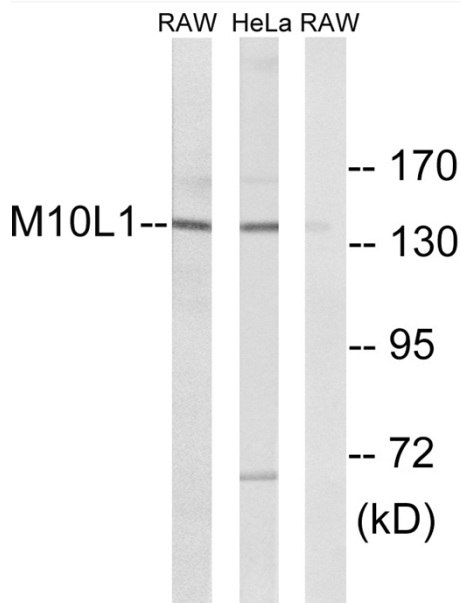
Usage suggestions

This product can be used in immunological reaction related experiments. For more information, please consult technical personnel.

Products Images

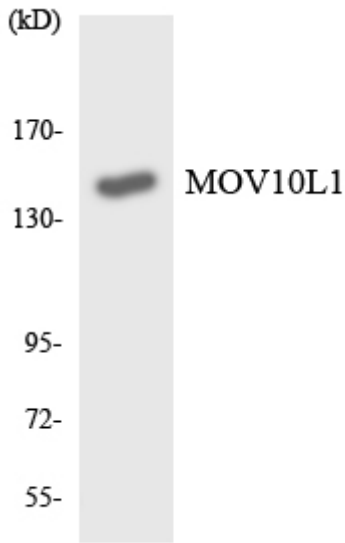


Western Blot analysis of various cells using MOV10L1 Polyclonal Antibody diluted at 1:500

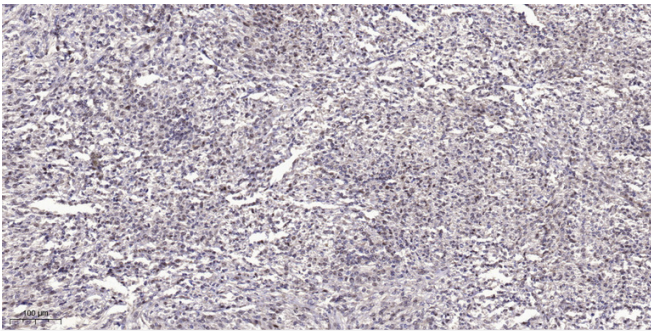


Western blot analysis of lysates from HeLa and RAW264.7 cells, using MOV10L1 Antibody. The lane on the right is blocked with the synthesized peptide.

Nanjing BYabscience technology Co.,Ltd



Western blot analysis of the lysates from HT-29 cells using MOV10L1 antibody.



Immunohistochemical analysis of paraffin-embedded human small intestinal carcinoma tissue. 1, primary Antibody was diluted at 1:200(4° overnight). 2, Sodium citrate pH 6.0 was used for antigen retrieval(>98° C,20min). 3, Secondary antibody was diluted at 1:200