



MRP-L20 Polyclonal Antibody

Catalog No	BYab-03982
Isotype	IgG
Reactivity	Human;Mouse;Rat
Applications	WB;IHC;IF;ELISA
Gene Name	MRPL20
Protein Name	39S ribosomal protein L20 mitochondrial
Immunogen	The antiserum was produced against synthesized peptide derived from human MRPL20. AA range:100-149
Specificity	MRP-L20 Polyclonal Antibody detects endogenous levels of MRP-L20 protein.
Formulation	Liquid in PBS containing 50% glycerol, 0.5% BSA and 0.02% sodium azide.
Source	Polyclonal, Rabbit,IgG
Purification	The antibody was affinity-purified from rabbit antiserum by affinity-chromatography using epitope-specific immunogen.
Dilution	WB: 1/500 - 1/2000. IHC: 1/100 - 1/300. ELISA: 1/40000.. IF 1:50-200
Concentration	1 mg/ml
Purity	≥90%
Storage Stability	-20°C/1 year
Synonyms	MRPL20; 39S ribosomal protein L20; mitochondrial; L20mt; MRP-L20
Observed Band	22kD
Cell Pathway	Mitochondrion .
Tissue Specificity	Bone marrow,Lymph,Mammary gland,Whole embryo,
Function	similarity:Belongs to the ribosomal protein L20P family.,
Background	Mammalian mitochondrial ribosomal proteins are encoded by nuclear genes and help in protein synthesis within the mitochondrion. Mitochondrial ribosomes (mitoribosomes) consist of a small 28S subunit and a large 39S subunit. They have an estimated 75% protein to rRNA composition compared to prokaryotic ribosomes, where this ratio is reversed. Another difference between mammalian mitoribosomes and prokaryotic ribosomes is that the latter contain a 5S rRNA. Among different species, the proteins comprising the mitoribosome differ greatly in sequence, and sometimes in biochemical properties, which prevents easy recognition by sequence homology. This gene encodes a 39S subunit protein. A

Nanjing BYabscience technology Co.,Ltd



pseudogene corresponding to this gene is found on chromosome 21q. Alternative splicing results in multiple transcript variants encoding different isoforms. [provided by RefSeq, Jan 2016],

matters needing attention

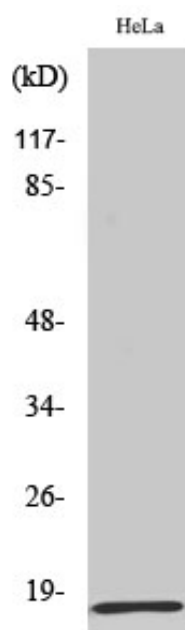
Avoid repeated freezing and thawing!

Usage suggestions

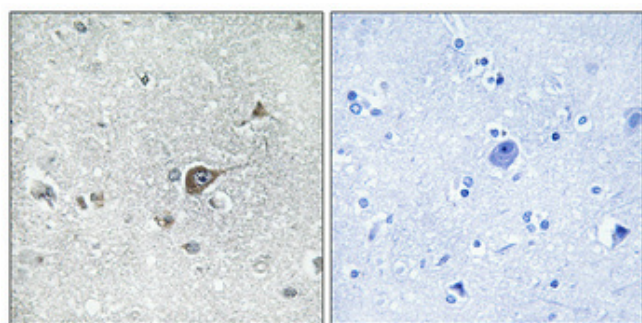
This product can be used in immunological reaction related experiments. For more information, please consult technical personnel.



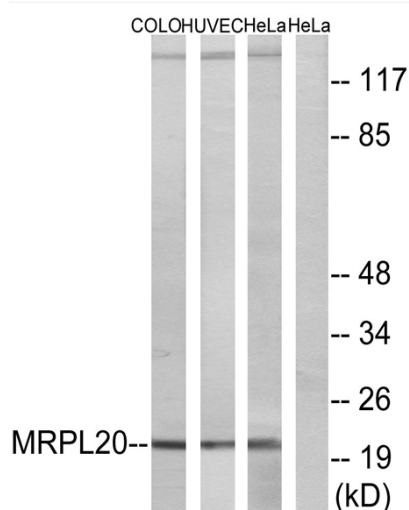
Products Images



Western Blot analysis of various cells using MRP-L20 Polyclonal Antibody



Immunohistochemical analysis of paraffin-embedded Human brain. Antibody was diluted at 1:100(4° overnight). High-pressure and temperature Tris-EDTA,pH8.0 was used for antigen retrieval. Negative contrl (right) obtained from antibody was pre-absorbed by immunogen peptide.



Western blot analysis of lysates from Hela, HUVEC, and COLO cells, using MRPL20 Antibody. The lane on the right is blocked with the synthesized peptide.

Nanjing BYabscience technology Co.,Ltd

网址: www.njbybio.com

官方热线: 025-5229-8998

监督电话: 15950492658