



# MRP-L39 Polyclonal Antibody

<b>Catalog No</b>	BYab-03990
<b>Isotype</b>	IgG
<b>Reactivity</b>	Human;Rat;Mouse;
<b>Applications</b>	WB;IHC;IF;ELISA
<b>Gene Name</b>	MRPL39
<b>Protein Name</b>	39S ribosomal protein L39 mitochondrial
<b>Immunogen</b>	The antiserum was produced against synthesized peptide derived from human MRPL39. AA range:289-338
<b>Specificity</b>	MRP-L39 Polyclonal Antibody detects endogenous levels of MRP-L39 protein.
<b>Formulation</b>	Liquid in PBS containing 50% glycerol, 0.5% BSA and 0.02% sodium azide.
<b>Source</b>	Polyclonal, Rabbit,IgG
<b>Purification</b>	The antibody was affinity-purified from rabbit antiserum by affinity-chromatography using epitope-specific immunogen.
<b>Dilution</b>	WB: 1/500 - 1/2000. IHC: 1/100 - 1/300. ELISA: 1/40000.. IF 1:50-200
<b>Concentration</b>	1 mg/ml
<b>Purity</b>	≥90%
<b>Storage Stability</b>	-20°C/1 year
<b>Synonyms</b>	MRPL39; C21orf92; MRPL5; RPML5; MSTP003; PRED22; 39S ribosomal protein L39; mitochondrial; L39mt; MRP-L39; 39S ribosomal protein L5, mitochondrial; L5mt; MRP-L5
<b>Observed Band</b>	39kD
<b>Cell Pathway</b>	Mitochondrion .
<b>Tissue Specificity</b>	Isoform 1 is ubiquitously expressed. Isoform 2 is heart-specific.
<b>Function</b>	caution:It is uncertain whether Met-1 or Met-6 is the initiator.,caution:Ref.1 indicates C21orf8 as a synonym for this orf, this is incorrect, C21orf8 is already assigned to another chromosome 21 region.,similarity:To the N-terminal of threonyl-tRNA synthetases.,tissue specificity:Ubiquitous (isoform 1); heart-specific (isoform 2).,
<b>Background</b>	Mammalian mitochondrial ribosomal proteins are encoded by nuclear genes and help in protein synthesis within the mitochondrion. Mitochondrial ribosomes (mitoribosomes) consist of a small 28S subunit and a large 39S subunit. They

**Nanjing BYabscience technology Co.,Ltd**



have an estimated 75% protein to rRNA composition compared to prokaryotic ribosomes, where this ratio is reversed. Another difference between mammalian mitoribosomes and prokaryotic ribosomes is that the latter contain a 5S rRNA. Among different species, the proteins comprising the mitoribosome differ greatly in sequence, and sometimes in biochemical properties, which prevents easy recognition by sequence homology. This gene encodes a 39S subunit protein. Two transcript variants encoding distinct isoforms have been described. A pseudogene corresponding to this gene is found on chromosome 5q. [provided by RefSeq, Jul 2008],

**matters needing attention**

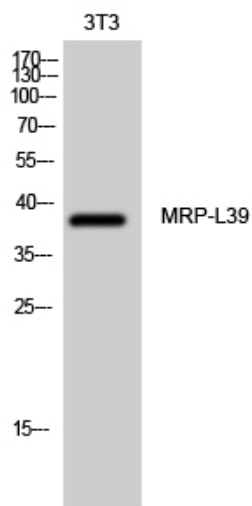
Avoid repeated freezing and thawing!

**Usage suggestions**

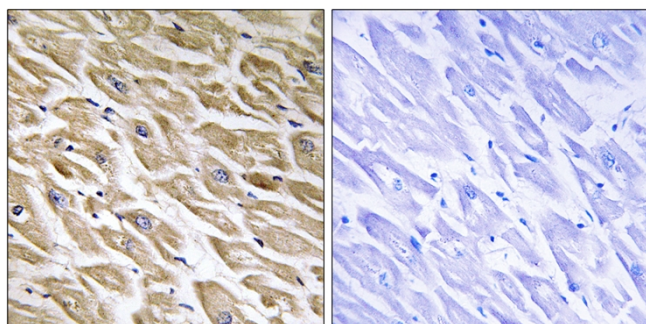
This product can be used in immunological reaction related experiments. For more information, please consult technical personnel.



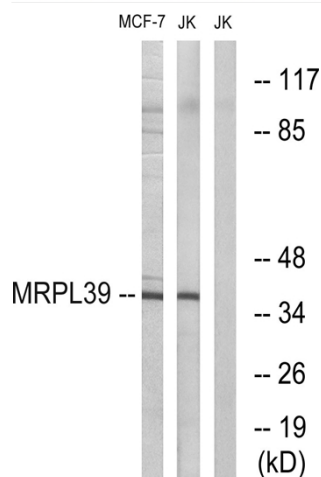
## Products Images



Western Blot analysis of 3T3 cells using MRP-L39 Polyclonal Antibody diluted at 1:1000



Immunohistochemistry analysis of paraffin-embedded human heart tissue, using MRPL39 Antibody. The picture on the right is blocked with the synthesized peptide.



Western blot analysis of lysates from Jurkat and MCF-7 cells, using MRPL39 Antibody. The lane on the right is blocked with the synthesized peptide.

Nanjing BYabscience technology Co.,Ltd

网址: [www.njbybio.com](http://www.njbybio.com)

官方热线: 025-5229-8998

监督电话: 15950492658