



# MRP-L44 Polyclonal Antibody

<b>Catalog No</b>	BYab-03994
<b>Isotype</b>	IgG
<b>Reactivity</b>	Human;Mouse;Rat;Monkey
<b>Applications</b>	WB;IHC;IF;ELISA
<b>Gene Name</b>	MRPL44
<b>Protein Name</b>	39S ribosomal protein L44 mitochondrial
<b>Immunogen</b>	The antiserum was produced against synthesized peptide derived from human MRPL44. AA range:221-270
<b>Specificity</b>	MRP-L44 Polyclonal Antibody detects endogenous levels of MRP-L44 protein.
<b>Formulation</b>	Liquid in PBS containing 50% glycerol, 0.5% BSA and 0.02% sodium azide.
<b>Source</b>	Polyclonal, Rabbit,IgG
<b>Purification</b>	The antibody was affinity-purified from rabbit antiserum by affinity-chromatography using epitope-specific immunogen.
<b>Dilution</b>	Western Blot: 1/500 - 1/2000. Immunohistochemistry: 1/100 - 1/300. Immunofluorescence: 1/200 - 1/1000. ELISA: 1/40000. Not yet tested in other applications.
<b>Concentration</b>	1 mg/ml
<b>Purity</b>	≥90%
<b>Storage Stability</b>	-20°C/1 year
<b>Synonyms</b>	MRPL44; 39S ribosomal protein L44; mitochondrial; L44mt; MRP-L44
<b>Observed Band</b>	36kD
<b>Cell Pathway</b>	Mitochondrion .
<b>Tissue Specificity</b>	Uterus,
<b>Function</b>	function:Component of the 39S subunit of mitochondrial ribosome.,similarity:Contains 1 DRBM (double-stranded RNA-binding) domain.,similarity:Contains 1 RNase III domain.,
<b>Background</b>	Mammalian mitochondrial ribosomal proteins are encoded by nuclear genes and help in protein synthesis within the mitochondrion. Mitochondrial ribosomes (mitoribosomes) consist of a small 28S subunit and a large 39S subunit. They have an estimated 75% protein to rRNA composition compared to prokaryotic ribosomes, where this ratio is reversed. Another difference between mammalian mitoribosomes and prokaryotic ribosomes is that the latter contain a 5S rRNA.

**Nanjing BYabs science technology Co.,Ltd**



Among different species, the proteins comprising the mitoribosome differ greatly in sequence, and sometimes in biochemical properties, which prevents easy recognition by sequence homology. This gene encodes a 39S subunit protein. [provided by RefSeq, Jul 2008],

**matters needing attention**

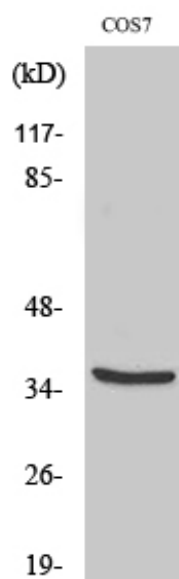
Avoid repeated freezing and thawing!

**Usage suggestions**

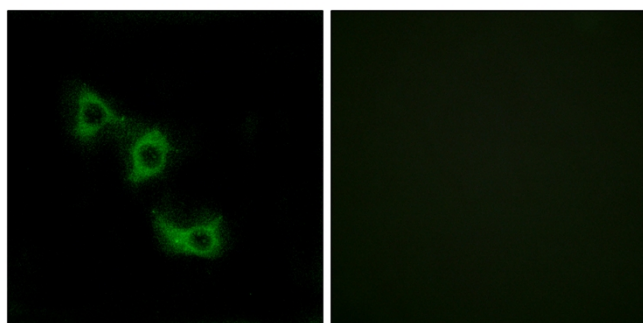
This product can be used in immunological reaction related experiments. For more information, please consult technical personnel.



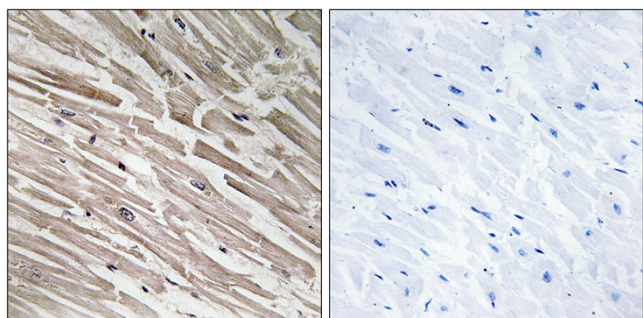
## Products Images



Western Blot analysis of various cells using MRP-L44 Polyclonal Antibody



Immunofluorescence analysis of HUVEC cells, using MRPL44 Antibody. The picture on the right is blocked with the synthesized peptide.



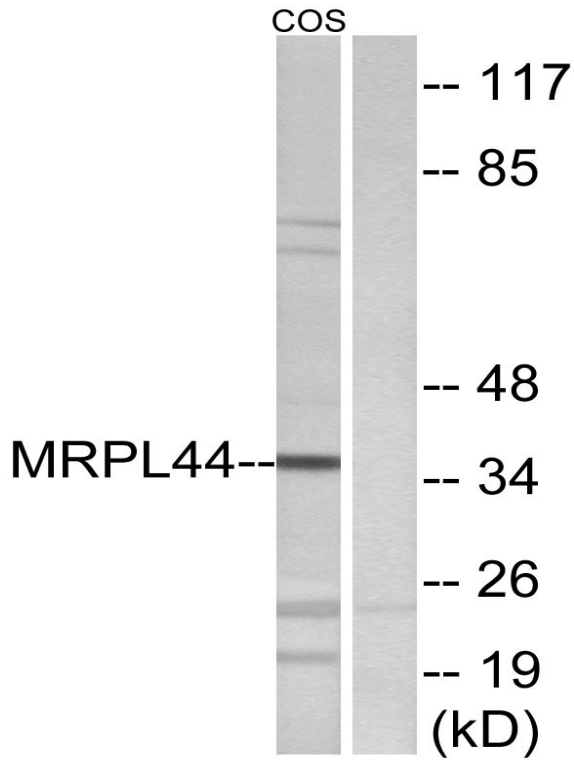
Immunohistochemistry analysis of paraffin-embedded human heart tissue, using MRPL44 Antibody. The picture on the right is blocked with the synthesized peptide.

Nanjing BYabs science technology Co.,Ltd

网址: [www.njbybio.com](http://www.njbybio.com)

官方热线: 025-5229-8998

监督电话: 15950492658



Western blot analysis of lysates from COS7 cells, using MRPL44 Antibody. The lane on the right is blocked with the synthesized peptide.