



# MRP-S27 Polyclonal Antibody

Catalog No	BYab-04014
Isotype	IgG
Reactivity	Human;Rat;Mouse;
Applications	WB;ELISA;IHC
Gene Name	MRPS27
Protein Name	28S ribosomal protein S27 mitochondrial
Immunogen	The antiserum was produced against synthesized peptide derived from human MRPS27. AA range:16-65
Specificity	MRP-S27 Polyclonal Antibody detects endogenous levels of MRP-S27 protein.
Formulation	Liquid in PBS containing 50% glycerol, 0.5% BSA and 0.02% sodium azide.
Source	Polyclonal, Rabbit,IgG
Purification	The antibody was affinity-purified from rabbit antiserum by affinity-chromatography using epitope-specific immunogen.
Dilution	WB 1:500-2000;IHC-p 1:50-300; ELISA 2000-20000
Concentration	1 mg/ml
Purity	≥90%
Storage Stability	-20°C/1 year
Synonyms	MRPS27; KIAA0264; 28S ribosomal protein S27; mitochondrial; MRP-S27; S27mt
Observed Band	48kD
Cell Pathway	Cytoplasm . Mitochondrion .
Tissue Specificity	Overexpressed in hepatocellular carcinoma tissues compared with adjacent non-tumoral liver tissues (at protein level) (PubMed:28714366). Ubiquitous (PubMed:22841715).
Function	similarity:Contains 2 PPR (pentatricopeptide) repeats.,subunit:Component of the mitochondrial ribosome small subunit (28S) which comprises a 12S rRNA and about 30 distinct proteins.,
Background	Mammalian mitochondrial ribosomal proteins are encoded by nuclear genes and help in protein synthesis within the mitochondrion. Mitochondrial ribosomes (mitoribosomes) consist of a small 28S subunit and a large 39S subunit. They have an estimated 75% protein to rRNA composition compared to prokaryotic ribosomes, where this ratio is reversed. Another difference between mammalian

Nanjing BYabscience technology Co.,Ltd



mitoribosomes and prokaryotic ribosomes is that the latter contain a 5S rRNA. Among different species, the proteins comprising the mitoribosome differ greatly in sequence, and sometimes in biochemical properties, which prevents easy recognition by sequence homology. This gene encodes a 28S subunit protein that may be a functional partner of the death associated protein 3 (DAP3). Alternative splicing results in multiple transcript variants encoding different isoforms. [provided by RefSeq, Nov 2013],

**matters needing attention**

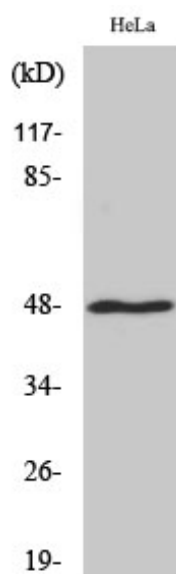
Avoid repeated freezing and thawing!

**Usage suggestions**

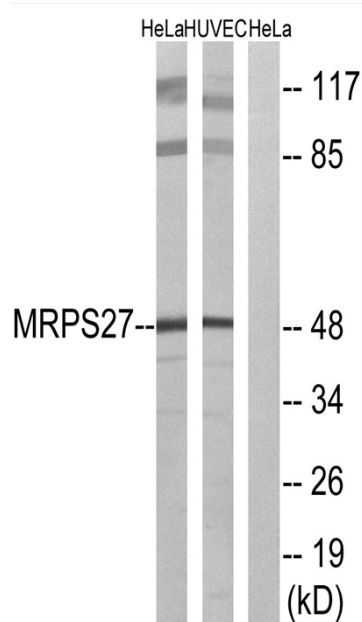
This product can be used in immunological reaction related experiments. For more information, please consult technical personnel.



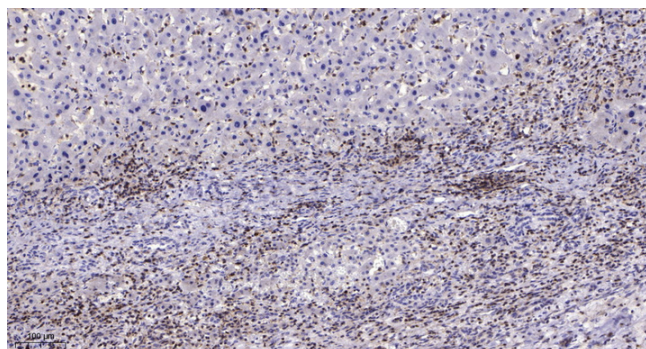
## Products Images



Western Blot analysis of various cells using MRP-S27 Polyclonal Antibody



Western blot analysis of lysates from HeLa and HUVEC cells, using MRPS27 Antibody. The lane on the right is blocked with the synthesized peptide.



Immunohistochemical analysis of paraffin-embedded human liver cancer. 1, Antibody was diluted at 1:200(4° overnight). 2, Tris-EDTA,pH9.0 was used for antigen retrieval. 3,Secondary antibody was diluted at 1:200(room temperature, 45min).

**Nanjing BYabs science technology Co.,Ltd**

网址: [www.njbybio.com](http://www.njbybio.com)

官方热线: 025-5229-8998

监督电话: 15950492658



**Nanjing BYabscience technology Co.,Ltd**

网址: [www.njbybio.com](http://www.njbybio.com)

官方热线: 025-5229-8998

监督电话: 15950492658