



# MTHFR Polyclonal Antibody

Catalog No	BYab-04024
Isotype	IgG
Reactivity	Human;Mouse;Monkey
Applications	WB;ELISA;IHC
Gene Name	MTHFR
Protein Name	Methylenetetrahydrofolate reductase
Immunogen	The antiserum was produced against synthesized peptide derived from human MTHFR. AA range:314-363
Specificity	MTHFR Polyclonal Antibody detects endogenous levels of MTHFR protein.
Formulation	Liquid in PBS containing 50% glycerol, 0.5% BSA and 0.02% sodium azide.
Source	Polyclonal, Rabbit,IgG
Purification	The antibody was affinity-purified from rabbit antiserum by affinity-chromatography using epitope-specific immunogen.
Dilution	WB 1:500-2000;IHC-p 1:50-300; ELISA 2000-20000
Concentration	1 mg/ml
Purity	≥90%
Storage Stability	-20°C/1 year
Synonyms	MTHFR; Methylenetetrahydrofolate reductase
Observed Band	75kD
Cell Pathway	cytosol,synapse,
Tissue Specificity	Brain,Liver,Lung,
Function	catalytic activity:5-methyltetrahydrofolate + NAD(P)(+) = 5,10-methylenetetrahydrofolate + NAD(P)H.,cofactor:FAD.,disease:Defects in MTHFR are the cause of methylenetetrahydrofolate reductase deficiency (MTHFRD) [MIM:236250]. MTHFRD is autosomal recessive disorder with a wide range of features including homocysteinuria, homocysteinemia [MIM:603174], developmental delay, severe mental retardation, perinatal death, psychiatric disturbances, and later-onset neurodegenerative disorders.,disease:Defects in MTHFR may be a cause of susceptibility to folate-sensitive neural tube defects (folate-sensitive NTD) [MIM:601634]. The most common NTDs are open spina bifida (myelomeningocele) and anencephaly.,disease:Defects in MTHFR may be a cause of susceptibility to ischemic stroke [MIM:601367]; also known as

Nanjing BYabscience technology Co.,Ltd



cerebrovascular accident or cerebral infarction. A stroke is an acute neurologic event leadin

**Background**

The protein encoded by this gene catalyzes the conversion of 5,10-methylenetetrahydrofolate to 5-methyltetrahydrofolate, a co-substrate for homocysteine remethylation to methionine. Genetic variation in this gene influences susceptibility to occlusive vascular disease, neural tube defects, colon cancer and acute leukemia, and mutations in this gene are associated with methylenetetrahydrofolate reductase deficiency.[provided by RefSeq, Oct 2009],

**matters needing attention**

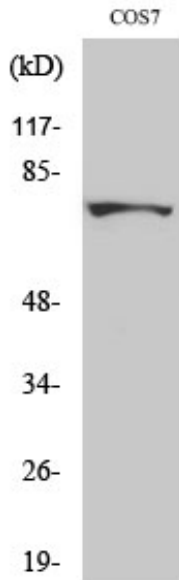
Avoid repeated freezing and thawing!

**Usage suggestions**

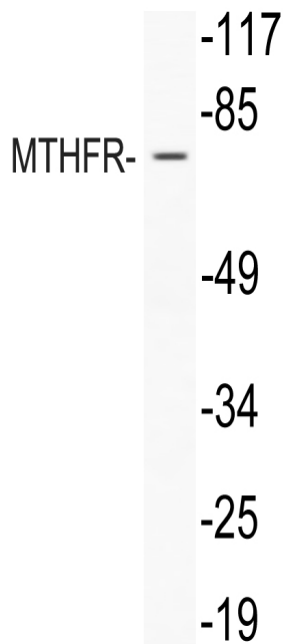
This product can be used in immunological reaction related experiments. For more information, please consult technical personnel.



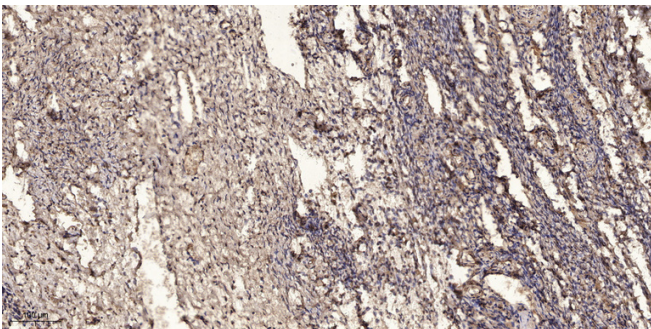
## Products Images



Western Blot analysis of various cells using MTHFR Polyclonal Antibody



Western blot analysis of lysate from COLO205 cells treated with Forskolin, using MTHFR antibody.



Immunohistochemical analysis of paraffin-embedded human oophoroma. 1, Antibody was diluted at 1:200(4° overnight). 2, Tris-EDTA,pH9.0 was used for antigen retrieval. 3,Secondary antibody was diluted at 1:200(room temperature, 45min).

**Nanjing BYabscience technology Co.,Ltd**

网址: [www.njbybio.com](http://www.njbybio.com)

官方热线: 025-5229-8998

监督电话: 15950492658



**Nanjing BYabscience technology Co.,Ltd**

网址: [www.njbybio.com](http://www.njbybio.com)

官方热线: 025-5229-8998

监督电话: 15950492658