



NEDL2 Polyclonal Antibody

Catalog No	BYab-04035
Isotype	IgG
Reactivity	Human;Rat;Mouse;
Applications	WB;ELISA
Gene Name	HECW2
Protein Name	E3 ubiquitin-protein ligase HECW2
Immunogen	The antiserum was produced against synthesized peptide derived from human HECW2. AA range:481-530
Specificity	NEDL2 Polyclonal Antibody detects endogenous levels of NEDL2 protein.
Formulation	Liquid in PBS containing 50% glycerol, 0.5% BSA and 0.02% sodium azide.
Source	Polyclonal, Rabbit,IgG
Purification	The antibody was affinity-purified from rabbit antiserum by affinity-chromatography using epitope-specific immunogen.
Dilution	Western Blot: 1/500 - 1/2000. ELISA: 1/10000. Not yet tested in other applications.
Concentration	1 mg/ml
Purity	≥90%
Storage Stability	-20°C/1 year
Synonyms	HECW2; KIAA1301; NEDL2; E3 ubiquitin-protein ligase HECW2; HECT; C2 and WW domain-containing protein 2; NEDD4-like E3 ubiquitin-protein ligase 2
Observed Band	140-150kD
Cell Pathway	Cytoplasm . Cytoplasm, cytoskeleton, spindle .
Tissue Specificity	Predominantly expressed in adult brain, lung and heart.
Function	function:E3 ubiquitin-protein ligase that mediates ubiquitination of TP73. Acts to stabilize TP73 and enhance activation of transcription by TP73.,pathway:Protein modification; protein ubiquitination.,similarity:Contains 1 C2 domain.,similarity:Contains 1 HECT (E6AP-type E3 ubiquitin-protein ligase) domain.,similarity:Contains 2 WW domains.,subunit:Interacts with TP73.,tissue specificity:Predominantly expressed in adult brain, lung and heart.,
Background	function:E3 ubiquitin-protein ligase that mediates ubiquitination of TP73. Acts to stabilize TP73 and enhance activation of transcription by TP73.,pathway:Protein modification; protein ubiquitination.,similarity:Contains 1 C2

Nanjing BYabscience technology Co.,Ltd



domain.,similarity:Contains 1 HECT (E6AP-type E3 ubiquitin-protein ligase)
domain.,similarity:Contains 2 WW domains.,subunit:Interacts with TP73.,tissue
specificity:Predominantly expressed in adult brain, lung and heart.,

**matters needing
attention**

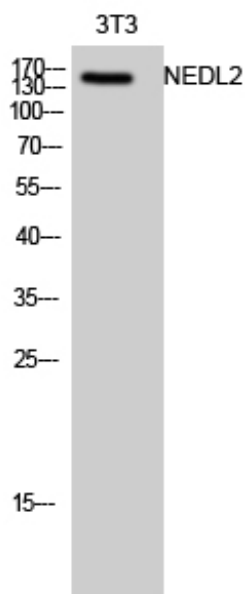
Avoid repeated freezing and thawing!

Usage suggestions

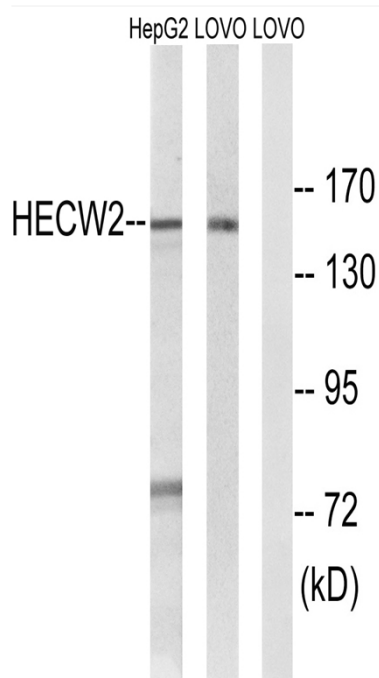
This product can be used in immunological reaction related experiments. For
more information, please consult technical personnel.



Products Images



Western Blot analysis of 3T3 cells using NEDL2
 Polyclonal Antibody diluted at 1:1000



Western blot analysis of lysates from LOVO and
 HepG2 cells, using HECW2 Antibody. The lane on the
 right is blocked with the synthesized peptide.