



NOC3L Polyclonal Antibody

Catalog No	BYab-04042
Isotype	IgG
Reactivity	Human;Mouse
Applications	WB;ELISA
Gene Name	NOC3L
Protein Name	Nucleolar complex protein 3 homolog
Immunogen	The antiserum was produced against synthesized peptide derived from human NOC3L. AA range:415-464
Specificity	NOC3L Polyclonal Antibody detects endogenous levels of NOC3L protein.
Formulation	Liquid in PBS containing 50% glycerol, 0.5% BSA and 0.02% sodium azide.
Source	Polyclonal, Rabbit,IgG
Purification	The antibody was affinity-purified from rabbit antiserum by affinity-chromatography using epitope-specific immunogen.
Dilution	Western Blot: 1/500 - 1/2000. ELISA: 1/40000. Not yet tested in other applications.
Concentration	1 mg/ml
Purity	≥90%
Storage Stability	-20°C/1 year
Synonyms	NOC3L; AD24; C10orf117; FAD24; Nucleolar complex protein 3 homolog; NOC3 protein homolog; Factor for adipocyte differentiation 24; NOC3-like protein; Nucleolar complex-associated protein 3-like protein
Observed Band	93kD
Cell Pathway	Nucleus, nucleolus. Nucleus speckle.
Tissue Specificity	Expressed in colon, heart, kidney, liver, lung, placenta, skeletal muscle, small intestine, spleen and thymus.
Function	function:May be required for adipogenesis.,similarity:Belongs to the CBF/MAK21 family.,tissue specificity:Expressed in colon, heart, kidney, liver, lung, placenta, skeletal muscle, small intestine, spleen and thymus.,
Background	function:May be required for adipogenesis.,similarity:Belongs to the CBF/MAK21 family.,tissue specificity:Expressed in colon, heart, kidney, liver, lung, placenta, skeletal muscle, small intestine, spleen and thymus.,

Nanjing BYabscience technology Co.,Ltd



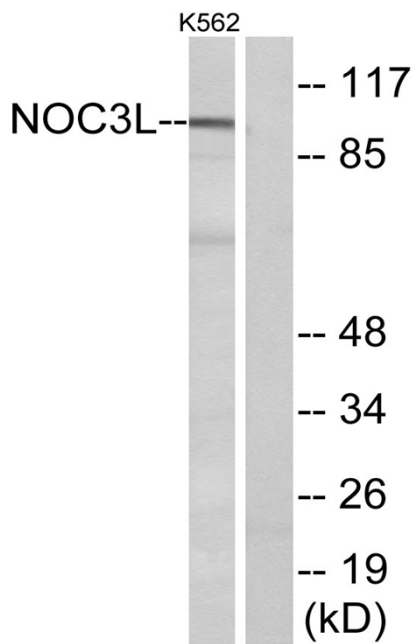
matters needing attention

Avoid repeated freezing and thawing!

Usage suggestions

This product can be used in immunological reaction related experiments. For more information, please consult technical personnel.

Products Images



Western blot analysis of lysates from K562 cells, using NOC3L Antibody. The lane on the right is blocked with the synthesized peptide.