



Podocan Polyclonal Antibody

Catalog No	BYab-04096
Isotype	IgG
Reactivity	Human;Rat;Mouse;
Applications	IHC;IF;ELISA
Gene Name	PODN
Protein Name	Podocan
Immunogen	Synthesized peptide derived from the C-terminal region of human Podocan.
Specificity	Podocan Polyclonal Antibody detects endogenous levels of Podocan protein.
Formulation	Liquid in PBS containing 50% glycerol, 0.5% BSA and 0.02% sodium azide.
Source	Polyclonal, Rabbit,IgG
Purification	The antibody was affinity-purified from rabbit antiserum by affinity-chromatography using epitope-specific immunogen.
Dilution	IHC: 1/100 - 1/300. ELISA: 1/40000.. IF 1:50-200
Concentration	1 mg/ml
Purity	≥90%
Storage Stability	-20°C/1 year
Synonyms	PODN; SLRR5A; Podocan
Observed Band	
Cell Pathway	[Isoform 1]: Secreted, extracellular space, extracellular matrix.; [Isoform 2]: Cytoplasm .; [Isoform 3]: Cytoplasm .; [Isoform 4]: Cytoplasm .
Tissue Specificity	Kidney, heart, liver, pancreas and vascular smooth muscle cells. Also detected in aortic intima (at protein level).
Function	PTM:N-glycosylated.,similarity:Belongs to the small leucine-rich proteoglycan (SLRP) family. Class V subfamily.,similarity:Contains 20 LRR (leucine-rich) repeats.,subunit:Binds to type I collagen.,tissue specificity:Kidney, heart, liver, pancreas and vascular smooth muscle cells.,
Background	The protein encoded by this gene is a member of the small leucine-rich repeat protein family and contains an amino terminal CX3CXCX7C cysteine-rich cluster followed by a leucine-rich repeat domain. Studies suggest that this protein could function to inhibit smooth muscle cell proliferation and migration following arterial injury. [provided by RefSeq, Jul 2016],

Nanjing BYabscience technology Co.,Ltd

网址: www.njbybio.com

官方热线: 025-5229-8998

监督电话: 15950492658



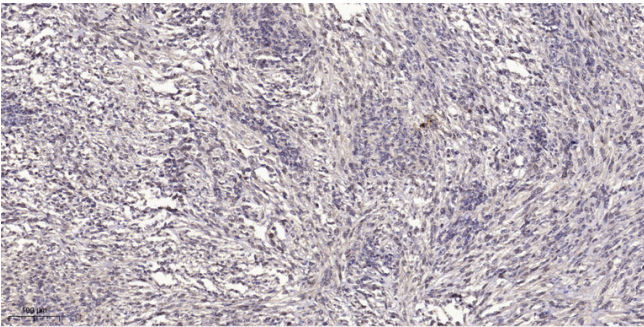
matters needing attention

Avoid repeated freezing and thawing!

Usage suggestions

This product can be used in immunological reaction related experiments. For more information, please consult technical personnel.

Products Images



Immunohistochemical analysis of paraffin-embedded human small intestinal carcinoma tissue. 1,primary Antibody was diluted at 1:200(4° overnight). 2, Sodium citrate pH 6.0 was used for antigen retrieval(>98° C,20min). 3,Secondary antibody was diluted at 1:200