



# Ribosomal Protein L10A Polyclonal Antibody

<b>Catalog No</b>	BYab-04126
<b>Isotype</b>	IgG
<b>Reactivity</b>	Human;Mouse;Rat
<b>Applications</b>	WB;IHC
<b>Gene Name</b>	RPL10A
<b>Protein Name</b>	60S ribosomal protein L10a
<b>Immunogen</b>	Synthesized peptide derived from Ribosomal Protein L10A . at AA range: 30-110
<b>Specificity</b>	Ribosomal Protein L10A Polyclonal Antibody detects endogenous levels of Ribosomal Protein L10A protein.
<b>Formulation</b>	Liquid in PBS containing 50% glycerol, 0.5% BSA and 0.02% sodium azide.
<b>Source</b>	Polyclonal, Rabbit,IgG
<b>Purification</b>	The antibody was affinity-purified from rabbit antiserum by affinity-chromatography using epitope-specific immunogen.
<b>Dilution</b>	WB 1:500-2000;IHC-p 1:50-300
<b>Concentration</b>	1 mg/ml
<b>Purity</b>	≥90%
<b>Storage Stability</b>	-20°C/1 year
<b>Synonyms</b>	RPL10A; NEDD6; 60S ribosomal protein L10a; CSA-19; Neural precursor cell expressed developmentally down-regulated protein 6; NEDD-6
<b>Observed Band</b>	25kD
<b>Cell Pathway</b>	nucleus,nucleolus,cytoplasm,cytosol,ribosome,focal adhesion,large ribosomal subunit,membrane,cytosolic large ribosomal subunit,extracellular exosome,
<b>Tissue Specificity</b>	Breast,Cervix,
<b>Function</b>	similarity:Belongs to the ribosomal protein L1P family.,
<b>Background</b>	Ribosomes, the organelles that catalyze protein synthesis, consist of a small 40S subunit and a large 60S subunit. Together these subunits are composed of 4 RNA species and approximately 80 structurally distinct proteins. This gene encodes a ribosomal protein that is a component of the 60S subunit. The protein belongs to the L1P family of ribosomal proteins. It is located in the cytoplasm. The expression of this gene is downregulated in the thymus by cyclosporin-A (CsA), an immunosuppressive drug. Studies in mice have shown that the expression of the ribosomal protein L10a gene is downregulated in neural precursor cells during

**Nanjing BYabscience technology Co.,Ltd**



development. This gene previously was referred to as NEDD6 (neural precursor cell expressed, developmentally downregulated 6), but it has been renamed RPL10A (ribosomal protein 10a). As is typical for genes encoding ribosomal proteins, there are multiple processed pseudogenes

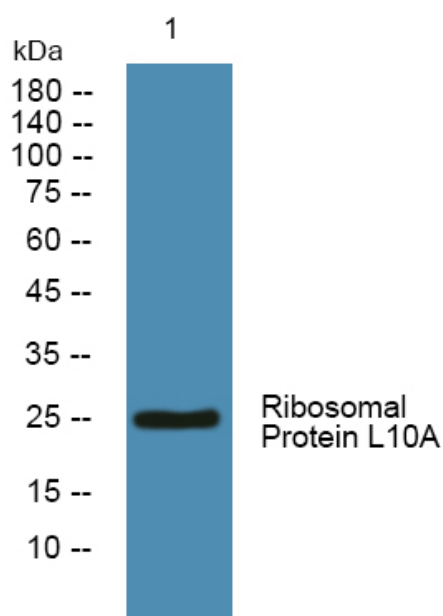
**matters needing attention**

Avoid repeated freezing and thawing!

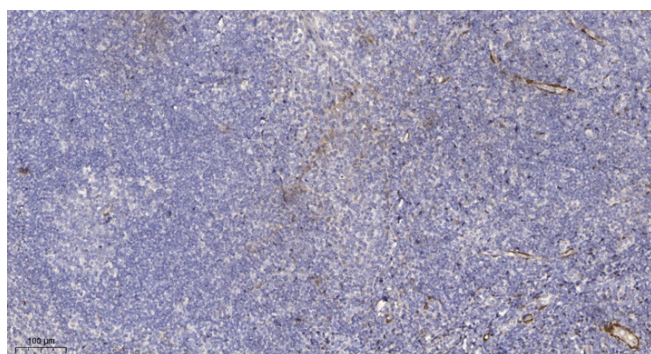
**Usage suggestions**

This product can be used in immunological reaction related experiments. For more information, please consult technical personnel.

## Products Images



Western blot analysis of lysates from KB cells, primary antibody was diluted at 1:1000, 4°over night



Immunohistochemical analysis of paraffin-embedded human tonsil. 1, Antibody was diluted at 1:200(4° overnight). 2, Tris-EDTA,pH9.0 was used for antigen retrieval. 3,Secondary antibody was diluted at 1:200(room temperature, 45min).

**Nanjing BYabs science technology Co.,Ltd**

网址: [www.njbybio.com](http://www.njbybio.com)

官方热线: 025-5229-8998

监督电话: 15950492658