



Ribosomal Protein L37 Polyclonal Antibody

Catalog No	BYab-04144
Isotype	IgG
Reactivity	Human;Mouse;Rat
Applications	IHC;IF;ELISA
Gene Name	RPL37
Protein Name	60S ribosomal protein L37
Immunogen	The antiserum was produced against synthesized peptide derived from human RPL37. AA range:21-70
Specificity	Ribosomal Protein L37 Polyclonal Antibody detects endogenous levels of Ribosomal Protein L37 protein.
Formulation	Liquid in PBS containing 50% glycerol, 0.5% BSA and 0.02% sodium azide.
Source	Polyclonal, Rabbit,IgG
Purification	The antibody was affinity-purified from rabbit antiserum by affinity-chromatography using epitope-specific immunogen.
Dilution	IHC: 1/100 - 1/300. ELISA: 1/10000.. IF 1:50-200
Concentration	1 mg/ml
Purity	≥90%
Storage Stability	-20°C/1 year
Synonyms	RPL37; 60S ribosomal protein L37; G1.16
Observed Band	
Cell Pathway	cytosol,ribosome,cytosolic large ribosomal subunit,
Tissue Specificity	Colon,Lung,Lymphoma,Ovary,Trachea,
Function	cofactor:Binds 1 zinc ion per subunit.,function:Binds to the 23S rRNA.,similarity:Belongs to the ribosomal protein L37e family.,
Background	Ribosomes, the organelles that catalyze protein synthesis, consist of a small 40S subunit and a large 60S subunit. Together these subunits are composed of 4 RNA species and approximately 80 structurally distinct proteins. This gene encodes a ribosomal protein that is a component of the 60S subunit. The protein belongs to the L37E family of ribosomal proteins. It is located in the cytoplasm. The protein contains a C2C2-type zinc finger-like motif. As is typical for genes encoding ribosomal proteins, there are multiple processed pseudogenes of this gene dispersed through the genome. [provided by RefSeq, Jul 2008],

Nanjing BYabscience technology Co.,Ltd



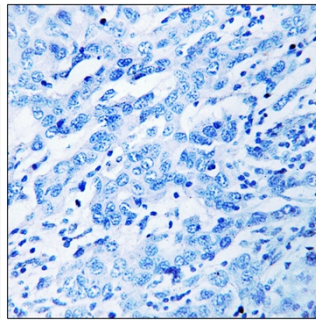
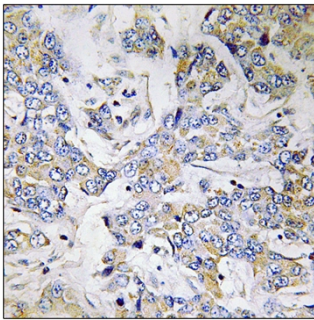
matters needing attention

Avoid repeated freezing and thawing!

Usage suggestions

This product can be used in immunological reaction related experiments. For more information, please consult technical personnel.

Products Images



Immunohistochemistry analysis of paraffin-embedded human breast carcinoma tissue, using RPL37 Antibody. The picture on the right is blocked with the synthesized peptide.