



Ribosomal Protein S3 Polyclonal Antibody

Catalog No	BYab-04167
Isotype	IgG
Reactivity	Human;Mouse;Rat
Applications	WB;IHC;IF;ELISA
Gene Name	RPS3
Protein Name	40S ribosomal protein S3
Immunogen	The antiserum was produced against synthesized peptide derived from human RPS3. AA range:171-220
Specificity	Ribosomal Protein S3 Polyclonal Antibody detects endogenous levels of Ribosomal Protein S3 protein.
Formulation	Liquid in PBS containing 50% glycerol, 0.5% BSA and 0.02% sodium azide.
Source	Polyclonal, Rabbit,IgG
Purification	The antibody was affinity-purified from rabbit antiserum by affinity-chromatography using epitope-specific immunogen.
Dilution	WB: 1/500 - 1/2000. IHC: 1/100 - 1/300. ELISA: 1/40000.. IF 1:50-200
Concentration	1 mg/ml
Purity	≥90%
Storage Stability	-20°C/1 year
Synonyms	RPS3; OK/SW-cl.26; 40S ribosomal protein S3
Observed Band	30kD
Cell Pathway	Cytoplasm . Nucleus . Nucleus, nucleolus . Mitochondrion inner membrane ; Peripheral membrane protein . Cytoplasm, cytoskeleton, spindle . In normal cells, located mainly in the cytoplasm with small amounts in the nucleus but translocates to the nucleus in cells undergoing apoptosis (By similarity). Nuclear translocation is induced by DNA damaging agents such as hydrogen peroxide (PubMed:17560175). Accumulates in the mitochondrion in response to increased ROS levels (PubMed:23911537). Localizes to the spindle during mitosis (PubMed:23131551). Localized in cytoplasmic mRNP granules containing untranslated mRNAs (PubMed:17289661). .
Tissue Specificity	Adrenal cortex,Cervix carcinoma,Colon adenocarcinoma,Epithelium,Liver,Lymph,Pituita
Function	similarity:Belongs to the ribosomal protein S3P family.,similarity:Contains 1 KH type-2 domain.,

Nanjing BYabs science technology Co.,Ltd



Background

Ribosomes, the organelles that catalyze protein synthesis, consist of a small 40S subunit and a large 60S subunit. Together these subunits are composed of 4 RNA species and approximately 80 structurally distinct proteins. This gene encodes a ribosomal protein that is a component of the 40S subunit, where it forms part of the domain where translation is initiated. The protein belongs to the S3P family of ribosomal proteins. Studies of the mouse and rat proteins have demonstrated that the protein has an extraribosomal role as an endonuclease involved in the repair of UV-induced DNA damage. The protein appears to be located in both the cytoplasm and nucleus but not in the nucleolus. Higher levels of expression of this gene in colon adenocarcinomas and adenomatous polyps compared to adjacent normal colonic mucosa have been observed. This gene is co-transcribed with the small nucleolar RNA genes U15A and

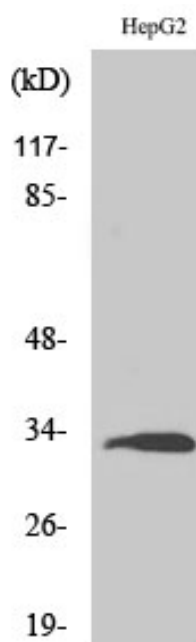
matters needing attention

Avoid repeated freezing and thawing!

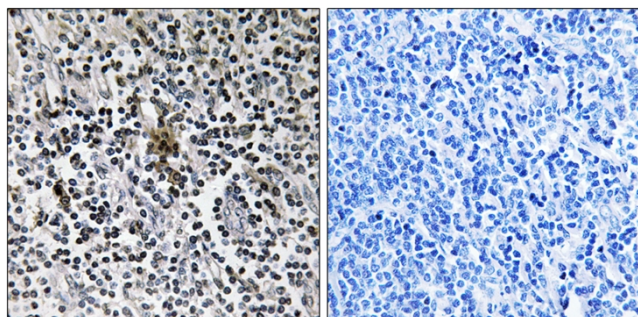
Usage suggestions

This product can be used in immunological reaction related experiments. For more information, please consult technical personnel.

Products Images

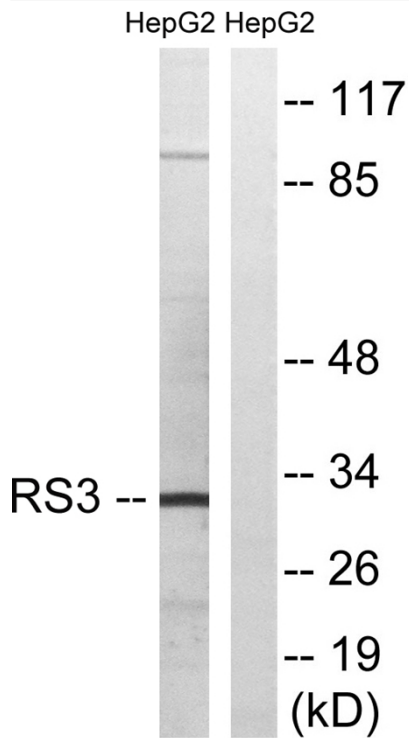


Western Blot analysis of various cells using Ribosomal Protein S3 Polyclonal Antibody

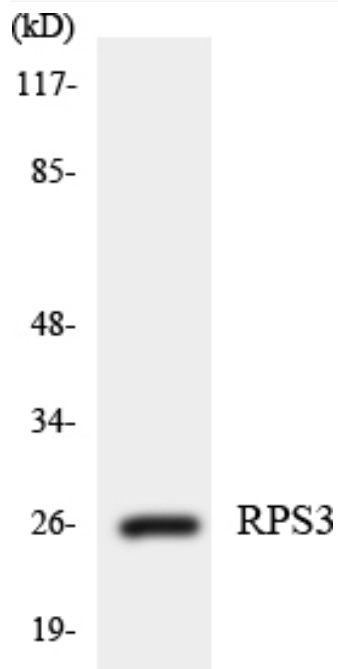


Immunohistochemistry analysis of paraffin-embedded human tonsil tissue, using RPS3 Antibody. The picture on the right is blocked with the synthesized peptide.

Nanjing BYabscience technology Co.,Ltd



Western blot analysis of lysates from HepG2 cells, using RPS3 Antibody. The lane on the right is blocked with the synthesized peptide.



Western blot analysis of the lysates from RAW264.7 cells using RPS3 antibody.