



Stlp1 Polyclonal Antibody

Catalog No	BYab-04229
Isotype	IgG
Reactivity	Human;Rat;Mouse;
Applications	WB;IHC
Gene Name	ELP2
Protein Name	Elongator complex protein 2
Immunogen	The antiserum was produced against synthesized peptide derived from human ELP2. AA range:771-820
Specificity	Stlp1 Polyclonal Antibody detects endogenous levels of Stlp1 protein.
Formulation	Liquid in PBS containing 50% glycerol, 0.5% BSA and 0.02% sodium azide.
Source	Polyclonal, Rabbit,IgG
Purification	The antibody was affinity-purified from rabbit antiserum by affinity-chromatography using epitope-specific immunogen.
Dilution	WB 1:500-2000;IHC-p 1:50-300
Concentration	1 mg/ml
Purity	≥90%
Storage Stability	-20°C/1 year
Synonyms	ELP2; STATIP1; Elongator complex protein 2; ELP2; SHINC-2; STAT3-interacting protein 1; StIP1
Observed Band	93kD
Cell Pathway	Cytoplasm . Nucleus .
Tissue Specificity	Hematopoietic,Liver,Ovary,Uterus,
Function	function:Acts as subunit of the RNA polymerase II elongator complex, which is a histone acetyltransferase component of the RNA polymerase II (Pol II) holoenzyme and is involved in transcriptional elongation. Elongator may play a role in chromatin remodeling and is involved in acetylation of histones H3 and probably H4.,function:Regulates the ligand-dependent activation of STAT3.,similarity:Belongs to the WD repeat ELP2 family.,similarity:Contains 14 WD repeats.,subunit:Component of the RNA polymerase II elongator complex (Elongator), which consists of IKBKAP/ELP1, STIP1/ELP2, ELP3, ELP4, and two yet unidentified proteins, p30 and p38. Elongator associates with the C-terminal domain (CTD) of Pol II largest subunit. Interacts with STAT3 and JAKs.,

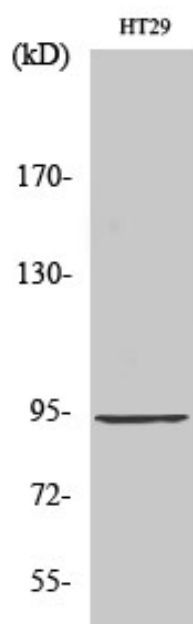
Nanjing BYabscience technology Co.,Ltd



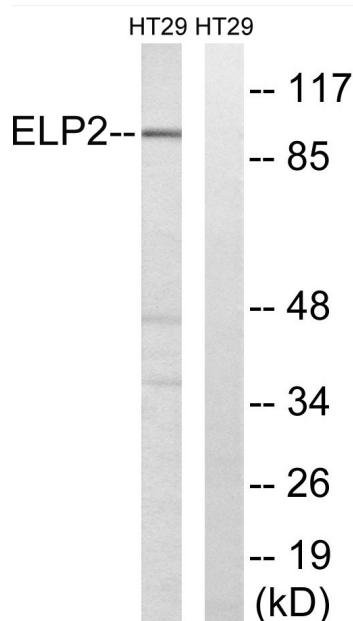
Background	The protein encoded by this gene is a core subunit of the elongator complex, a histone acetyltransferase complex that associates with RNA polymerase II. In addition to histone acetylation, the encoded protein effects transcriptional elongation and may help remodel chromatin. [provided by RefSeq, May 2016],
matters needing attention	Avoid repeated freezing and thawing!
Usage suggestions	This product can be used in immunological reaction related experiments. For more information, please consult technical personnel.



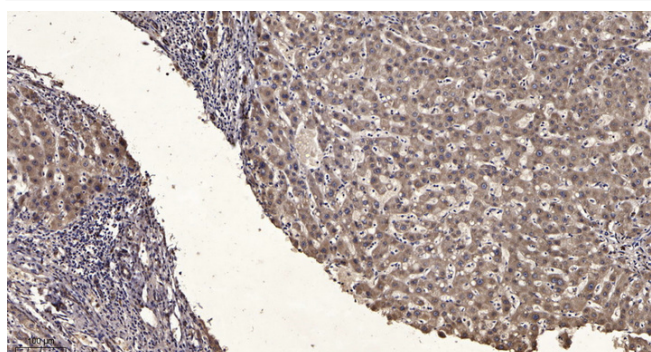
Products Images



Western Blot analysis of various cells using Stlp1 Polyclonal Antibody



Western blot analysis of lysates from HT-29 cells, using ELP2 Antibody. The lane on the right is blocked with the synthesized peptide.



Immunohistochemical analysis of paraffin-embedded human liver cancer. 1, Antibody was diluted at 1:200(4° overnight). 2, Tris-EDTA,pH9.0 was used for antigen retrieval. 3,Secondary antibody was diluted at 1:200(room temperature, 45min).

Nanjing BYabs science technology Co.,Ltd



Nanjing BYabscience technology Co.,Ltd

网址: www.njbybio.com

官方热线: 025-5229-8998

监督电话: 15950492658