



# Syndecan-4 Polyclonal Antibody

<b>Catalog No</b>	BYab-04232
<b>Isotype</b>	IgG
<b>Reactivity</b>	Human;Mouse;Rat
<b>Applications</b>	WB;IHC;IF;ELISA
<b>Gene Name</b>	SDC4
<b>Protein Name</b>	Syndecan-4
<b>Immunogen</b>	The antiserum was produced against synthesized peptide derived from human Syndecan4. AA range:145-194
<b>Specificity</b>	Syndecan-4 Polyclonal Antibody detects endogenous levels of Syndecan-4 protein.
<b>Formulation</b>	Liquid in PBS containing 50% glycerol, 0.5% BSA and 0.02% sodium azide.
<b>Source</b>	Polyclonal, Rabbit,IgG
<b>Purification</b>	The antibody was affinity-purified from rabbit antiserum by affinity-chromatography using epitope-specific immunogen.
<b>Dilution</b>	Western Blot: 1/500 - 1/2000. Immunohistochemistry: 1/100 - 1/300. Immunofluorescence: 1/200 - 1/1000. ELISA: 1/40000. Not yet tested in other applications.
<b>Concentration</b>	1 mg/ml
<b>Purity</b>	≥90%
<b>Storage Stability</b>	-20°C/1 year
<b>Synonyms</b>	SDC4; Syndecan-4; SYND4; Amphiglycan; Ryudocan core protein
<b>Observed Band</b>	22kD
<b>Cell Pathway</b>	[Isoform 1]: Membrane ; Single-pass type I membrane protein . Secreted . Shedding of the ectodomain produces a soluble form. .; [Isoform 2]: Secreted.
<b>Tissue Specificity</b>	Expressed in epithelial and fibroblastic cells.
<b>Function</b>	function:Cell surface proteoglycan that bears heparan sulfate.,function:Cell surface proteoglycan.,similarity:Belongs to the syndecan proteoglycan family.,subunit:Homodimer. Interacts with CDCP1, with GIPC PDZ domain and with NUDT16L1/SDOS (By similarity). Interacts with SDCBP.,tissue specificity:Expressed in epithelial and fibroblastic cells.,
<b>Background</b>	The protein encoded by this gene is a transmembrane (type I) heparan sulfate proteoglycan that functions as a receptor in intracellular signaling. The encoded protein is found as a homodimer and is a member of the syndecan proteoglycan family. This gene is found on chromosome 20, while a pseudogene has been

**Nanjing BYabscience technology Co.,Ltd**



found on chromosome 22. [provided by RefSeq, Jul 2008],

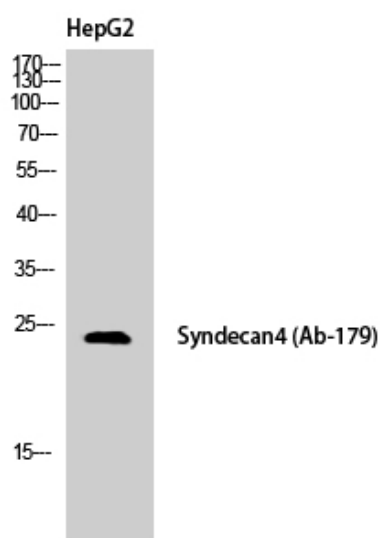
**matters needing attention**

Avoid repeated freezing and thawing!

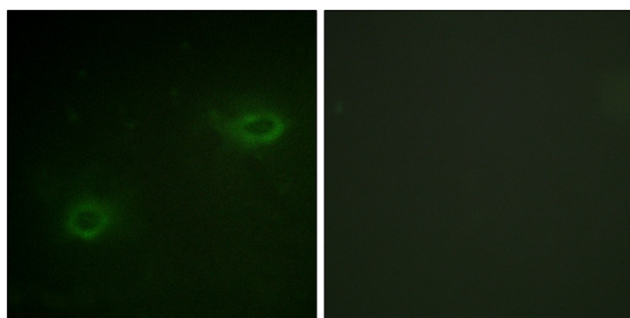
**Usage suggestions**

This product can be used in immunological reaction related experiments. For more information, please consult technical personnel.

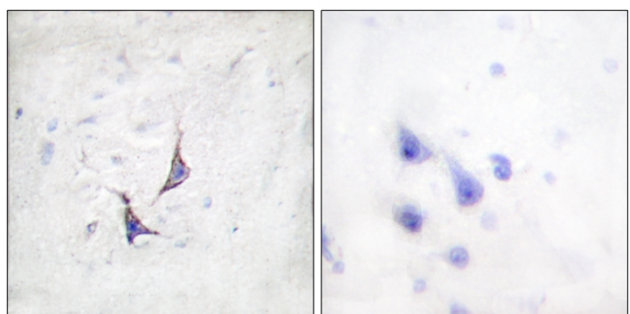
## Products Images



Western Blot analysis of HepG2 cells using Syndecan-4 Polyclonal Antibody



Immunofluorescence analysis of HeLa cells, using Syndecan4 Antibody. The picture on the right is blocked with the synthesized peptide.



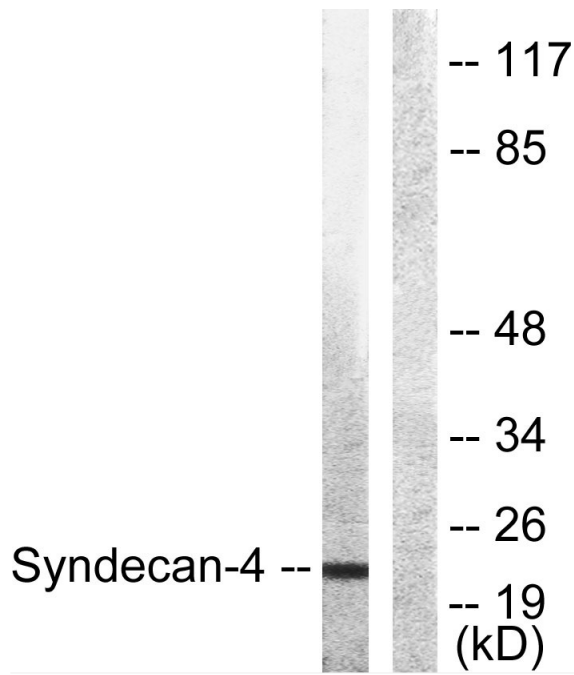
Immunohistochemistry analysis of paraffin-embedded human brain tissue, using Syndecan4 Antibody. The picture on the right is blocked with the synthesized peptide.

**Nanjing BYabs science technology Co.,Ltd**

网址: [www.njbybio.com](http://www.njbybio.com)

官方热线: 025-5229-8998

监督电话: 15950492658



Western blot analysis of lysates from HepG2 cells, using Syndecan4 Antibody. The lane on the right is blocked with the synthesized peptide.