



TCFL5 Polyclonal Antibody

Catalog No	BYab-04239
Isotype	IgG
Reactivity	Human;Mouse
Applications	WB;IHC;IF;ELISA
Gene Name	TCFL5
Protein Name	Transcription factor-like 5 protein
Immunogen	The antiserum was produced against synthesized peptide derived from human TCFL5. AA range:311-360
Specificity	TCFL5 Polyclonal Antibody detects endogenous levels of TCFL5 protein.
Formulation	Liquid in PBS containing 50% glycerol, 0.5% BSA and 0.02% sodium azide.
Source	Polyclonal, Rabbit,IgG
Purification	The antibody was affinity-purified from rabbit antiserum by affinity-chromatography using epitope-specific immunogen.
Dilution	WB: 1/500 - 1/2000. IHC: 1/100 - 1/300. ELISA: 1/20000.. IF 1:50-200
Concentration	1 mg/ml
Purity	≥90%
Storage Stability	-20°C/1 year
Synonyms	TCFL5; CHA; E2BP1; Transcription factor-like 5 protein; Cha transcription factor; HPV-16 E2-binding protein 1; E2BP-1
Observed Band	48kD
Cell Pathway	Nucleus .
Tissue Specificity	Isoform 3 is testis specific. Isoform 2 is pancreas specific.
Function	developmental stage:Isoform 3 is specifically expressed in primary spermatocytes at the pachytene stage, but not those at leptotema stage. Not expressed in other testicular cells, including spermatogonia located in the basal compartment of the seminiferous tubule or spermatids.,disease:Antibodies against TCFL5 are present in sera from patients with Chagas' disease, an autoimmune disease caused by Trypanosoma cruzi. Two different epitopes that mimic Trypanosoma cruzi antigens have been identified: R1 and R3 epitopes, which are recognized by T- and B-cells, respectively.,function:Putative transcription factor. Isoform 3 may play a role in early spermatogenesis.,similarity:Contains 1 basic helix-loop-helix (bHLH) domain.,subunit:Efficient DNA binding requires dimerization with another

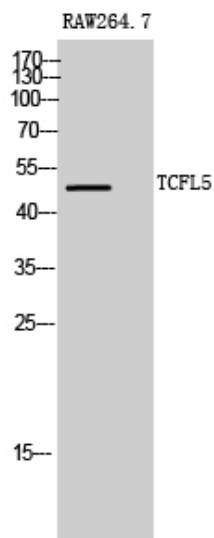
Nanjing BYabscience technology Co.,Ltd



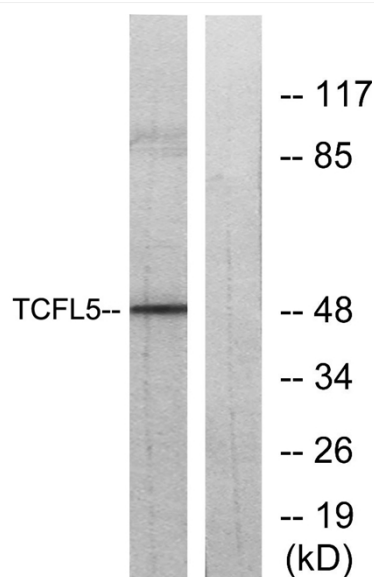
	bHLH protein.,tissue specificity:Isoform 3 is testis specific. Isoform 2 is pancreas specific.,
Background	developmental stage:Isoform 3 is specifically expressed in primary spermatocytes at the pachytene stage, but not those at leptotema stage. Not expressed in other testicular cells, including spermatogonia located in the basal compartment of the seminiferous tubule or spermatids.,disease:Antibodies against TCFL5 are present in sera from patients with Chagas' disease, an autoimmune disease caused by Trypanosoma cruzi. Two different epitopes that mimic Trypanosoma cruzi antigens have been identified: R1 and R3 epitopes, which are recognized by T- and B-cells, respectively.,function:Putative transcription factor. Isoform 3 may play a role in early spermatogenesis.,similarity:Contains 1 basic helix-loop-helix (bHLH) domain.,subunit:Efficient DNA binding requires dimerization with another bHLH protein.,tissue specificity:Isoform 3 is testis specific. Isoform 2 is pancreas specific.,
matters needing attention	Avoid repeated freezing and thawing!
Usage suggestions	This product can be used in immunological reaction related experiments. For more information, please consult technical personnel.



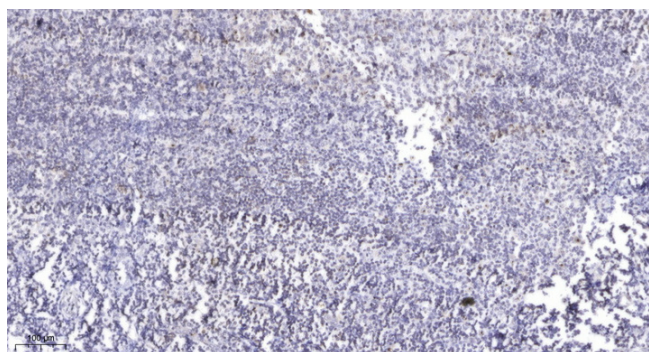
Products Images



Western Blot analysis of RAW264.7 cells using TCFL5 Polyclonal Antibody cells nucleus extracted by Minute TM Cytoplasmic and Nuclear Fractionation kit (SC-003, Invent biotech, MN, USA).



Western blot analysis of lysates from RAW264.7 cells, using TCFL5 Antibody. The lane on the right is blocked with the synthesized peptide.



Immunohistochemical analysis of paraffin-embedded human tonsil. 1, Antibody was diluted at 1:200(4° overnight). 2, Tris-EDTA, pH9.0 was used for antigen retrieval. 3, Secondary antibody was diluted at 1:200(room temperature, 45min).

Nanjing BYabs science technology Co.,Ltd

网址: www.njbybio.com

官方热线: 025-5229-8998

监督电话: 15950492658