



# TIS11D Polyclonal Antibody

Catalog No	BYab-04246
Isotype	IgG
Reactivity	Human;Mouse
Applications	WB;IHC;IF;ELISA
Gene Name	ZFP36L2
Protein Name	Zinc finger protein 36 C3H1 type-like 2
Immunogen	The antiserum was produced against synthesized peptide derived from human TISD. AA range:207-256
Specificity	TIS11D Polyclonal Antibody detects endogenous levels of TIS11D protein.
Formulation	Liquid in PBS containing 50% glycerol, 0.5% BSA and 0.02% sodium azide.
Source	Polyclonal, Rabbit,IgG
Purification	The antibody was affinity-purified from rabbit antiserum by affinity-chromatography using epitope-specific immunogen.
Dilution	WB: 1/500 - 1/2000. IHC: 1/100 - 1/300. ELISA: 1/20000.. IF 1:50-200
Concentration	1 mg/ml
Purity	≥90%
Storage Stability	-20°C/1 year
Synonyms	ZFP36L2; BRF2; ERF2; RNF162C; TIS11D; Zinc finger protein 36; C3H1 type-like 2; ZFP36-like 2; Butyrate response factor 2; EGF-response factor 2; ERF-2; Protein TIS11D
Observed Band	55kD
Cell Pathway	Nucleus . Cytoplasm . Shuttles between the nucleus and the cytoplasm in a XPO1/CRM1-dependent manner. .
Tissue Specificity	Expressed mainly in the basal epidermal layer, weakly in the suprabasal epidermal layers (PubMed:27182009). Expressed in epidermal keratinocytes (at protein level) (PubMed:27182009).
Function	function:Probable regulatory protein involved in regulating the response to growth factors. RNA-binding protein that binds to 5'UUUUAUUUUU-3' core sequence. Binds to the class II AU-rich element (ARE) in the 3'-UTR of target mRNAs and promotes their deadenylation and degradation.,similarity:Contains 2 C3H1-type zinc fingers.,
Background	This gene is a member of the TIS11 family of early response genes. Family members are induced by various agonists such as the phorbol ester TPA and the

Nanjing BYabscience technology Co.,Ltd



polypeptide mitogen EGF. The encoded protein contains a distinguishing putative zinc finger domain with a repeating cys-his motif. This putative nuclear transcription factor most likely functions in regulating the response to growth factors. [provided by RefSeq, Jul 2008],

**matters needing attention**

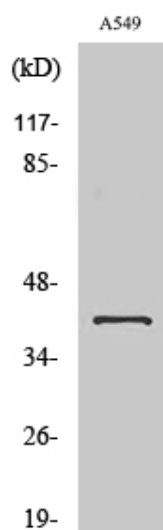
Avoid repeated freezing and thawing!

**Usage suggestions**

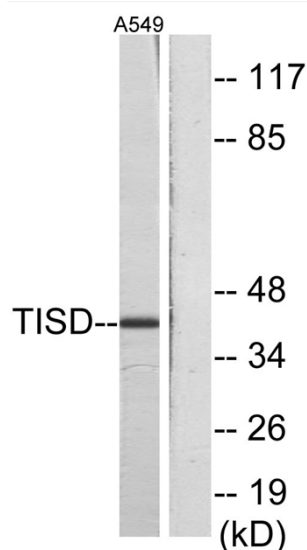
This product can be used in immunological reaction related experiments. For more information, please consult technical personnel.



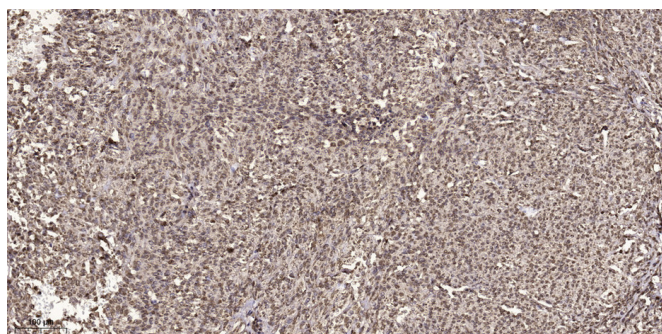
## Products Images



Western Blot analysis of various cells using TIS11D Polyclonal Antibody. Secondary antibody(catalog#:RS0002) was diluted at 1:20000



Western blot analysis of lysates from A549 cells, using TISD Antibody. The lane on the right is blocked with the synthesized peptide.



Immunohistochemical analysis of paraffin-embedded human small intestinal carcinoma tissue. 1,primary Antibody was diluted at 1:200(4° overnight). 2, Sodium citrate pH 6.0 was used for antigen retrieval(>98° C,20min). 3,Secondary antibody was diluted at 1:200

Nanjing BYabscience technology Co.,Ltd

网址: [www.njbybio.com](http://www.njbybio.com)

官方热线: 025-5229-8998

监督电话: 15950492658