



ZP2 Polyclonal Antibody

Catalog No	BYab-04283
Isotype	IgG
Reactivity	Human;Rat;Mouse;
Applications	IHC;IF;ELISA
Gene Name	ZP2
Protein Name	Zona pellucida sperm-binding protein 2
Immunogen	Synthesized peptide derived from the Internal region of human ZP2.
Specificity	ZP2 Polyclonal Antibody detects endogenous levels of ZP2 protein.
Formulation	Liquid in PBS containing 50% glycerol, 0.5% BSA and 0.02% sodium azide.
Source	Polyclonal, Rabbit,IgG
Purification	The antibody was affinity-purified from rabbit antiserum by affinity-chromatography using epitope-specific immunogen.
Dilution	IHC: 1/100 - 1/300. ELISA: 1/40000.. IF 1:50-200
Concentration	1 mg/ml
Purity	≥90%
Storage Stability	-20°C/1 year
Synonyms	ZP2; ZPA; Zona pellucida sperm-binding protein 2; Zona pellucida glycoprotein 2; Zp-2; Zona pellucida protein A
Observed Band	
Cell Pathway	[Processed zona pellucida sperm-binding protein 2]: Zona pellucida .; Cell membrane ; Single-pass type I membrane protein .
Tissue Specificity	Expressed in oocytes(at protein level).
Function	developmental stage:Expressed during the 2-week growth phase of oogenesis, prior to ovulation.,domain:The ZP domain is involved in the polymerization of the ZP proteins to form the zona pellucida.,function:The mammalian zona pellucida, which mediates species-specific sperm binding, induction of the acrosome reaction and prevents post-fertilization polyspermy, is composed of three to four glycoproteins, ZP1, ZP2, ZP3, and ZP4. ZP2 may act as a secondary sperm receptor.,PTM:O-glycosylated; contains sulfate-substituted glycans.,PTM:Proteolytically cleaved before the transmembrane segment to yield the secreted ectodomain incorporated in the zona pellucida.,PTM:Proteolytically cleaved in the N-terminal part after fertilization, yielding a N-terminal peptide of about 30 kDa which remains covalently attached to the C-terminal peptide via

Nanjing BYabscience technology Co.,Ltd



disulfide bond(s). This cleavage may play an important ro

Background

The zona pellucida is an extracellular matrix that surrounds the oocyte and early embryo. It is composed of three glycoproteins with various functions during fertilization and preimplantation development. The glycosylated mature peptide is one of the structural components of the zona pellucida and functions in secondary binding and penetration of acrosome-reacted spermatozoa. Female mice lacking this gene do not form a stable zona matrix and are sterile. Alternative splicing results in multiple transcript variants. [provided by RefSeq, Feb 2014],

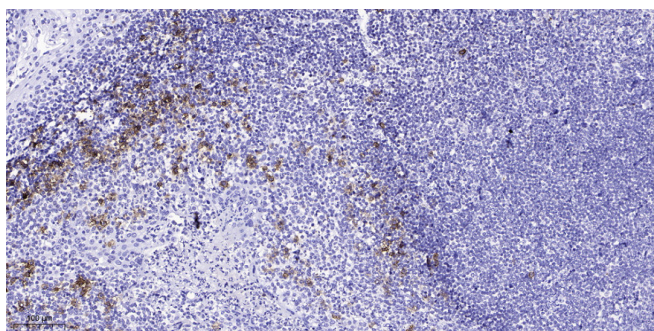
matters needing attention

Avoid repeated freezing and thawing!

Usage suggestions

This product can be used in immunological reaction related experiments. For more information, please consult technical personnel.

Products Images



Immunohistochemical analysis of paraffin-embedded human tonsil. 1, Antibody was diluted at 1:200(4° overnight). 2, Tris-EDTA,pH9.0 was used for antigen retrieval. 3,Secondary antibody was diluted at 1:200(room temperature, 45min).

Nanjing BYabs science technology Co.,Ltd

网址: www.njbybio.com

官方热线: 025-5229-8998

监督电话: 15950492658