



# GGT1 Polyclonal Antibody

<b>Catalog No</b>	BYab-04326
<b>Isotype</b>	IgG
<b>Reactivity</b>	Human;Rat;Mouse;
<b>Applications</b>	WB;IHC;IF;ELISA
<b>Gene Name</b>	GGT1
<b>Protein Name</b>	Gamma-glutamyltranspeptidase 1
<b>Immunogen</b>	The antiserum was produced against synthesized peptide derived from the N-terminal region of human GGT1. AA range:21-70
<b>Specificity</b>	GGT1 Polyclonal Antibody detects endogenous levels of GGT1 protein.
<b>Formulation</b>	Liquid in PBS containing 50% glycerol, 0.5% BSA and 0.02% sodium azide.
<b>Source</b>	Polyclonal, Rabbit,IgG
<b>Purification</b>	The antibody was affinity-purified from rabbit antiserum by affinity-chromatography using epitope-specific immunogen.
<b>Dilution</b>	WB: 1/500 - 1/2000. IHC-p: 1:100-300 ELISA: 1/20000.. IF 1:50-200
<b>Concentration</b>	1 mg/ml
<b>Purity</b>	≥90%
<b>Storage Stability</b>	-20°C/1 year
<b>Synonyms</b>	GGT1; GGT; Gamma-glutamyltranspeptidase 1; GGT 1; Gamma-glutamyltransferase 1; Glutathione hydrolase 1; Leukotriene-C4 hydrolase; CD224
<b>Observed Band</b>	61kD
<b>Cell Pathway</b>	Cell membrane ; Single-pass type II membrane protein .
<b>Tissue Specificity</b>	Detected in fetal and adult kidney and liver, adult pancreas, stomach, intestine, placenta and lung. There are several other tissue-specific forms that arise from alternative promoter usage but that produce the same protein.; [Isoform 3]: Lung-specific.
<b>Function</b>	catalytic activity:(5-L-glutamyl)-peptide + an amino acid = peptide + 5-L-glutamyl amino acid.;disease:Defects in GGT1 are a cause of glutathionuria [MIM:231950]; also known as gamma-glutamyltranspeptidase deficiency. It is an autosomal recessive disease.;function:Initiates extracellular glutathione (GSH) breakdown, provides cells with a local cysteine supply and contributes to maintain intracellular GSH level. It is part of the cell antioxidant defense mechanism. Catalyzes the transfer of the glutamyl moiety of glutathione to amino acids and dipeptide

**Nanjing BYabs science technology Co.,Ltd**



acceptors. Alternatively, glutathione can be hydrolyzed to give Cys-Gly and gamma glutamate. Isoform 3 seems to be inactive.,function:Initiates extracellular glutathione (GSH) breakdown; catalyzes the transfer of the glutamyl moiety of glutathione to amino acids and dipeptide acceptors.,miscellaneous:Corresponds to the light chain of other

#### Background

The enzyme encoded by this gene is a type I gamma-glutamyltransferase that catalyzes the transfer of the glutamyl moiety of glutathione to a variety of amino acids and dipeptide acceptors. The enzyme is composed of a heavy chain and a light chain, which are derived from a single precursor protein. It is expressed in tissues involved in absorption and secretion and may contribute to the etiology of diabetes and other metabolic disorders. Multiple alternatively spliced variants have been identified. There are a number of related genes present on chromosomes 20 and 22, and putative pseudogenes for this gene on chromosomes 2, 13, and 22. [provided by RefSeq, Jan 2014],

#### matters needing attention

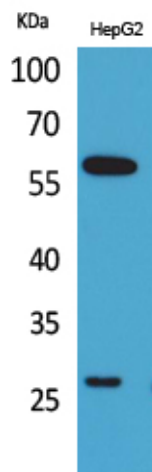
Avoid repeated freezing and thawing!

#### Usage suggestions

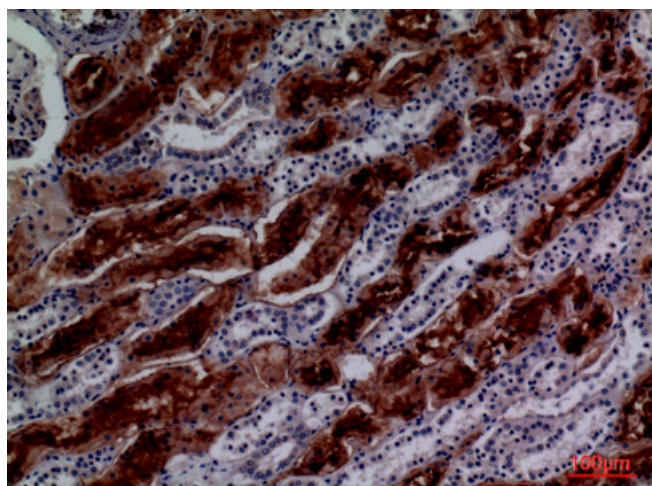
This product can be used in immunological reaction related experiments. For more information, please consult technical personnel.



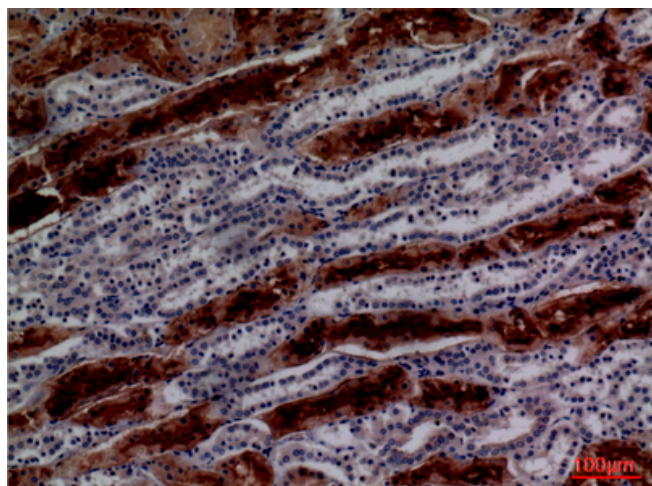
## Products Images



Western Blot analysis of HepG2 cells using GGT1 Polyclonal Antibody. Secondary antibody(catalog#:RS0002) was diluted at 1:20000



Immunohistochemical analysis of paraffin-embedded human-kidney, antibody was diluted at 1:100



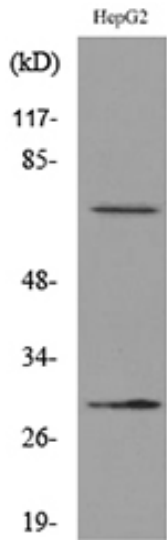
Immunohistochemical analysis of paraffin-embedded human-kidney, antibody was diluted at 1:100

**Nanjing BYabs science technology Co.,Ltd**

网址: [www.njbybio.com](http://www.njbybio.com)

官方热线: 025-5229-8998

监督电话: 15950492658



Western blot analysis of lysate from HepG2 cells, using GGT1 Antibody.