



# MPO Polyclonal Antibody

|                    |   |
|--------------------|---|
| Catalog No         | BYab-04329  |
| Isotype            | IgG   |
| Reactivity         | Human;Mouse;Rat   |
| Applications       | WB;IHC;IF;ELISA   |
| Gene Name          | MPO   |
| Protein Name       | Myeloperoxidase   |
| Immunogen          | The antiserum was produced against synthesized peptide derived from the N-terminal region of human MPO. AA range:41-90  |
| Specificity        | MPO Polyclonal Antibody detects endogenous levels of MPO protein.   |
| Formulation        | Liquid in PBS containing 50% glycerol, 0.5% BSA and 0.02% sodium azide.   |
| Source             | Polyclonal, Rabbit,IgG  |
| Purification       | The antibody was affinity-purified from rabbit antiserum by affinity-chromatography using epitope-specific immunogen.   |
| Dilution           | IHC-p: 100-300.WB: 1/500 - 1/2000. ELISA: 1/20000.. IF 1:50-200   |
| Concentration      | 1 mg/ml   |
| Purity             | ≥90%  |
| Storage Stability  | -20°C/1 year  |
| Synonyms           | MPO; Myeloperoxidase; MPO   |
| Observed Band      | 85kD  |
| Cell Pathway       | Lysosome.   |
| Tissue Specificity | Leukemia,Leukocyte,Liver,Plasma,Saliva,   |
| Function           | catalytic activity:Cl(-) + H(2)O(2) = HOCl + 2 H(2)O.,catalytic activity:Donor + H(2)O(2) = oxidized donor + 2 H(2)O.,cofactor:Binds 1 calcium ion per heterodimer.,cofactor:Binds 1 heme B (iron-protoporphyrin IX) group covalently per heterodimer.,disease:Defects in MPO are the cause of myeloperoxidase deficiency (MPD) [MIM:254600]. MPD is an autosomal recessive defect that results in disseminated candidiasis.,function:Part of the host defense system of polymorphonuclear leukocytes. It is responsible for microbicidal activity against a wide range of organisms. In the stimulated PMN, MPO catalyzes the production of hypohalous acids, primarily hypochlorous acid in physiologic situations, and other toxic intermediates that greatly enhance PMN microbicidal activity.,online information:MPO mutation db,online information:Myeloperoxidase |

Nanjing BYabscience technology Co.,Ltd



entry,similarity:Belongs to the peroxidase family. XPO sub

## Background

Myeloperoxidase (MPO) is a heme protein synthesized during myeloid differentiation that constitutes the major component of neutrophil azurophilic granules. Produced as a single chain precursor, myeloperoxidase is subsequently cleaved into a light and heavy chain. The mature myeloperoxidase is a tetramer composed of 2 light chains and 2 heavy chains. This enzyme produces hypohalous acids central to the microbicidal activity of neutrophils. [provided by RefSeq, Nov 2014],

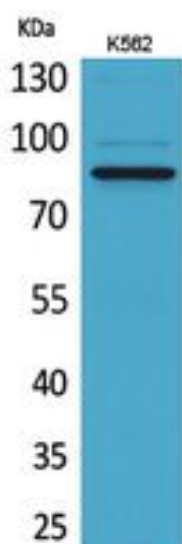
## matters needing attention

Avoid repeated freezing and thawing!

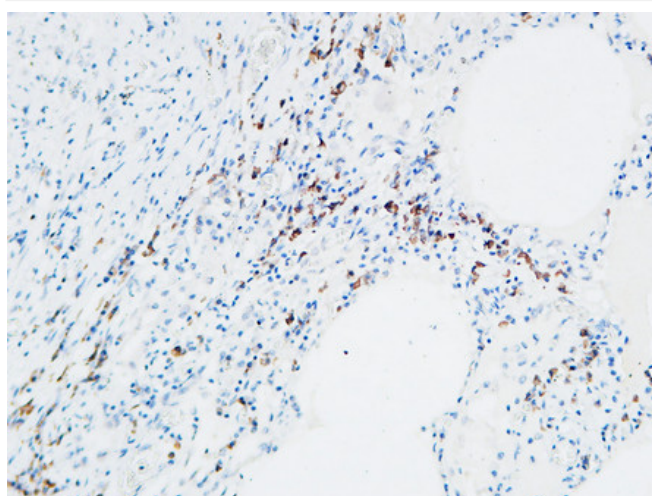
## Usage suggestions

This product can be used in immunological reaction related experiments. For more information, please consult technical personnel.

## Products Images

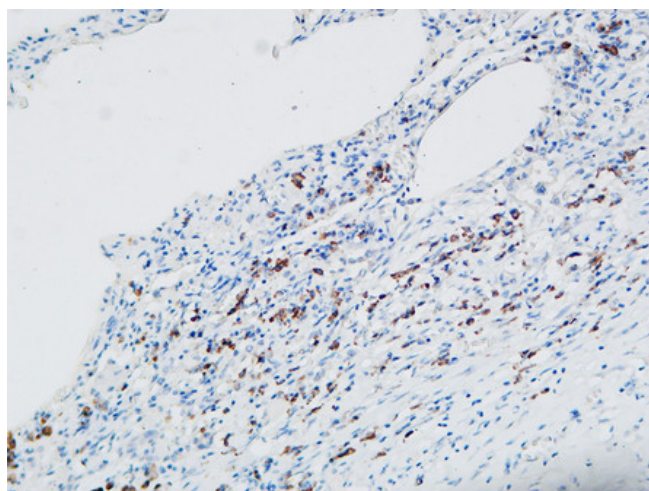


Western Blot analysis of K562 cells using MPO Polyclonal Antibody. Secondary antibody(catalog#:RS0002) was diluted at 1:20000

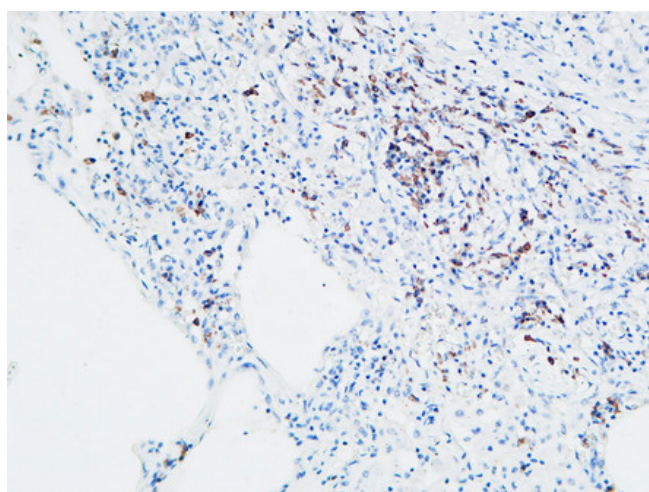


Immunohistochemical analysis of paraffin-embedded Human lung. 1, Antibody was diluted at 1:100(4° overnight). 2, High-pressure and temperature EDTA, pH8.0 was used for antigen retrieval. 3,Secondary antibody was diluted at 1:200(room temperature, 30min).

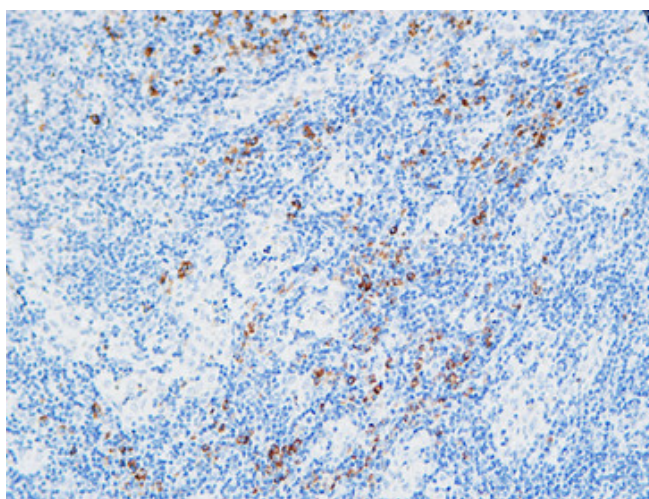
**Nanjing BYabs science technology Co.,Ltd**



Immunohistochemical analysis of paraffin-embedded Human lung. 1, Antibody was diluted at 1:100(4° overnight). 2, High-pressure and temperature EDTA, pH8.0 was used for antigen retrieval. 3, Secondary antibody was diluted at 1:200(room temperature, 30min).



Immunohistochemical analysis of paraffin-embedded Human lung. 1, Antibody was diluted at 1:100(4° overnight). 2, High-pressure and temperature EDTA, pH8.0 was used for antigen retrieval. 3, Secondary antibody was diluted at 1:200(room temperature, 30min).



Immunohistochemical analysis of paraffin-embedded Human lymphoma. 1, Antibody was diluted at 1:100(4° overnight). 2, High-pressure and temperature EDTA, pH8.0 was used for antigen retrieval. 3, Secondary antibody was diluted at 1:200(room temperature, 30min).