



DRA Polyclonal Antibody

Catalog No	BYab-04336
Isotype	IgG
Reactivity	Human;Mouse;Rat
Applications	WB;ELISA
Gene Name	SLC26A3
Protein Name	Chloride anion exchanger
Immunogen	Synthesized peptide derived from the C-terminal region of human DRA.
Specificity	DRA Polyclonal Antibody detects endogenous levels of DRA protein.
Formulation	Liquid in PBS containing 50% glycerol, 0.5% BSA and 0.02% sodium azide.
Source	Polyclonal, Rabbit,IgG
Purification	The antibody was affinity-purified from rabbit antiserum by affinity-chromatography using epitope-specific immunogen.
Dilution	Western Blot: 1/500 - 1/2000. ELISA: 1/20000. Not yet tested in other applications.
Concentration	1 mg/ml
Purity	≥90%
Storage Stability	-20°C/1 year
Synonyms	SLC26A3; DRA; Chloride anion exchanger; Down-regulated in adenoma; Protein DRA; Solute carrier family 26 member 3
Observed Band	84kD
Cell Pathway	Apical cell membrane ; Multi-pass membrane protein . Membrane ; Multi-pass membrane protein . Localized in sperm membranes. Midpiece of sperm tail. Colocalizes with CFTR at the midpiece of sperm tail (By similarity). .
Tissue Specificity	Colon,Lung,Rectum tumor,
Function	developmental stage:Expression is significantly decreased in adenomas (polyps) and adenocarcinomas of the colon.,disease:Defects in SLC26A3 are the cause of congenital chloride diarrhea (CLD) [MIM:214700]. CLD is a disease characterized by voluminous watery stools containing an excess of chloride. The children with this disease are often premature.,function:Chloride/bicarbonate exchanger. Involved in absorption of in the colon. Helps mediate electrolyte and fluid absorption.,PTM:Phosphorylated upon DNA damage, probably by ATM or ATR.,similarity:Belongs to the SLC26A/SulP transporter (TC 2.A.53) family.,similarity:Contains 1 STAS domain.,subunit:Interacts with PDZK1.,

Nanjing BYabscience technology Co.,Ltd



Background

The protein encoded by this gene is a transmembrane glycoprotein that transports chloride ions across the cell membrane in exchange for bicarbonate ions. It is localized to the mucosa of the lower intestinal tract, particularly to the apical membrane of columnar epithelium and some goblet cells. The protein is essential for intestinal chloride absorption, and mutations in this gene have been associated with congenital chloride diarrhea. [provided by RefSeq, Oct 2008],

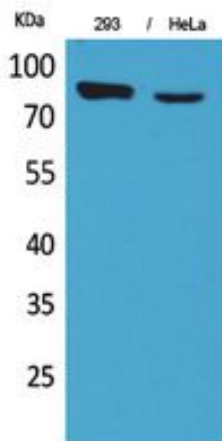
matters needing attention

Avoid repeated freezing and thawing!

Usage suggestions

This product can be used in immunological reaction related experiments. For more information, please consult technical personnel.

Products Images



Western Blot analysis of 293, HeLa cells using DRA Polyclonal Antibody. Secondary antibody(catalog#:RS0002) was diluted at 1:20000

Nanjing BYabscience technology Co.,Ltd

网址: www.njbybio.com

官方热线: 025-5229-8998

监督电话: 15950492658