



# MRP-L35 Polyclonal Antibody

<b>Catalog No</b>	BYab-04346
<b>Isotype</b>	IgG
<b>Reactivity</b>	Human;Mouse
<b>Applications</b>	WB;IHC
<b>Gene Name</b>	MRPL35
<b>Protein Name</b>	39S ribosomal protein L35 mitochondrial
<b>Immunogen</b>	Synthesized peptide derived from MRP-L35 . at AA range: 80-160
<b>Specificity</b>	MRP-L35 Polyclonal Antibody detects endogenous levels of MRP-L35 protein.
<b>Formulation</b>	Liquid in PBS containing 50% glycerol, 0.5% BSA and 0.02% sodium azide.
<b>Source</b>	Polyclonal, Rabbit,IgG
<b>Purification</b>	The antibody was affinity-purified from rabbit antiserum by affinity-chromatography using epitope-specific immunogen.
<b>Dilution</b>	WB 1:500-2000;IHC-p 1:50-300
<b>Concentration</b>	1 mg/ml
<b>Purity</b>	≥90%
<b>Storage Stability</b>	-20°C/1 year
<b>Synonyms</b>	MRPL35; BM-007; 39S ribosomal protein L35, mitochondrial; L35mt; MRP-L35
<b>Observed Band</b>	21kD
<b>Cell Pathway</b>	Mitochondrion .
<b>Tissue Specificity</b>	Bone marrow,Liver,Stomach,
<b>Function</b>	similarity:Belongs to the ribosomal protein L35P family.,
<b>Background</b>	Mammalian mitochondrial ribosomal proteins are encoded by nuclear genes and help in protein synthesis within the mitochondrion. Mitochondrial ribosomes (mitoribosomes) consist of a small 28S subunit and a large 39S subunit. They have an estimated 75% protein to rRNA composition compared to prokaryotic ribosomes, where this ratio is reversed. Another difference between mammalian mitoribosomes and prokaryotic ribosomes is that the latter contain a 5S rRNA. Among different species, the proteins comprising the mitoribosome differ greatly in sequence, and sometimes in biochemical properties, which prevents easy recognition by sequence homology. This gene encodes a 39S subunit protein.

**Nanjing BYabs science technology Co.,Ltd**



Sequence analysis identified three transcript variants. Pseudogenes corresponding to this gene are found on chromosomes 6p, 10q, and Xp. [provided by RefSeq, Jul 2008],

**matters needing attention**

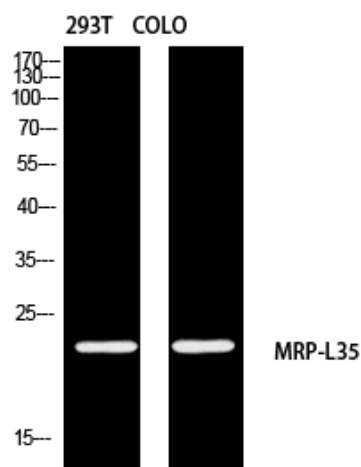
Avoid repeated freezing and thawing!

**Usage suggestions**

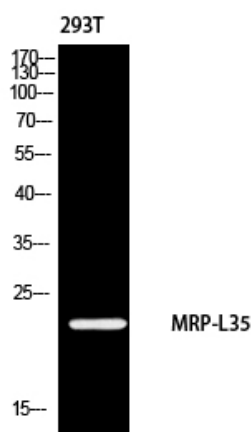
This product can be used in immunological reaction related experiments. For more information, please consult technical personnel.



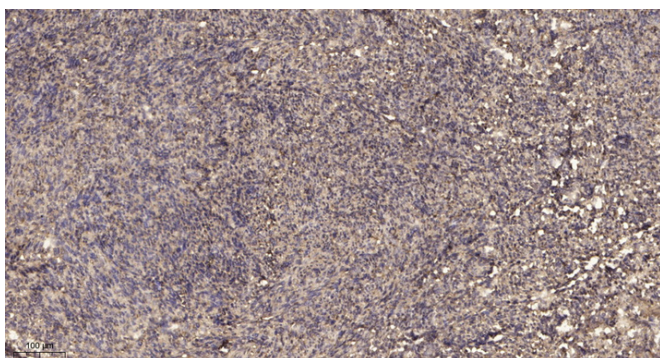
## Products Images



Western blot analysis of 293T COLO using MRP-L35 antibody. Antibody was diluted at 1:2000. Secondary antibody(catalog#:RS0002) was diluted at 1:20000



Western blot analysis of 293 using MRP-L35 antibody. Antibody was diluted at 1:2000. Secondary antibody(catalog#:RS0002) was diluted at 1:20000



Immunohistochemical analysis of paraffin-embedded human uterus. 1, Antibody was diluted at 1:200(4° overnight). 2, Tris-EDTA,pH9.0 was used for antigen retrieval. 3,Secondary antibody was diluted at 1:200(room temperature, 45min).