



GRP78 BiP Polyclonal Antibody

Catalog No	BYab-04351
Isotype	IgG
Reactivity	Human;Mouse;Rat;Fish
Applications	WB;IHC;IF;ELISA
Gene Name	HSPA5 GRP78
Protein Name	GRP78 BiP
Immunogen	Synthetic peptide from human protein at AA range: 505-570
Specificity	The antibody detects endogenous GRP78 BiP
Formulation	Liquid in PBS containing 50% glycerol, 0.5% BSA and 0.02% sodium azide.
Source	Polyclonal, Rabbit,IgG
Purification	The antibody was affinity-purified from rabbit antiserum by affinity-chromatography using epitope-specific immunogen.
Dilution	WB: 1/500 - 1/2000.IHC-p/f:1:50-300. ELISA 1:10000-20000. IF 1:50-200
Concentration	1 mg/ml
Purity	≥90%
Storage Stability	-20°C/1 year
Synonyms	78 kDa glucose-regulated protein (GRP-78) (Endoplasmic reticulum luminal Ca(2+)-binding protein grp78) (Heat shock 70 kDa protein 5) (Immunoglobulin heavy chain-binding protein) (BiP)
Observed Band	78kD
Cell Pathway	Endoplasmic reticulum lumen . Melanosome . Cytoplasm . Cell surface . Identified by mass spectrometry in melanosome fractions from stage I to stage IV (PubMed:12643545). Localizes to the cell surface of epithelial cells in response to high levels of free iron (PubMed:20484814, PubMed:24355926, PubMed:27159390). .
Tissue Specificity	Articular cartilage,Brain,Cajal-Retzius cell,Cervix carcino
Function	disease:Autoantigen in rheumatoid arthritis [MIM:180300].,function:Probably plays a role in facilitating the assembly of multimeric protein complexes inside the ER.,similarity:Belongs to the heat shock protein 70 family.,subcellular location:Identified by mass spectrometry in melanosome fractions from stage I to stage IV.,subunit:Interacts with DNAJC1 (via J domain) (By similarity). Component of an EIF2 complex at least composed of CUGBP1, CALR, CALR3,

Nanjing BYabs science technology Co.,Ltd



	EIF2S1, EIF2S2, HSP90B1 and HSPA5. Part a large chaperone multiprotein complex comprising CABP1, DNAJB11, HSP90B1, HSPA5, HYOU, PDIA2, PDIA4, PPIB, SDF2L1, UGT1A1 and very small amounts of ERP29, but not, or at very low levels, CALR nor CANX. Interacts with TMEM132A.,
Background	The protein encoded by this gene is a member of the heat shock protein 70 (HSP70) family. It is localized in the lumen of the endoplasmic reticulum (ER), and is involved in the folding and assembly of proteins in the ER. As this protein interacts with many ER proteins, it may play a key role in monitoring protein transport through the cell.[provided by RefSeq, Sep 2010],
matters needing attention	Avoid repeated freezing and thawing!
Usage suggestions	This product can be used in immunological reaction related experiments. For more information, please consult technical personnel.

Nanjing BYabscience technology Co.,Ltd

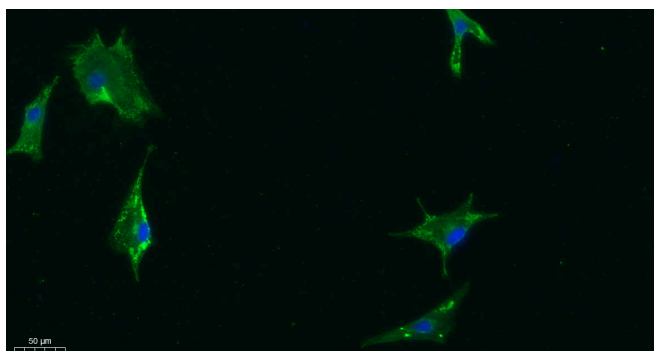
网址: www.njbybio.com

官方热线: 025-5229-8998

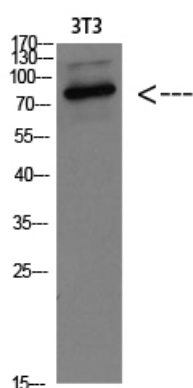
监督电话: 15950492658



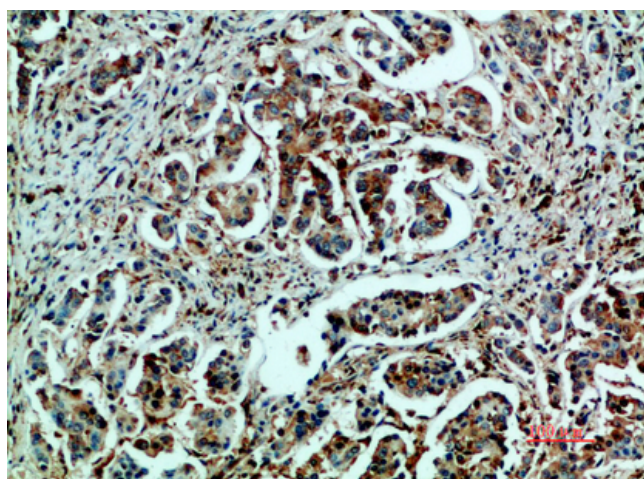
Products Images



Immunofluorescence analysis of A549. 1, primary Antibody was diluted at 1:200 (4°C overnight). 2, Goat Anti Rabbit IgG (H&L) - Alexa Fluor 488 Secondary antibody was diluted at 1:1000 (room temperature, 50 min). 3, Picture B: DAPI (blue) 10 min.



Western blot analysis of 3T3 Cell Lysate, antibody was diluted at 1:1000. Secondary antibody (catalog#: RS0002) was diluted at 1:20000.



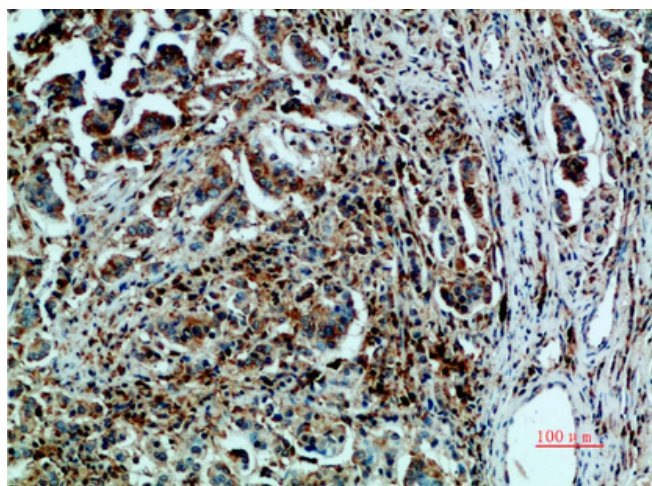
Immunohistochemical analysis of paraffin-embedded human breast cancer, antibody was diluted at 1:200.

Nanjing BYabs science technology Co., Ltd

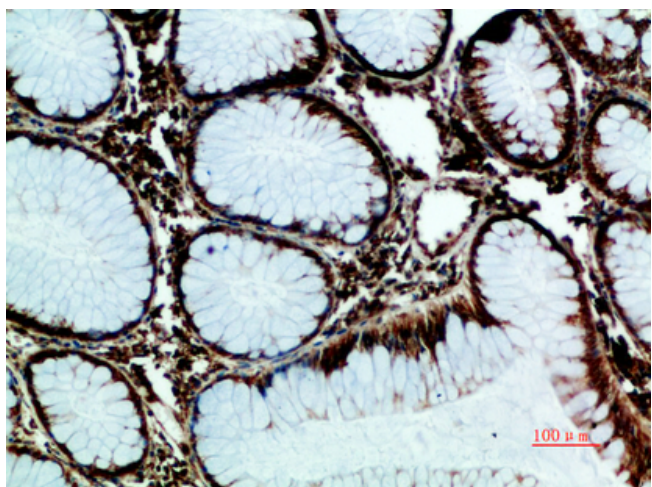
网址: www.njbybio.com

官方热线: 025-5229-8998

监督电话: 15950492658



Immunohistochemical analysis of paraffin-embedded human-breast-cancer, antibody was diluted at 1:200



Immunohistochemical analysis of paraffin-embedded human-colon-cancer, antibody was diluted at 1:200