



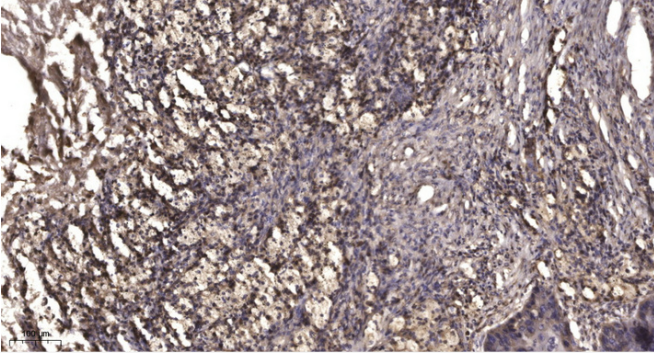
MMP20 (Cleaved-Tyr108) rabbit pAb

Catalog No	BYab-04391
Isotype	IgG
Reactivity	Human;Mouse;Rat
Applications	WB;IHC
Gene Name	MMP20
Protein Name	MMP20 (Cleaved-Tyr108)
Immunogen	Synthesized peptide derived from human MMP20 (Cleaved-Tyr108)
Specificity	This antibody detects endogenous levels of Human,Mouse,Rat MMP20 (Cleaved-Tyr108, protein was cleaved amino acid sequence between 107-108)
Formulation	Liquid in PBS containing 50% glycerol, 0.5% BSA and 0.02% sodium azide.
Source	Polyclonal, Rabbit,IgG
Purification	The antibody was affinity-purified from rabbit serum by affinity-chromatography using specific immunogen.
Dilution	WB 1:500-2000;IHC-p 1:50-300
Concentration	1 mg/ml
Purity	≥90%
Storage Stability	-20°C/1 year
Synonyms	Matrix metalloproteinase-20 (MMP-20;EC 3.4.24.-;Enamel metalloproteinase;Enamelysin)
Observed Band	42 53kD
Cell Pathway	Secreted, extracellular space, extracellular matrix .
Tissue Specificity	Expressed specifically in the enamel organ.
Function	
Background	
matters needing attention	Avoid repeated freezing and thawing!
Usage suggestions	This product can be used in immunological reaction related experiments. For more information, please consult technical personnel.

Nanjing BYabscience technology Co.,Ltd



Products Images



Immunohistochemical analysis of paraffin-embedded human Squamous cell carcinoma of lung. 1, Antibody was diluted at 1:200(4° overnight). 2, Tris-EDTA,pH9.0 was used for antigen retrieval. 3,Secondary antibody was diluted at 1:200(room temperature, 45min).