



MCFD2 (Cleaved-Glu27) rabbit pAb

Catalog No	BYab-04395
Isotype	IgG
Reactivity	Human;Mouse;Rat
Applications	WB;IHC
Gene Name	MCFD2 SDNSF
Protein Name	MCFD2 (Cleaved-Glu27)
Immunogen	Synthesized peptide derived from human MCFD2 (Cleaved-Glu27)
Specificity	This antibody detects endogenous levels of Human,Mouse,Rat MCFD2 (Cleaved-Glu27, protein was cleaved amino acid sequence between 26-27)
Formulation	Liquid in PBS containing 50% glycerol, 0.5% BSA and 0.02% sodium azide.
Source	Polyclonal, Rabbit,IgG
Purification	The antibody was affinity-purified from rabbit serum by affinity-chromatography using specific immunogen.
Dilution	WB 1:500-2000;IHC-p 1:50-300
Concentration	1 mg/ml
Purity	≥90%
Storage Stability	-20°C/1 year
Synonyms	Multiple coagulation factor deficiency protein 2 (Neural stem cell-derived neuronal survival protein)
Observed Band	14 16kD
Cell Pathway	Endoplasmic reticulum-Golgi intermediate compartment . Endoplasmic reticulum . Golgi apparatus .
Tissue Specificity	
Function	
Background	
matters needing attention	Avoid repeated freezing and thawing!

Nanjing BYabscience technology Co.,Ltd

网址: www.njbybio.com

官方热线: 025-5229-8998

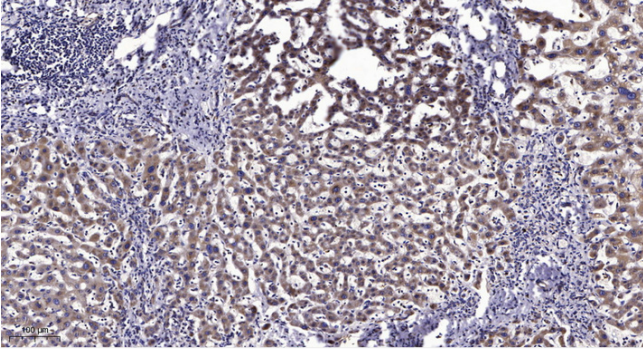
监督电话: 15950492658



Usage suggestions

This product can be used in immunological reaction related experiments. For more information, please consult technical personnel.

Products Images



Immunohistochemical analysis of paraffin-embedded human liver cancer. 1, Antibody was diluted at 1:200(4° overnight). 2, Tris-EDTA,pH9.0 was used for antigen retrieval. 3,Secondary antibody was diluted at 1:200(room temperature, 45min).