



CLC1A Polyclonal Antibody

Catalog No	BYab-06859
Isotype	IgG
Reactivity	Human;Mouse
Applications	WB;ELISA
Gene Name	CLEC1A CLEC1 UNQ569/PRO1131
Protein Name	C-type lectin domain family 1 member A (C-type lectin-like receptor 1) (CLEC-1)
Immunogen	Synthesized peptide derived from part region of human protein
Specificity	CLC1A Polyclonal Antibody detects endogenous levels of protein.
Formulation	Liquid in PBS containing 50% glycerol, and 0.02% sodium azide.
Source	Polyclonal, Rabbit,IgG
Purification	The antibody was affinity-purified from rabbit antiserum by affinity-chromatography using epitope-specific immunogen.
Dilution	WB 1:500-2000 ELISA 1:5000-20000
Concentration	1 mg/ml
Purity	≥90%
Storage Stability	-20°C/1 year
Synonyms	
Observed Band	30kD
Cell Pathway	Membrane ; Single-pass type II membrane protein .
Tissue Specificity	Expressed preferentially in dendritic cells.
Function	similarity:Contains 1 C-type lectin domain.,tissue specificity:Expressed preferentially in dendritic cells.,
Background	This gene encodes a member of the C-type lectin/C-type lectin-like domain (CTL/CTLD) superfamily. Members of this family share a common protein fold and have diverse functions, such as cell adhesion, cell-cell signaling, glycoprotein turnover, and roles in inflammation and immune response. The encoded protein may play a role in regulating dendritic cell function. This gene is closely linked to other CTL/CTLD superfamily members on chromosome 12p13 in the natural killer gene complex region. Alternative splicing results in multiple transcript variants. [provided by RefSeq, Jul 2014],

Nanjing BYabscience technology Co.,Ltd



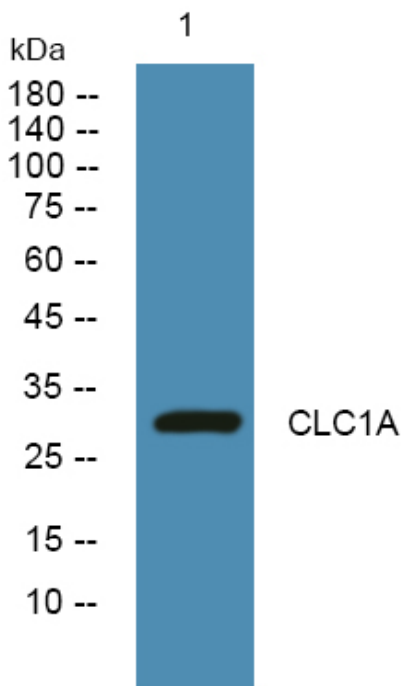
matters needing attention

Avoid repeated freezing and thawing!

Usage suggestions

This product can be used in immunological reaction related experiments. For more information, please consult technical personnel.

Products Images



Western blot analysis of lysates from KB cells, primary antibody was diluted at 1:1000, 4° over night