



# REL2 Polyclonal Antibody

<b>Catalog No</b>	BYab-06918
<b>Isotype</b>	IgG
<b>Reactivity</b>	Human;Rat;Mouse;
<b>Applications</b>	WB;ELISA
<b>Gene Name</b>	RLN2
<b>Protein Name</b>	Prorelaxin H2 [Cleaved into: Relaxin B chain; Relaxin A chain]
<b>Immunogen</b>	Synthesized peptide derived from part region of human protein
<b>Specificity</b>	REL2 Polyclonal Antibody detects endogenous levels of protein.
<b>Formulation</b>	Liquid in PBS containing 50% glycerol, and 0.02% sodium azide.
<b>Source</b>	Polyclonal, Rabbit,IgG
<b>Purification</b>	The antibody was affinity-purified from rabbit antiserum by affinity-chromatography using epitope-specific immunogen.
<b>Dilution</b>	WB 1:500-2000 ELISA 1:5000-20000
<b>Concentration</b>	1 mg/ml
<b>Purity</b>	≥90%
<b>Storage Stability</b>	-20°C/1 year
<b>Synonyms</b>	
<b>Observed Band</b>	20kD
<b>Cell Pathway</b>	Secreted.
<b>Tissue Specificity</b>	Isoform 1 is expressed in the ovary during pregnancy. Also expressed in placenta, decidua and prostate. Isoform 2 is relatively abundant in placenta. It is in much lower abundance in the prostate gland. Not detected in the ovary.
<b>Function</b>	function:Relaxin is an ovarian hormone that acts with estrogen to produce dilatation of the birth canal in many mammals. May be involved in remodeling of connective tissues during pregnancy, promoting growth of pubic ligaments and ripening of the cervix.,similarity:Belongs to the insulin family.,subunit:Heterodimer of a B chain and an A chain linked by two disulfide bonds.,tissue specificity:Isoform 1 expressed in the ovary during pregnancy. Also expressed in placenta, decidua and prostate. Isoform 2 relatively abundant in placenta, much lower abundance in the prostate gland. Not detected in the ovary.,
<b>Background</b>	relaxin 2(RLN2) Homo sapiens This gene encodes a member of the relaxin subfamily and insulin superfamily of peptide hormones. In humans there are three

**Nanjing BYabscience technology Co.,Ltd**



non-allelic relaxin genes. This gene encodes multiple protein isoforms, at least one of which undergoes proteolytic processing. This processing generates relaxin A and B chains that are linked by disulfide bonds to form the mature peptide hormone. This hormone plays a role in the male and female reproductive systems and was initially noted for its role in pregnancy. This protein also plays broader roles in the cardiovascular system, including in the regulation of blood pressure and control of heart rate, and data from animal models shows that this protein may have anti-fibrotic and cardioprotective effects. [provided by RefSeq, Jul 2016],

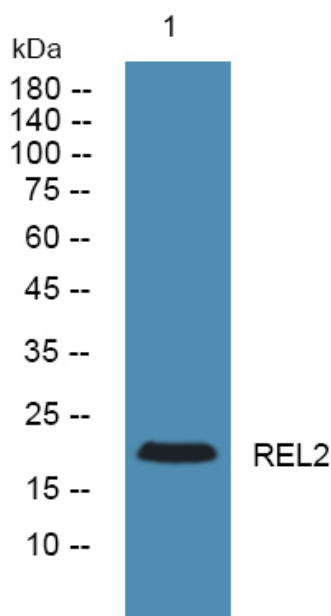
**matters needing attention**

Avoid repeated freezing and thawing!

**Usage suggestions**

This product can be used in immunological reaction related experiments. For more information, please consult technical personnel.

## Products Images



Western blot analysis of lysates from HCT116 cells, primary antibody was diluted at 1:1000, 4° over night