



TEFF1 Polyclonal Antibody

Catalog No	BYab-07024
Isotype	IgG
Reactivity	Human;Rat;Mouse
Applications	WB;ELISA
Gene Name	TMEFF1 C9orf2
Protein Name	Tomoregulin-1 (TR-1) (H7365) (Transmembrane protein with EGF-like and one follistatin-like domain)
Immunogen	Synthesized peptide derived from part region of human protein
Specificity	TEFF1 Polyclonal Antibody detects endogenous levels of protein.
Formulation	Liquid in PBS containing 50% glycerol, and 0.02% sodium azide.
Source	Polyclonal, Rabbit,IgG
Purification	The antibody was affinity-purified from rabbit antiserum by affinity-chromatography using epitope-specific immunogen.
Dilution	WB 1:500-2000 ELISA 1:5000-20000
Concentration	1 mg/ml
Purity	≥90%
Storage Stability	-20°C/1 year
Synonyms	
Observed Band	41kD
Cell Pathway	Cell membrane ; Single-pass type I membrane protein .
Tissue Specificity	Expressed predominantly in brain, and at lower levels in heart, placenta and skeletal muscle. Down-regulated in brain tumors as compared to control brain tissues.
Function	function:May inhibit NODAL and BMP signaling during neural patterning (By similarity). May be a tumor suppressor in brain cancers.,similarity:Belongs to the tomoregulin family.,similarity:Belongs to the UPF0439 family.,similarity:Contains 1 EGF-like domain.,similarity:Contains 2 Kazal-like domains.,subunit:May interact with ST14.,tissue specificity:Expressed in brain.,tissue specificity:Expressed predominantly in brain, and at lower levels in heart, placenta and skeletal muscle. Down-regulated in brain tumors as compared to control brain tissues.,
Background	function:May inhibit NODAL and BMP signaling during neural patterning (By similarity). May be a tumor suppressor in brain cancers.,similarity:Belongs to the tomoregulin family.,similarity:Belongs to the UPF0439 family.,similarity:Contains 1

Nanjing BYabscience technology Co.,Ltd



EGF-like domain.,similarity:Contains 2 Kazal-like domains.,subunit:May interact with ST14.,tissue specificity:Expressed in brain.,tissue specificity:Expressed predominantly in brain, and at lower levels in heart, placenta and skeletal muscle. Down-regulated in brain tumors as compared to control brain tissues.,

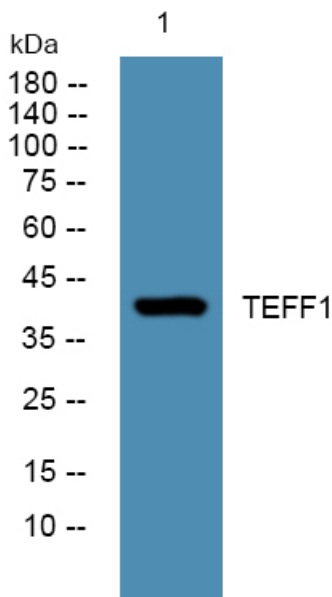
matters needing attention

Avoid repeated freezing and thawing!

Usage suggestions

This product can be used in immunological reaction related experiments. For more information, please consult technical personnel.

Products Images



Western blot analysis of lysates from U2OS cells, primary antibody was diluted at 1:1000, 4° over night