



ANX13 Polyclonal Antibody

Catalog No	BYab-07036
Isotype	IgG
Reactivity	Human;Mouse
Applications	WB;ELISA
Gene Name	ANXA13 ANX13
Protein Name	Annexin A13 (Annexin XIII) (Annexin-13) (Intestine-specific annexin) (ISA)
Immunogen	Synthesized peptide derived from part region of human protein
Specificity	ANX13 Polyclonal Antibody detects endogenous levels of protein.
Formulation	Liquid in PBS containing 50% glycerol, and 0.02% sodium azide.
Source	Polyclonal, Rabbit,IgG
Purification	The antibody was affinity-purified from rabbit antiserum by affinity-chromatography using epitope-specific immunogen.
Dilution	WB 1:500-2000 ELISA 1:5000-20000
Concentration	1 mg/ml
Purity	≥90%
Storage Stability	-20°C/1 year
Synonyms	
Observed Band	34kD
Cell Pathway	Apical cell membrane . Cell membrane ; Lipid-anchor . Cytoplasmic vesicle . Myristoylation anchors the protein to the membrane, but the protein displays also calcium-dependent, reversible binding to lipid membranes (PubMed:30610115). Associated with the plasma membrane of undifferentiated, proliferating crypt epithelial cells as well as differentiated villus enterocytes (PubMed:1530946). .
Tissue Specificity	Detected in epithelial cells in colon and jejunum (at protein level). Detected in epithelial cells in jejunum.
Function	domain:A pair of annexin repeats may form one binding site for calcium and phospholipid.,similarity:Belongs to the annexin family.,similarity:Contains 4 annexin repeats.,subcellular location:Associated with the plasma membrane of undifferentiated, proliferating crypt epithelial cells as well as differentiated villus enterocytes.,tissue specificity:Gut specific.,
Background	This gene encodes a member of the annexin family. Members of this calcium-dependent phospholipid-binding protein family play a role in the regulation of cellular growth and in signal transduction pathways. The specific

Nanjing BYabscience technology Co.,Ltd



function of this gene has not yet been determined; however, it is associated with the plasma membrane of undifferentiated, proliferating endothelial cells and differentiated villus enterocytes. Alternatively spliced transcript variants encoding different isoforms have been identified. [provided by RefSeq, Jul 2008],

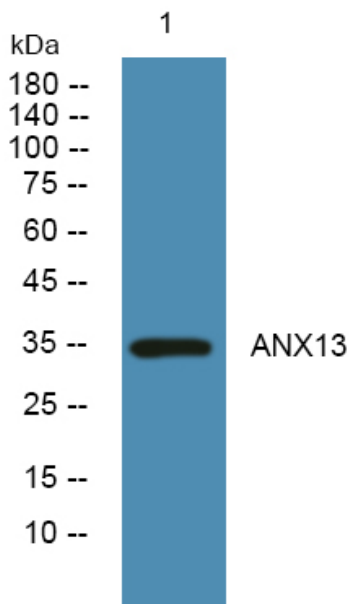
matters needing attention

Avoid repeated freezing and thawing!

Usage suggestions

This product can be used in immunological reaction related experiments. For more information, please consult technical personnel.

Products Images



Western blot analysis of lysates from SW480 cells, primary antibody was diluted at 1:1000, 4° over night