



LFTY1 Polyclonal Antibody

Catalog No	BYab-07038
Isotype	IgG
Reactivity	Human;Mouse
Applications	WB;ELISA
Gene Name	LEFTY1 LEFTB LEFTYB UNQ278/PRO317
Protein Name	Left-right determination factor 1 (Left-right determination factor B) (Protein lefty-1) (Protein lefty-B)
Immunogen	Synthesized peptide derived from part region of human protein AA range: 121-170
Specificity	LFTY1 Polyclonal Antibody detects endogenous levels of protein.
Formulation	Liquid in PBS containing 50% glycerol, and 0.02% sodium azide.
Source	Polyclonal, Rabbit,IgG
Purification	The antibody was affinity-purified from rabbit antiserum by affinity-chromatography using epitope-specific immunogen.
Dilution	WB 1:500-2000 ELISA 1:5000-20000
Concentration	1 mg/ml
Purity	≥90%
Storage Stability	-20°C/1 year
Synonyms	
Observed Band	40kD
Cell Pathway	Secreted.
Tissue Specificity	Colon,Pancreas,Spleen,Teratocarcinoma,
Function	function:Required for left-right axis determination as a regulator of LEFTY2 and NODAL.,PTM:The processing of the protein may also occur at the second R-X-X-R site located at AA 132-135. Processing appears to be regulated in a cell-type specific manner.,similarity:Belongs to the TGF-beta family.,
Background	This gene encodes a secreted ligand of the TGF-beta (transforming growth factor-beta) superfamily of proteins. Ligands of this family bind various TGF-beta receptors leading to recruitment and activation of SMAD family transcription factors that regulate gene expression. The encoded preproprotein is proteolytically processed to generate the mature protein, which plays a role in left-right asymmetry determination of organ systems during development. This

Nanjing BYabscience technology Co.,Ltd



gene is closely linked to both a related family member and a related pseudogene.
[provided by RefSeq, Aug 2016],

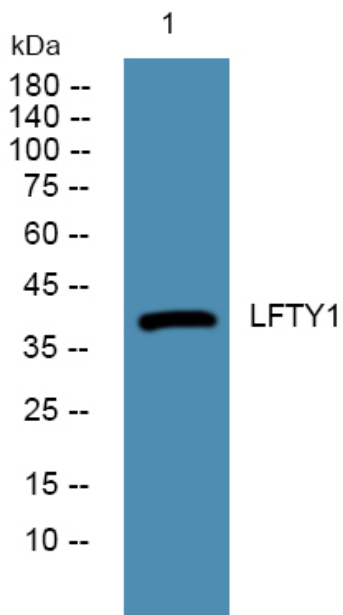
matters needing attention

Avoid repeated freezing and thawing!

Usage suggestions

This product can be used in immunological reaction related experiments. For more information, please consult technical personnel.

Products Images



Western blot analysis of lysates from U2OS cells,
primary antibody was diluted at 1:1000, 4°over night