



# PRS27 Polyclonal Antibody

<b>Catalog No</b>	BYab-07150
<b>Isotype</b>	IgG
<b>Reactivity</b>	Human;Rat;Mouse
<b>Applications</b>	WB;ELISA
<b>Gene Name</b>	PRSS27 MPN UNQ1884/PRO4327
<b>Protein Name</b>	Serine protease 27 (EC 3.4.21.-) (Marapsin) (Pancreasin)
<b>Immunogen</b>	Synthesized peptide derived from human protein . at AA range: 30-110
<b>Specificity</b>	PRS27 Polyclonal Antibody detects endogenous levels of protein.
<b>Formulation</b>	Liquid in PBS containing 50% glycerol, and 0.02% sodium azide.
<b>Source</b>	Polyclonal, Rabbit,IgG
<b>Purification</b>	The antibody was affinity-purified from rabbit antiserum by affinity-chromatography using epitope-specific immunogen.
<b>Dilution</b>	WB 1:500-2000 ELISA 1:5000-20000
<b>Concentration</b>	1 mg/ml
<b>Purity</b>	≥90%
<b>Storage Stability</b>	-20°C/1 year
<b>Synonyms</b>	
<b>Observed Band</b>	31kD
<b>Cell Pathway</b>	Secreted.
<b>Tissue Specificity</b>	Expressed predominantly in the pancreas.
<b>Function</b>	PTM:N-glycosylated.,similarity:Belongs to the peptidase S1 family.,similarity:Contains 1 peptidase S1 domain.,tissue specificity:Expressed predominantly in the pancreas.,
<b>Background</b>	This gene is located within a large protease gene cluster on chromosome 16. It belongs to the group-1 subfamily of serine proteases. The encoded protein is a secreted tryptic serine protease and is expressed mainly in the pancreas. Alternative splicing results in multiple transcript variants. [provided by RefSeq, Jan 2016],
<b>matters needing attention</b>	Avoid repeated freezing and thawing!

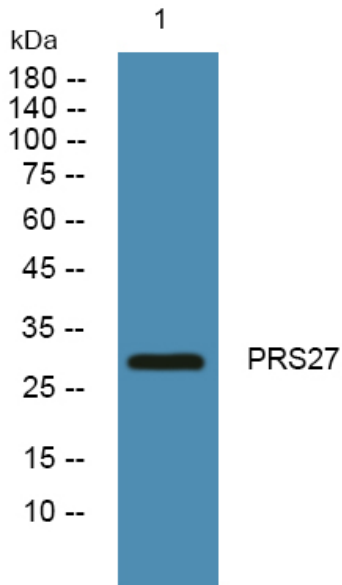
**Nanjing BYabscience technology Co.,Ltd**



### Usage suggestions

This product can be used in immunological reaction related experiments. For more information, please consult technical personnel.

### Products Images



Western blot analysis of lysates from K562 cells, primary antibody was diluted at 1:1000, 4° over night