



FCRLB Polyclonal Antibody

Catalog No	BYab-07238
Isotype	IgG
Reactivity	Human;Mouse
Applications	WB;ELISA
Gene Name	FCRLB FCRL2 FCRLM2 FCRY FREB2
Protein Name	Fc receptor-like B (Fc receptor homolog expressed in B-cells protein 2) (FREB-2) (Fc receptor-like and mucin-like protein 2) (Fc receptor-like protein 2) (Fc receptor-related protein Y) (FCRY)
Immunogen	Synthesized peptide derived from human protein . at AA range: 340-420
Specificity	FCRLB Polyclonal Antibody detects endogenous levels of protein.
Formulation	Liquid in PBS containing 50% glycerol, and 0.02% sodium azide.
Source	Polyclonal, Rabbit,IgG
Purification	The antibody was affinity-purified from rabbit antiserum by affinity-chromatography using epitope-specific immunogen.
Dilution	WB 1:500-2000 ELISA 1:5000-20000
Concentration	1 mg/ml
Purity	≥90%
Storage Stability	-20°C/1 year
Synonyms	
Observed Band	46kD
Cell Pathway	Cytoplasm . Endoplasmic reticulum . Seems not to be secreted. .
Tissue Specificity	Expressed at low levels. Expressed in B-lymphocytes. Detected in tonsil, lung, kidney, spleen and placenta. Expressed by a small subset of germinal center B-cells in tonsils and by melanocytes (at protein level).
Function	alternative products:Additional isoforms seem to exist,similarity:Contains 2 Ig-like C2-type (immunoglobulin-like) domains.,subcellular location:Seems not to be secreted.,tissue specificity:Expressed at low levels. Expressed in B-lymphocytes. Detected in tonsil, lung, kidney, spleen and placenta. Expressed by a small subset of germinal center B cells in tonsils and by melanocytes (at protein level).,
Background	FCRL2 belongs to the Fc receptor family. Fc receptors are involved in phagocytosis, antibody-dependent cell cytotoxicity, immediate hypersensitivity, and transcytosis of immunoglobulins via their ability to bind immunoglobulin (Ig) constant regions (Chikaev et al., 2005 [PubMed 15676285]).[supplied by OMIM,

Nanjing BYabs science technology Co.,Ltd



Mar 2008],

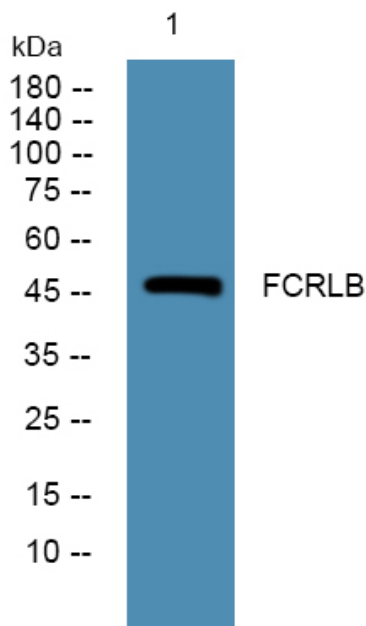
matters needing attention

Avoid repeated freezing and thawing!

Usage suggestions

This product can be used in immunological reaction related experiments. For more information, please consult technical personnel.

Products Images



Western blot analysis of lysates from DU145 cells, primary antibody was diluted at 1:1000, 4°over night