



C5ARL Polyclonal Antibody

Catalog No	BYab-07387
Isotype	IgG
Reactivity	Human;Rat;Mouse;
Applications	WB;ELISA
Gene Name	GPR77 C5L2
Protein Name	C5a anaphylatoxin chemotactic receptor C5L2 (G-protein coupled receptor 77)
Immunogen	Synthesized peptide derived from human protein . at AA range: 270-350
Specificity	C5ARL Polyclonal Antibody detects endogenous levels of protein.
Formulation	Liquid in PBS containing 50% glycerol, and 0.02% sodium azide.
Source	Polyclonal, Rabbit,IgG
Purification	The antibody was affinity-purified from rabbit antiserum by affinity-chromatography using epitope-specific immunogen.
Dilution	WB 1:500-2000 ELISA 1:5000-20000
Concentration	1 mg/ml
Purity	≥90%
Storage Stability	-20°C/1 year
Synonyms	
Observed Band	37kD
Cell Pathway	Cell membrane ; Multi-pass membrane protein .
Tissue Specificity	Frontal cortex, hippocampus, hypothalamus, pons and liver.
Function	function:Receptor for the chemotactic and inflammatory peptide anaphylatoxin C5a, C4a and C3a and their desarginated derivatives. Couples weakly to Gi-mediated signaling pathways.,similarity:Belongs to the G-protein coupled receptor 1 family.,tissue specificity:Frontal cortex, hippocampus, hypothalamus, pons and liver.,
Background	This gene encodes a G-protein coupled receptor 1 family member involved in the complement system of the innate immune response. Unlike classical G-protein coupled receptors, the encoded protein does not associate with intracellular G-proteins. It may instead modulate signal transduction through the beta-arrestin pathway, and may alternatively act as a decoy receptor. This gene may be involved in coronary artery disease and in the pathogenesis of sepsis. Alternative

Nanjing BYabscience technology Co.,Ltd



splicing results in multiple transcript variants. [provided by RefSeq, Nov 2012],

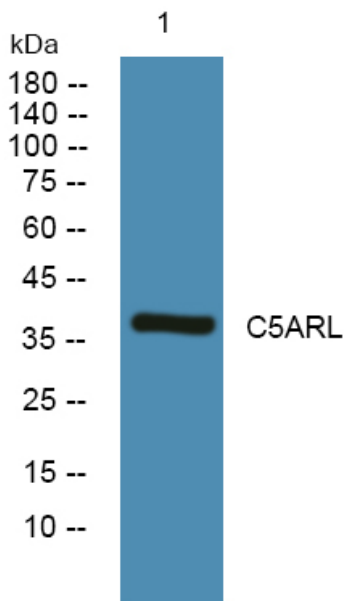
matters needing attention

Avoid repeated freezing and thawing!

Usage suggestions

This product can be used in immunological reaction related experiments. For more information, please consult technical personnel.

Products Images



Western blot analysis of lysates from Jarkat cells, primary antibody was diluted at 1:1000, 4°over night