



GP183 Polyclonal Antibody

Catalog No	BYab-07393
Isotype	IgG
Reactivity	Human;Rat;Mouse;
Applications	WB;ELISA
Gene Name	GPR183 EBI2
Protein Name	G-protein coupled receptor 183 (Epstein-Barr virus-induced G-protein coupled receptor 2) (EBI2) (EBV-induced G-protein coupled receptor 2)
Immunogen	Synthesized peptide derived from human protein . at AA range: 110-190
Specificity	GP183 Polyclonal Antibody detects endogenous levels of protein.
Formulation	Liquid in PBS containing 50% glycerol, and 0.02% sodium azide.
Source	Polyclonal, Rabbit,IgG
Purification	The antibody was affinity-purified from rabbit antiserum by affinity-chromatography using epitope-specific immunogen.
Dilution	WB 1:500-2000 ELISA 1:5000-20000
Concentration	1 mg/ml
Purity	≥90%
Storage Stability	-20°C/1 year
Synonyms	
Observed Band	39kD
Cell Pathway	Cell membrane ; Multi-pass membrane protein .
Tissue Specificity	Expressed abundantly in lymphoid tissues such as spleen and lymph node, and in B- and T-lymphocytes (PubMed:16540462, PubMed:8383238). Also highly expressed in lung, heart and gastrointestinal tract, and weakly expressed in the urogenital system and brain (PubMed:16540462, PubMed:8383238). Expressed in astrocytes (PubMed:25297897).
Function	caution:It is uncertain whether Met-1 or Met-5 is the initiator.,function:Orphan receptor. Probable mediator of EBV effects on B lymphocytes or of normal lymphocyte functions. Signals constitutively through G(i)-alpha, but not G(s)-alpha or G(q)-alpha.,induction:By EBV.,similarity:Belongs to the G-protein coupled receptor 1 family.,tissue specificity:Expressed abundantly in lymphoid tissues such as spleen and lymph node, and in B- and T-lymphocytes. Also highly expressed in lung, heart and gastrointestinal tract, and weakly expressed in the urogenital system and brain.,

Nanjing BYabscience technology Co.,Ltd



Background

This gene was identified by the up-regulation of its expression upon Epstein-Barr virus infection of primary B lymphocytes. This gene is predicted to encode a G protein-coupled receptor that is most closely related to the thrombin receptor. Expression of this gene was detected in B-lymphocyte cell lines and lymphoid tissues but not in T-lymphocyte cell lines or peripheral blood T lymphocytes. The function of this gene is unknown. [provided by RefSeq, Jul 2008],

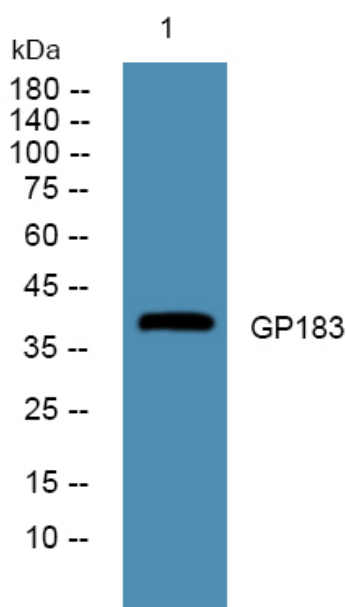
matters needing attention

Avoid repeated freezing and thawing!

Usage suggestions

This product can be used in immunological reaction related experiments. For more information, please consult technical personnel.

Products Images



Western blot analysis of lysates from DU145 cells, primary antibody was diluted at 1:1000, 4° over night