



MRGRD Polyclonal Antibody

Catalog No	BYab-07416
Isotype	IgG
Reactivity	Human;Rat;Mouse;
Applications	WB;ELISA
Gene Name	MRGPRD MRGD
Protein Name	Mas-related G-protein coupled receptor member D (Beta-alanine receptor) (G-protein coupled receptor TGR7)
Immunogen	Synthesized peptide derived from part region of human protein
Specificity	MRGRD Polyclonal Antibody detects endogenous levels of protein.
Formulation	Liquid in PBS containing 50% glycerol, and 0.02% sodium azide.
Source	Polyclonal, Rabbit,IgG
Purification	The antibody was affinity-purified from rabbit antiserum by affinity-chromatography using epitope-specific immunogen.
Dilution	WB 1:500-2000 ELISA 1:5000-20000
Concentration	1 mg/ml
Purity	≥90%
Storage Stability	-20°C/1 year
Synonyms	
Observed Band	35kD
Cell Pathway	Cell membrane ; Multi-pass membrane protein . Localized at the plasma membrane but internalized into the cytoplasm after treatment with beta-alanine.
Tissue Specificity	Liver,
Function	function:May regulate nociceptor function and/or development, including the sensation or modulation of pain. Functions as a specific membrane receptor for beta-alanine. Beta-alanine at micromolar doses specifically evoked Ca(2+) influx in cells expressing the receptor. Beta-alanine decreases forskolin-stimulated cAMP production in cells expressing the receptor, suggesting that the receptor couples with G-protein G(q) and G(i).,similarity:Belongs to the G-protein coupled receptor 1 family. Mas subfamily.,subcellular location:Localized at the plasma membrane but internalized into the cytoplasm after treatment with beta-alanine.,
Background	function:May regulate nociceptor function and/or development, including the sensation or modulation of pain. Functions as a specific membrane receptor for beta-alanine. Beta-alanine at micromolar doses specifically evoked Ca(2+) influx

Nanjing BYabscience technology Co.,Ltd



in cells expressing the receptor. Beta-alanine decreases forskolin-stimulated cAMP production in cells expressing the receptor, suggesting that the receptor couples with G-protein G(q) and G(i).,similarity:Belongs to the G-protein coupled receptor 1 family. Mas subfamily.,subcellular location:Localized at the plasma membrane but internalized into the cytoplasm after treatment with beta-alanine.,

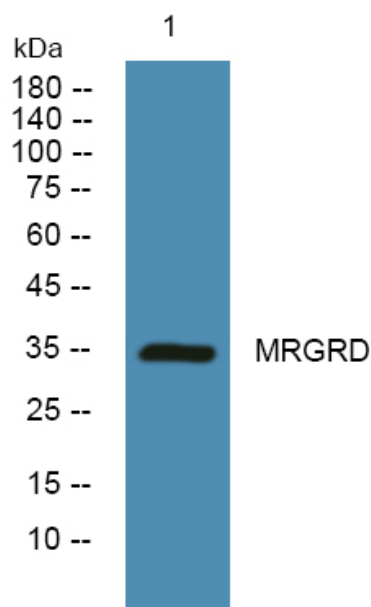
matters needing attention

Avoid repeated freezing and thawing!

Usage suggestions

This product can be used in immunological reaction related experiments. For more information, please consult technical personnel.

Products Images



Western blot analysis of lysates from SW480 cells, primary antibody was diluted at 1:1000, 4° over night