



ANF Polyclonal Antibody

Catalog No	BYab-07733
Isotype	IgG
Reactivity	Human;Mouse;Rat
Applications	WB;ELISA
Gene Name	NPPA ANP PND
Protein Name	Natriuretic peptides A (CDD-ANF) (Prepronatriodilatin) [Cleaved into: Cardiodilatin-related peptide (CDP); Atrial natriuretic factor (ANF) (Atrial natriuretic peptide) (ANP)]
Immunogen	Synthesized peptide derived from part region of human protein
Specificity	ANF Polyclonal Antibody detects endogenous levels of protein.
Formulation	Liquid in PBS containing 50% glycerol, and 0.02% sodium azide.
Source	Polyclonal, Rabbit,IgG
Purification	The antibody was affinity-purified from rabbit antiserum by affinity-chromatography using epitope-specific immunogen.
Dilution	WB 1:500-2000 ELISA 1:5000-20000
Concentration	1 mg/ml
Purity	≥90%
Storage Stability	-20°C/1 year
Synonyms	
Observed Band	16kD
Cell Pathway	[Long-acting natriuretic peptide]: Secreted . Detected in blood. .; [Vessel dilator]: Secreted . Detected in blood. .; [Kaliuretic peptide]: Secreted . Detected in blood. .; [Urodilatin]: Secreted . Detected in urine (PubMed:2972874, PubMed:9794555, PubMed:8351194, PubMed:8779891). Not detected in blood (PubMed:8351194). Increased electrolytes, osmolality and intracellular cAMP levels increase peptide secretion/excretion (PubMed:9893117, PubMed:8853410, PubMed:8351194, PubMed:8779891). .; [Atrial natriuretic peptide]: Secreted . Perikaryon . Cell projection . Detected in blood (PubMed:8351194, PubMed:8779891, PubMed:7955907, PubMed:8653797, PubMed:15741263, PubMed:18835931, PubMed:2532366, PubMed:7984506). Detected in urine in one study (PubMed:8351194). However, in another study, was not
Tissue Specificity	[Urodilatin]: Detected in the kidney distal tubular cells (at protein level) (PubMed:9794555, PubMed:8384600). Present in urine (at protein level) (PubMed:2972874, PubMed:9794555, PubMed:8351194, PubMed:8779891). .; [Atrial natriuretic peptide]: Detected in atrial and ventricular plasma samples, and

Nanjing BYabscience technology Co.,Ltd



	in adipocytes (at protein level) (PubMed:22291141, PubMed:21672517). Detected in urine in one study (PubMed:8351194). However, was not detected in urine in another study (PubMed:7984506). In the brain, predominantly expressed in the gray matter with very weak expression in the white matter (at protein level) (PubMed:30534047). Localizes to astrocyte-like structures throughout the white matter, and in the cerebral vessels detected in the leptomenigeal and parenchymal vessels, and endothelium and
Function	disease:Defects in NPPA are the cause of atrial fibrillation familial type 6 (ATFB6) [MIM:612201]. Atrial fibrillation is a common disorder of cardiac rhythm that is hereditary in a small subgroup of patients. It is characterized by disorganized atrial electrical activity, progressive deterioration of atrial electromechanical function and ineffective pumping of blood into the ventricles. It can be associated with palpitations, syncope, thromboembolic stroke, and congestive heart failure.,function:A potent vasoactive substance which is thought to play a key role in cardiovascular homeostasis. Has a cGMP-stimulating activity.,online information:Atrial natriuretic peptide entry,polymorphism:There are two different prepronatriodilatin alleles. One codes for 2 Arg residues at the C-terminus that are cleaved to form the mature peptide, while the other ends in a termination codon immediately af
Background	The protein encoded by this gene belongs to the natriuretic peptide family. Natriuretic peptides are implicated in the control of extracellular fluid volume and electrolyte homeostasis. This protein is synthesized as a large precursor (containing a signal peptide), which is processed to release a peptide from the N-terminus with similarity to vasoactive peptide, cardiodilatin, and another peptide from the C-terminus with natriuretic-diuretic activity. Mutations in this gene have been associated with atrial fibrillation familial type 6. This gene is located adjacent to another member of the natriuretic family of peptides on chromosome 1. [provided by RefSeq, Oct 2015],
matters needing attention	Avoid repeated freezing and thawing!
Usage suggestions	This product can be used in immunological reaction related experiments. For more information, please consult technical personnel.

Nanjing BYabscience technology Co.,Ltd

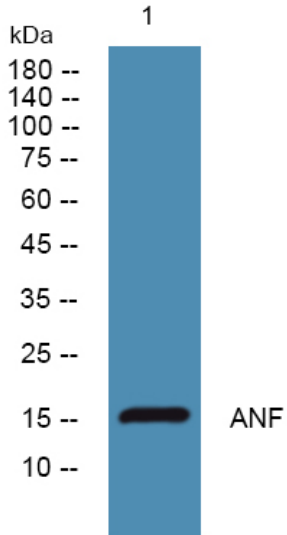
网址: www.njbybio.com

官方热线: 025-5229-8998

监督电话: 15950492658



Products Images



Western blot analysis of lysates from U2OS cells,
primary antibody was diluted at 1:1000, 4° over night